

## Start Here

**WARNING**

**WARNING** indicates a potentially hazardous situation which, if not avoided, could result in death or serious injuries.

**CAUTION**

**CAUTION** indicates a potentially hazardous situation which, if not avoided, may result in minor or moderate injuries.

(HL-4150CDN) In USA:  
Please go to the Brother Solutions Center at <http://solutions.brother.com/> and click Manuals on your model page to download the other manuals.

## 1 Unpack the machine and check the components

**Note**

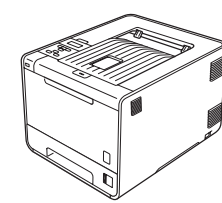
- The components included in the box may differ depending on your country.
- We recommend that you save the original packaging.
- If for any reason you must ship your machine, carefully repack the machine in the original packaging to avoid any damage during transit. The machine should be adequately insured with the carrier. How to repack the machine, see *Shipment of the machine in the User's Guide*.
- The interface cable is not a standard accessory. Buy the appropriate interface cable for the interface you want to use (USB or Network).

**USB cable**

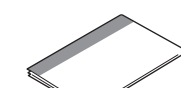
It is recommended to use a USB 2.0 (Type A/B) interface cable that is no longer than 2 meters (6 feet).

**Network cable**

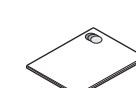
Use a straight-through Category5 (or greater) twisted-pair cable for 10BASE-T or 100BASE-TX Fast Ethernet Network.



**Drum Unit**  
(pre-installed)



**Quick Setup Guide**



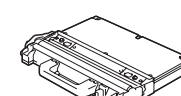
**Safety and Legal Booklet**



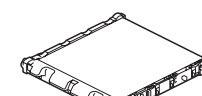
**AC Power Cord**



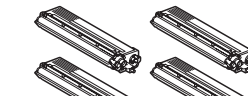
**Documentation/Installation CD-ROM(s)**



**Waste Toner Box**  
(pre-installed)



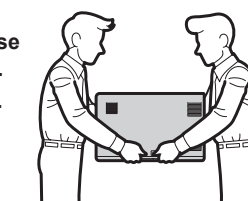
**Belt Unit**  
(pre-installed)



**Starter Toner Cartridges**  
(pre-installed)  
(Black, Cyan, Magenta and Yellow)

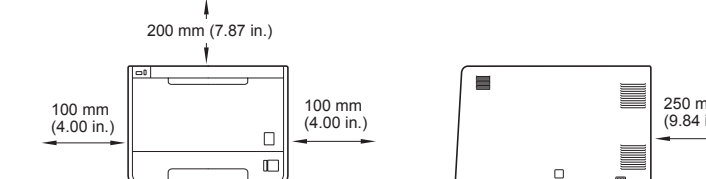
**WARNING**

- Plastic bags are used in the packaging of your machine. Plastic bags are not toys. To avoid danger of suffocation, please keep these bags away from babies and children and dispose of them properly.
- This machine is heavy and weighs approximately 21.0 kg (46.3 lb.). To prevent possible injuries at least two people should lift the machine. Be careful not to pinch your fingers when you put the machine down.
- If you use a Lower Tray, carry it separately from your machine.



**Note**

Keep a minimum gap around the machine as shown in the illustration.

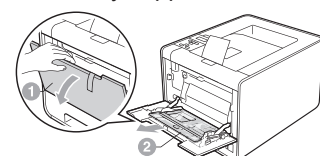


## 2 Remove the packing material from the machine

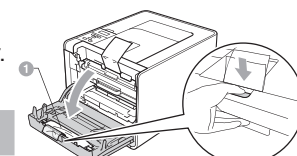
**IMPORTANT**

**DO NOT plug in the AC power cord yet.**

- Remove the packing tape from the outside of the machine.
- Open the MP tray 1, and remove the plastic sheet 2 from the MP tray support, then close the MP tray.



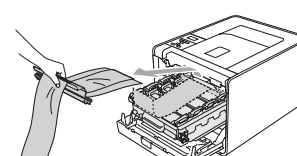
- Press the front cover release button and open the front cover. Remove the silica gel pack 1.



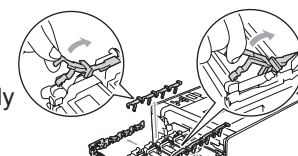
**CAUTION**

**DO NOT eat Silica Pack.** Discard immediately.

- Hold the green handle of the drum unit and pull it out until it stops.
- Hold the orange packing material, and remove it.

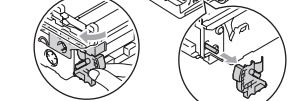


- Remove the 4 orange packing pieces.



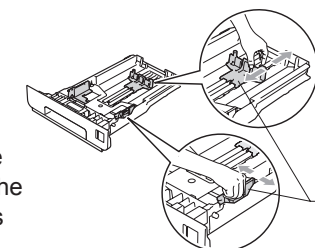
- Push the drum unit firmly back into the machine.

- Close the front cover of the machine.

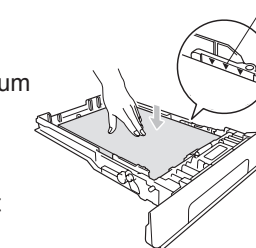


## 3 Load paper in the paper tray

- Pull the paper tray completely out of the machine.
- While pressing the green paper-guide release lever 1, slide the paper guides to fit the paper size you are loading in the tray. Make sure that the guides are firmly in the slots.
- Fan the stack of paper well to avoid paper jams and misfeeds.



- Put paper in the tray and make sure:
  - The paper is below the maximum paper mark (▼▼▼) 1. Over filling the paper tray will cause paper jams.
  - The side to be printed on must be face down.
  - The paper guides touch the sides of the paper so it will feed properly.



- Put the paper tray firmly back in the machine. Make sure that it is completely inserted into the machine.

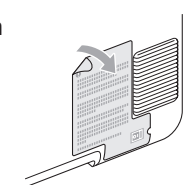
For more information about recommended paper, see *Recommended paper and print media in the User's Guide*.

## 4 Print a test page

**IMPORTANT**

**DO NOT connect the Interface cable yet.**

- Connect the AC power cord to the machine and then connect it to an AC power outlet.
- Remove the label covering the machine's power switch, and then switch the machine on.



- After the machine has finished warming up, the LCD will show Ready.

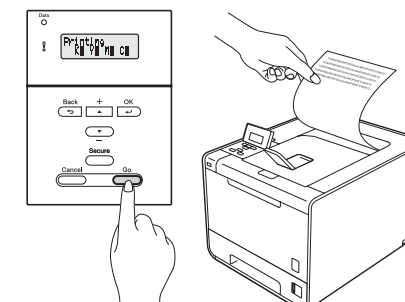
**Note**

You can adjust the angle of the display by lifting it.

- Press Go. The machine will print a test page. Check that the test page has printed correctly.

**Note**

This function will not be available after the first print job you send from your computer.



## 5 Set your language

- Press + or - to choose General Setup. Press OK.
- Press OK to choose Local Language.
- Press + or - to choose your language. Press OK.

**Now go to**  
Turn the sheet over to install the printer driver.

### Options

The machine has the following optional accessories. You can expand the capabilities of the machine by adding these items. For more information about the optional Lower Tray Unit and compatible SO-DIMM Memory, visit us at <http://solutions.brother.com/>.

For installing the SO-DIMM Memory, see *Installing extra memory in the User's Guide*.

Lower Tray Unit (LT-300CL)	SO-DIMM Memory
Second lower paper tray unit can hold up to 500 sheets of paper. When the tray is installed, the machine expands total input capacity up to 800 sheets.	You can increase the memory by installing one SO-DIMM (Small Outline Dual In-line Memory Module).

### Consumables

When the time comes to replace consumable items, an error will be indicated by the LCD on the control panel. For more information about the consumables for your machine, visit us at <http://www.brother.com/original/> or contact your local Brother reseller.

Toner cartridges	Drum unit
Belt Unit (BU-300CL)	Waste Toner Box (WT-300CL)

For replacing the consumable items, see *Replacing consumable items in the User's Guide*.

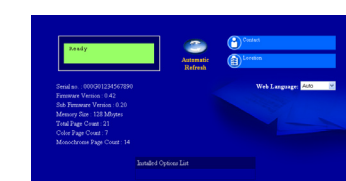
### For Network Users

#### Web Based Management (web browser)

The Brother print server is equipped with a web server that allows you to monitor its status or change some of its configuration settings, using HTTP (Hyper Text Transfer Protocol).

**Note**

- The login name for the Administrator is 'admin' (case sensitive) and the default password is 'access'.
- We recommend Microsoft® Internet Explorer® 6.0 (or greater) or Firefox 3.0 (or greater) for Windows® and Safari 3.0 (or greater) for Macintosh. Please also make sure that JavaScript and Cookies are always enabled in whichever browser you use. To use a web browser, you will need to know the IP Address of the print server. The IP Address of the print server is listed on the Print Setting Page.



- Type `http://machine_ip_address/` into your browser (where `machine_ip_address` is the IP Address or the print server name).
  - For example: `http://192.168.1.2/`

See *Web Based Management in the Network User's Guide*.

#### Reset the network settings to the factory default

To reset all network settings of the print server to its factory default, follow the steps below.

- Press + or - to choose Network. Press OK.
- Press + or - to choose Network Reset. Press OK.
- Press + to choose Reset.
- Press + to choose Yes for reboot. The machine will re-start.



## For Windows®

### Before you install

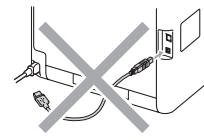
Make sure that your computer is ON and you are logged on with Administrator rights.

- IMPORTANT**
- If there are any programs running, close them.
  - The screens may differ depending on your operating system.

- Note**
- For Windows Vista® and Windows® 7 users, when the **User Account Control** screen appears, click **Allow** or **Yes**.
  - If you want to install the PS driver (BR-Script3 printer driver), choose **Custom Install** and then follow the on-screen instructions.
  - Depending on your security settings, a Windows Security or antivirus software window may appear when using the machine or its software. Please allow or permit the window to continue.
  - **XML Paper Specification Printer Driver**  
The XML Paper Specification Printer Driver is the most suitable driver when printing from the applications that use the XML Paper Specification documents. Please download the latest driver by accessing the Brother Solutions Center at <http://solutions.brother.com/>.

### 6 For USB Interface Cable Users

- a.** Turn off the machine and make sure the USB interface cable is **NOT** connected to the machine, and then begin installing the printer driver. If you have already connected the cable, disconnect it.



#### Install the printer driver

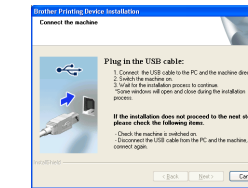
- b.** Put the installation CD-ROM into your CD-ROM drive. If prompted, select your model and language.

**Note**  
If the Brother screen does not appear automatically, go to **My Computer (Computer)**, double-click the CD-ROM icon, and then double-click **start.exe**.

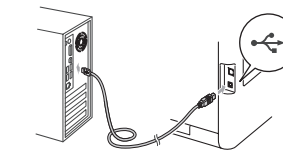
- c.** Click **Install Printer Driver**, and click **Yes** if you accept the license agreement.



- d.** Follow the on-screen instructions until this screen appears.



- e.** Connect the USB cable to the USB connector marked with the symbol, and then connect the cable to the computer.



- f.** Turn the machine on, and follow the on-screen instructions to complete setup.

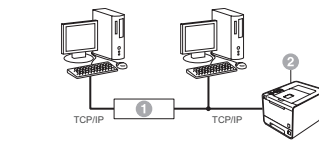
**Finish**

The installation is now complete.

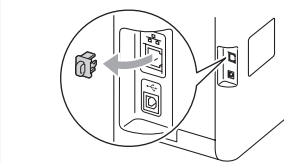
### 6 For Wired Network Interface Cable Users

- Note**  
If you are going to connect the machine to your network, we recommend that you contact your system administrator prior to installation.

#### For Peer-to-Peer network users



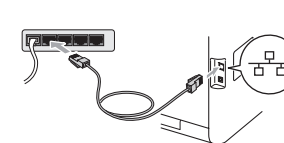
- 1 Router
- 2 Machine



- a.** Remove the protective cap from the LAN connector.

- b.** Connect the network interface cable to the LAN connector marked with a symbol and then connect it to a free port on your hub.

- c.** Make sure the machine power switch is on.



#### Install the printer driver

- d.** Put the installation CD-ROM into your CD-ROM drive. If prompted, select your model and language.

**Note**  
If the Brother screen does not appear automatically, go to **My Computer (Computer)**, double-click the CD-ROM icon, and then double-click **start.exe**.

- e.** Click **Install Printer Driver**, and click **Yes** if you accept the license agreement.



- f.** Follow the on-screen instructions to complete setup.

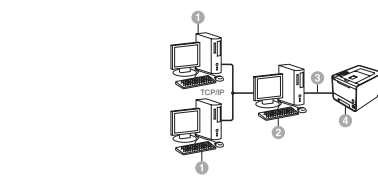
**Note**  
You can find your machine's IP Address and the node name by printing out the **Printer Settings Page**. See *Print the Printer Settings Page* below.

**Finish**

The installation is now complete.

**Note**  
If you use a specified IP Address for the machine, you must set the Boot Method to Static by using the control panel. For more information, see *Network menu* in the *Network User's Guide*.

#### For shared network users



- 1 Client computer
- 2 Also known as "Server" or "Print server"
- 3 TCP/IP or USB
- 4 Machine

#### Install the printer driver

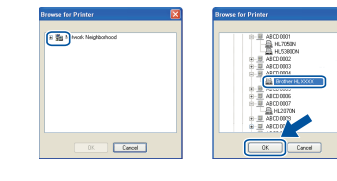
- a.** Put the installation CD-ROM into your CD-ROM drive. If prompted, select your model and language.

**Note**  
If the Brother screen does not appear automatically, go to **My Computer (Computer)**, double-click the CD-ROM icon, and then double-click **start.exe**.

- b.** Click **Install Printer Driver**, and click **Yes** if you accept the license agreement.



- c.** Follow the on-screen instructions until this screen appears. Choose your machine's queue, and then click **OK**.



**Note**  
Contact your administrator if you do not know the location or the name of the machine queue on the network.

- d.** Follow the on-screen instructions to complete setup.

**Finish**

The installation is now complete.

## For Mac OS X

### Before you install

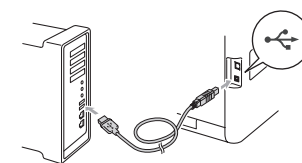
Make sure your machine is connected to the power and your Macintosh is ON. You must be logged on with Administrator rights.

- IMPORTANT**
- For Mac OS X 10.4.10 users, upgrade to Mac OS X 10.4.11 – 10.6.x. (For the latest drivers and information on the Mac OS X you are using, visit <http://solutions.brother.com/>.)

- Note**  
If you want to setup the PS driver (BR-Script3 printer driver), please go to the Brother Solutions Center at <http://solutions.brother.com/> and click **Downloads** on your model page to download the driver and visit **FAQ's** for installation instructions.

### 6 For USB Interface Cable Users

- a.** Connect the USB cable to the USB connector marked with a symbol, and then connect the cable to your Macintosh.
- b.** Make sure the machine power switch is on.



#### Install the printer driver

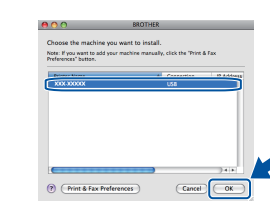
- c.** Put the installation CD-ROM into your CD-ROM drive.

- d.** Double-click the **Start Here OSX** icon. Follow the on-screen instructions.

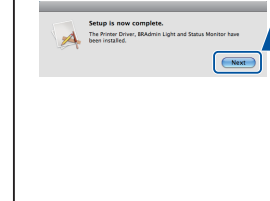
**Note**  
It may take a few minutes for installation to complete.



- e.** Follow the on-screen instructions until this screen appears. Choose your machine from the list, and then click **OK**.



- f.** Click **Next**.



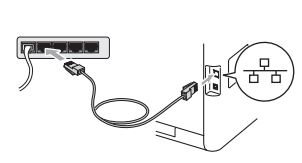
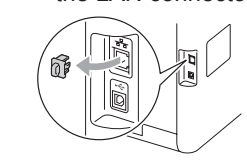
**Note**  
When the **Brother Support** screen appears, make your selection and follow the on-screen instructions.

**Finish**

The installation is now complete.

### 6 For Wired Network Interface Cable Users

- a.** Remove the protective cap from the LAN connector.
- b.** Connect the network interface cable to the LAN connector marked with a symbol and then connect it to a free port on your hub.
- c.** Make sure the machine power switch is on.



#### Install the printer driver

- d.** Put the installation CD-ROM into your CD-ROM drive.

- e.** Double-click the **Start Here OSX** icon. Follow the on-screen instructions.

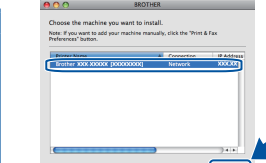
**Note**  
It may take a few minutes for installation to complete.



- f.** Follow the on-screen instructions until this screen appears. Choose your machine from the list, and then click **OK**.

**Note**

- If there is more than one of the same model connected on your network, the MAC Address (Ethernet Address) will be displayed after the model name.
- You can find your machine's MAC Address (Ethernet Address) and IP Address by printing out the **Printer Settings Page**. See *Print the Printer Settings Page* below.



- g.** Click **Next**.

**Note**  
When the **Brother Support** screen appears, make your selection and follow the on-screen instructions.

**Finish**

The installation is now complete.

**Note**  
If you use a specified IP Address for the machine, you must set the Boot Method to Static by using the control panel. For more information, see *Network menu* in the *Network User's Guide*.

## Color Correction (if needed)

### Color Calibration

The output density for each color may vary depending on the environment the machine is in, such as temperature and humidity. Calibration helps you to improve the color density.

- Note**
- If you print using the Direct Print feature or the BR-Script printer driver, you need to perform the calibration from the control panel. See *Using the control panel*.
  - If you print using the Windows® printer driver, the driver will get the calibration data automatically if both **Use Calibration Data** and **Get Device Data Automatically** are on. See *Advanced tab* in the *User's Guide*.
  - If you print using the Macintosh printer driver, you need to perform the calibration using **Status Monitor**. After turning **Status Monitor** on, choose **Color Calibration** from **Control** menu. See *Color Calibration* in the *User's Guide*.

### Using the control panel

- Press **+ or -** to choose **Color Correction**. Press **OK**.
- Press **+ or -** to choose **ColorCalibration**. Press **OK**.
- Press **OK** to choose **Calibrate**.
- Press **+** to choose **Yes**.

You can reset the calibration parameters back to those set at the factory.

- Press **+ or -** to choose **Color Correction**. Press **OK**.
- Press **+ or -** to choose **ColorCalibration**. Press **OK**.
- Press **+ or -** to choose **Reset**. Press **OK**.
- Press **+** to choose **Reset**.

### Color Registration

#### Auto Registration

You can adjust the print position of each color automatically.

- Press **+ or -** to choose **Color Correction**. Press **OK**.
- Press **+ or -** to choose **Auto Regist..**. Press **OK**.
- Press **OK** to choose **Registration**.
- Press **+** to choose **Yes**.

To adjust the print position of each color manually, see *Manual Registration* in the *User's Guide*.

## Print the Printer Settings Page

The Printer Settings Page lists all the current printer settings, including network settings.

- Press **+ or -** to choose **Machine Info..**. Press **OK**.
- Press **OK** to choose **Print Settings**.

**Note**  
**For Network Users**  
If the **IP Address** on the Printer Settings Page shows **0.0.0.0**, wait for one minute and try again.

## Brother CreativeCenter Icon



Get inspired. Double-click the Brother CreativeCenter icon on your desktop to access a FREE web site with many ideas and resources for personal and professional use.



<http://www.brother.com/creativecenter/>