

imation

IMATION PERSONAL S250 AND D250

powered by
IRONKEY™



THE ULTIMATE CRYPTO DEVICE

We designed the Imation Personal S250 and D250 flash drives for people who demand the ultimate from their USB flash storage devices: Ultimate security. Ultimate performance. And ultimate reliability.

BUILT TO BE THE WORLD'S MOST SECURE FLASH DRIVES

Imation Personal S250 and D250 drives meet or exceed the exacting security requirements of military and intelligence agencies the world over. Every drive is equipped with strong hardware encryption powered by the Imation Cryptochip, which protects your information and identity using the same algorithm approved by the DOD for storing Top Secret data. A ruggedized, waterproof metal chassis helps defend it from the elements or mischief, and active anti-malware prevents USB threats from spreading.

FASTER PERFORMANCE, LONGER LIFE

Imation Personal S250 drives use premium quality dual-channel flash memory to give you fast file read performance of up to 31MB/second and write speeds of up to 18MB/second. High-quality SLC memory also means your drive will last years longer than drives equipped with traditional flash memory. The Imation Personal D250 features dual-channel memory and reads files at up to 29MB/second.

PROTECTION THAT NEVER SLEEPS

Unlike software-based encryption, Imation's 256-bit hardware encryption is always on and can't be disabled. And with the Imation Cryptochip handling encryption, PC performance doesn't suffer.

STANDS UP TO MISCHIEF AND MAYHEM

Imation's hardware-based encryption and password verification can't be disabled by malware or a careless user. Self-defending Imation drives actively protect against cold-boot attacks and the spread of worms, crimeware and other malicious code. And if a thief enters 10 incorrect passwords in an attempt to break into the drive, the Cryptochip will securely erase all encrypted data and self-destruct.

TWO VERSIONS, MAXIMUM FLEXIBILITY

Two flavors let you choose the best secure flash drive for you.

Imation Personal S250 Series. High-performance and extra long-lasting S250 drives are built to stand up to continuous use on the road. Dual-channel SLC flash memory delivers exceptional performance and longevity.

Imation Personal D250 Series. D250 drives balance performance and value for users who don't require constant access to data. Same great security as the S250, with dual-channel MLC flash memory for reliable read/write performance.

BENEFITS

Protect your data and identity from thieves, malware and more

Access data on Windows, Mac or Linux

Store virtual desktops so you can work anywhere you go, while leaving no trace of your presence

Safely browse the Internet from any Windows computer

Manage all your online passwords easily and securely

Gain faster file read/write performance and longer life (S250)

Never worry about stolen data: your drive will self-destruct after 10 failed password attempts

Manage your drive settings using a new and improved control panel localized into eight languages

No Windows administrative privileges required

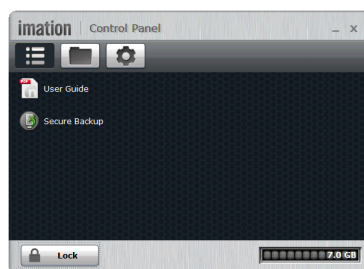
No software or drivers to install



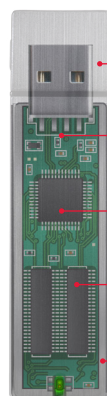
IMATION PERSONAL S250 AND D250



CONTROL PANEL



FEATURES



- Rugged Metal Casing**
Waterproof and Tamper-Resistant
- Tamper-Resistant**
FIPS Validated 140-2 Level 3*
- Always-On Data Encryption**
AES 256-Bit Hardware Encryption
- High-Performance Memory**
Dual-channel SLC or MLC flash
- Portable Applications**
Encrypted Backup

SIMPLE ONLINE PASSWORD MANAGEMENT

Manage all your passwords directly from the drive, and protect them using the same hardware encryption engine that guards your other data. You can even use your Imation Personal flash drive as a token for strong authentication to lock down your PayPal or eBay accounts.

SAFE, SECURE WORKING AND BROWSING

Use your Imation Personal S250 or D250 drive to store a secure virtual workspace that lets you work with confidence anywhere you go – without leaving so much of a hint that you were ever there. And every drive comes with a pre-configured, portable version of Mozilla Firefox browser for Windows computers. All your data, cookies, and Web history are maintained locally on the drive. For further protection, the optional Imation Secure Sessions service protects your privacy on the web by triple-encrypting all of your Web surfing traffic and protects you from spoofed websites.

EASIER TO USE, EVERYWHERE

When you insert your Imation Personal drive into a laptop or desktop computer, a new and improved control panel automatically appears to guide you through password authentication and data access – and it does it in eight languages.

BUILT TO LAST

Shielded in a solid, tamper-resistant and waterproof metal casing that surrounds specially sealed internal components, Imation drives are built to survive years of wear and tear.

Imation Personal S Series	SKU
8GB S250	D2-S250-S08-2FIPS
16GB S250	D2-S250-S16-2FIPS

Imation Personal D Series	SKU
2GB D250	D2-D250-B02-2FIPS
4GB D250	D2-D250-B04-2FIPS
8GB D250	D2-D250-B08-2FIPS
16GB D250	D2-D250-B16-2FIPS
32GB D250	D2-D250-B32-2FIPS

TECHNICAL SPECS

CAPACITIES

S250: 8GB and 16GB
D250: 2GB, 4GB, 8GB, 16GB and 32GB

SPEED

S250: Up to 31MB/sec read; Up to 18MB/sec write
D250: Up to 29MB/sec read; Up to 13MB/sec write

MEMORY

S250: Dual-channel SLC Flash
D250: Dual-channel MLC Flash

DIMENSIONS 75mm X 19mm X 9mm

WEIGHT .9 oz (25 grams)

WATERPROOF MIL-STD-810F

TEMPERATURE

Operating: 0°C, +70°C
Storage: -40°C, +85°C

HARDWARE USB 2.0 high speed

CROSS PLATFORM

Windows XP SP2+, Vista, Windows 7
Macintosh® OS X 10.5+
Linux 2.6+

LANGUAGES

English, German, French, Spanish, Japanese, Korean, Simplified Chinese, Traditional Chinese

HARDWARE ENCRYPTION

Data: AES 256 CBC (Cipher-Block Chained) mode
PKI: RSA-2048 bit
Hashing: SHA-256 bit
FIPS 140-2 Level 3 NIST validated

*Cryptographic Module Certification #1734

AES (Cert #1874), DRBG (Cert #152), HMAC (Cert #1119),
RNG (Cert #774), RSA (Cert #955), SHS (Cert #1647),
Triple-DES (Cert #965)

SECTION 508 COMPLIANT

Control Panel and documentation

WARRANTY 1 year limited

SALES CONTACTS

WEBSITE www.imation.com/mobilesecurity

US AND CANADA

securitysales@imation.com
+1 888 435 7682 or +1 408 879 4300

EUROPE

emeasecuritysales@imation.com
+44 (0)1344 402 013

ASIA PACIFIC

apacsecuritysales@imation.com
+65 6499 7199