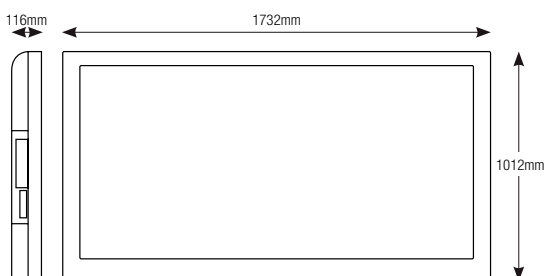
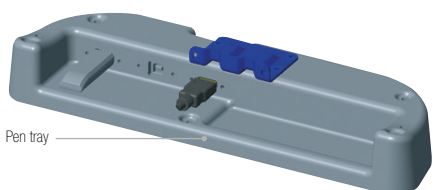
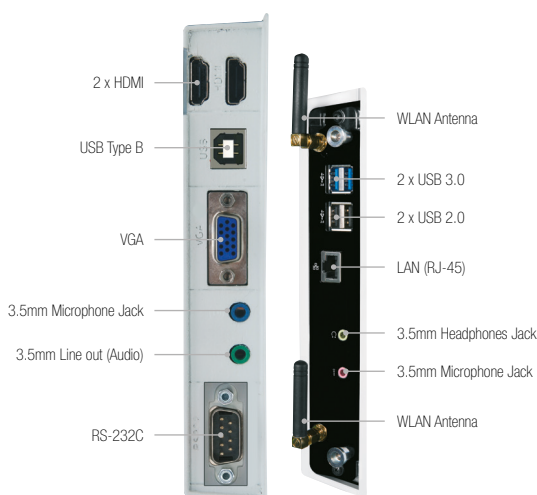


Technical Specifications



LCD Component	75" (1905mm) diagonal	
Backlight	Edge LED	
Max. Resolution	1920 x 1080	
Max. Colours	1.06 billion colours (Dithered 10bit)	
Brightness	500cd/m2	
Contrast Ratio	5000:1	
Viewing Angle (H/V)	178°/178°	
Supported Resolutions	640x480, 800x600, 1024x768, 1280x720, 1280x768, 1280x960, 1280x1024, 1400x1050, 1440x900, 1920x1080 (Progressive 60Hz)	
Signal	VGA, SVGA, XGA, WXGA, FULL HD	
Panel Life Time	50,000 Hours	
Frequency	60Hz	
Touch Screen	Infrared (10 points multi-touch support)	
Glass	Anti Glare 4mm Thick	
Input Terminals	Digital	2x HDMI version 1.3
	Analog	VGA x 1 D-Sub 15-pin
	PLUG & PLAY	DDC2B (VESA) for Computer HDMI, VGA
	Audio	Microphone mini 3.5mm jack x 1, Line out 3.5mm x 1
	Control (RS-232C)	D-Sub 9-pin x 1 for device control
Output Terminals	USB	USB B-type connector (for external touch screen) x 1
	Control (RS-232C) for external speaker	D-Sub 9-pin x 1
OSD	Independent from languages, the OSD is iconic	
Screen Freeze	Yes	
Speaker		15W+15W
	Detection Method	Infrared blocking detection method
	Detection Area	(1650.24 (H) x 928.26 (V) mm)
Touch Panel	Touch Accuracy	1mm
	PC Connector	USB 2.0
	Driver	Win Multi Touch, MAC single touch support
	Touch Pen	Yes
	Power Requirement	110-240V/50-60Hz
Operating/Storage Temperature	Operating temperature:	0-40 degrees celsius
	Storage temperature:	-15-50 degrees celsius
Operating/Storage Humidity	80% relative humidity / 80% relative humidity	
Power Consumption Operating/Standby	385W / 3W	
Dimensions (mm)	1732mm x 1012mm x 116mm	
Weight	80Kg	
Colour	White Bezel	
Main Accessories	Remote Controller and Battery (CR2025 3V), Power Cable, Instruction Book, HDMI cable, 2 Antenna (PC Version), Driver DVD, Wall Mount Kit, USB AtoB cable (non-PC Version), Stylus pen and Pen tray	
Optional Accessories	Stylus Pen	
Remote Control	Protocol: NEC6122 Carrier Frequency: 37.92KHz	
Certification	RoHS, CB, S-Mark	
VPS PC Specification	Processor	Intel® Core i5 3610ME
	Operating system	Windows 10
	Chipset	Intel® QM77 (Panther Point)
	WLAN	WLAN : 802.11 a/b/g/n wireless support with MIMO
	Bluetooth	Bluetooth 4.0
Network	LAN	10/100/1000 Mbps LAN support
	USB	2 x USB 3.0 ports 2 x USB 2.0 ports
System memory	4GB RAM, 500GB HDD	
Warranty	3 years Hitachi warranty	