

# Dell Precision Tower 3620

## Owner's Manual



## Notes, cautions, and warnings

 | **NOTE:** A NOTE indicates important information that helps you make better use of your computer.

 | **CAUTION:** A CAUTION indicates either potential damage to hardware or loss of data and tells you how to avoid the problem.

 | **WARNING:** A WARNING indicates a potential for property damage, personal injury, or death.

**Copyright © 2015 Dell Inc. All rights reserved.** This product is protected by U.S. and international copyright and intellectual property laws. Dell™ and the Dell logo are trademarks of Dell Inc. in the United States and/or other jurisdictions. All other marks and names mentioned herein may be trademarks of their respective companies.

<b>1 Working on your computer.....</b>	<b>5</b>
Safety instructions.....	5
Before working inside your computer.....	5
Turning off your computer.....	6
After working inside your computer.....	6
<b>2 Removing and installing components.....</b>	<b>7</b>
Recommended tools.....	7
Removing the cover.....	7
Installing the cover.....	7
Removing the front bezel.....	7
Installing the front bezel.....	8
Removing the hard drive assembly.....	8
Installing the hard drive assembly.....	9
Removing the optical drive.....	9
Installing the optical drive.....	10
Removing power switch.....	10
Installing the power switch.....	12
Removing the intrusion switch.....	12
Installing the intrusion switch.....	13
Removing the memory module.....	13
Installing the memory module.....	13
Installing the PCIe Solid State Drive SSD.....	14
Removing the PCIe Solid State Drive SSD .....	15
Removing the power supply unit PSU.....	15
Installing the power supply unit PSU.....	16
Removing the Input-Output panel.....	16
Installing the Input-Output panel.....	17
Removing the speaker.....	17
Installing the speaker.....	18
Removing the expansion card.....	18
Installing the expansion card.....	19
Removing the system fan.....	19
Installing the system fan.....	20
Removing the heat sink assembly.....	20
Installing the heat sink assembly.....	20
Removing the processor.....	20
Installing the processor.....	21
Removing the system board.....	21
Installing the system board.....	22
System board components.....	23
<b>3 System Setup.....</b>	<b>25</b>

Boot Sequence.....	25
Navigation keys.....	26
System Setup options.....	26
Updating the BIOS .....	33
Jumper settings.....	34
System and setup password.....	34
Assigning a system password and setup password.....	34
Deleting or changing an existing system and or setup password.....	35
Disabling a system password.....	35
<b>4 Diagnostics.....</b>	<b>37</b>
Enhanced Pre-Boot System Assessment — ePSA diagnostics.....	37
Troubleshooting your computer.....	37
Power LED diagnostics.....	37
Beep code.....	38
Error messages.....	38
<b>5 Specifications.....</b>	<b>42</b>
<b>6 Contacting Dell.....</b>	<b>47</b>

# Working on your computer

## Safety instructions

Use the following safety guidelines to help protect your computer from potential damage and to help to ensure your personal safety. Unless otherwise noted, each procedure included in this document assumes that the following conditions exist:

- You have read the safety information that shipped with your computer.
- A component can be replaced or--if purchased separately--installed by performing the removal procedure in reverse order.

**⚠ WARNING:** Disconnect all power sources before opening the computer cover or panels. After you finish working inside the computer, replace all covers, panels, and screws before connecting to the power source.

**⚠ WARNING:** Before working inside your computer, read the safety information that shipped with your computer. For additional safety best practices information, see the Regulatory Compliance Homepage at [www.dell.com/regulatory\\_compliance](http://www.dell.com/regulatory_compliance)

**⚠ CAUTION:** Many repairs may only be done by a certified service technician. You should only perform troubleshooting and simple repairs as authorized in your product documentation, or as directed by the online or telephone service and support team. Damage due to servicing that is not authorized by Dell is not covered by your warranty. Read and follow the safety instructions that came with the product.

**⚠ CAUTION:** To avoid electrostatic discharge, ground yourself by using a wrist grounding strap or by periodically touching an unpainted metal surface, such as a connector on the back of the computer.

**⚠ CAUTION:** Handle components and cards with care. Do not touch the components or contacts on a card. Hold a card by its edges or by its metal mounting bracket. Hold a component such as a processor by its edges, not by its pins.

**⚠ CAUTION:** When you disconnect a cable, pull on its connector or on its pull-tab, not on the cable itself. Some cables have connectors with locking tabs; if you are disconnecting this type of cable, press in on the locking tabs before you disconnect the cable. As you pull connectors apart, keep them evenly aligned to avoid bending any connector pins. Also, before you connect a cable, ensure that both connectors are correctly oriented and aligned.

**📌 NOTE:** The color of your computer and certain components may appear differently than shown in this document.

## Before working inside your computer

To avoid damaging your computer, perform the following steps before you begin working inside the computer.

- 1 Ensure that you follow the [Safety instructions](#).
- 2 Ensure that your work surface is flat and clean to prevent the computer cover from being scratched.
- 3 Turn off your computer, see [Turning off your computer](#).





**⚠ CAUTION:** To disconnect a network cable, first unplug the cable from your computer and then unplug the cable from the network device.

- 4 Disconnect all the network cables from the computer.
- 5 Disconnect your computer and all attached devices from the electrical outlets.
- 6 Press and hold the power button while the computer is unplugged to ground the system board.
- 7 Remove the cover.

**⚠ CAUTION:** Before touching anything inside your computer, ground yourself by touching an unpainted metal surface, such as the metal at the back of the computer. While you work, periodically touch an unpainted metal surface to dissipate static electricity, which could harm internal components.

# Turning off your computer

**⚠ CAUTION:** To avoid losing data, save and close all open files and exit all open programs before you turn off your computer.

- Turning off your computer:
  - In Windows 10 (using a touch enabled device or mouse):
    - Click or tap .
    - Click or tap  and then click or touch **Shut down**.
  - In Windows 8 (using a touch enabled device):
    - Swipe in from the right edge of the screen, opening the **Charms** menu and select **Settings**.
    - Tap  and then tap **Shut down**.
  - In Windows 8 (using a mouse):
    - Point to upper-right corner of the screen and click **Settings**.
    - Click  and then click **Shut down**.
  - In Windows 7:
    - Click **Start**.
    - Click **Shut Down**.

or

  - Click **Start**.
  - Click the arrow in the lower-right corner of the **Start** menu and then click **Log off**.

- Ensure that the computer and all attached devices are turned off. If your computer and attached devices did not automatically turn off when you shut down your operating system, press and hold the power button for about 6 seconds to turn them off.

## After working inside your computer

After you complete any replacement procedure, ensure that you connect any external devices, cards, and cables before turning on your computer.

- Replace the cover.
  - ⚠ CAUTION:** To connect a network cable, first plug the cable into the network device and then plug it into the computer.
- Connect any telephone or network cables to your computer.
- Connect your computer and all attached devices to their electrical outlets.
- Turn on your computer.
- If required, verify that the computer works correctly by running **Dell Diagnostics**.

# Removing and installing components

This section provides detailed information on how to remove or install the components from your computer.

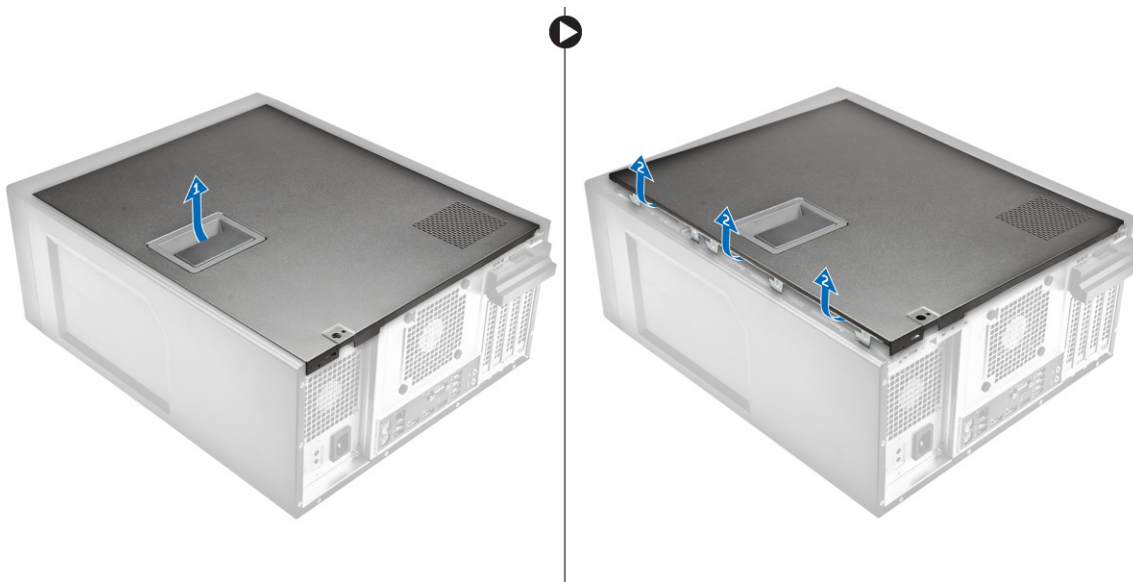
## Recommended tools

The procedures in this document require the following tools:

- Small flat blade screwdriver
- Phillips screwdriver
- Small plastic scribe

## Removing the cover

- 1 Follow the procedure in [Before Working Inside Your Computer](#).
- 2 Pull the release latch to release the cover [1].
- 3 Slide the cover and lift the cover to remove it from the computer [2].



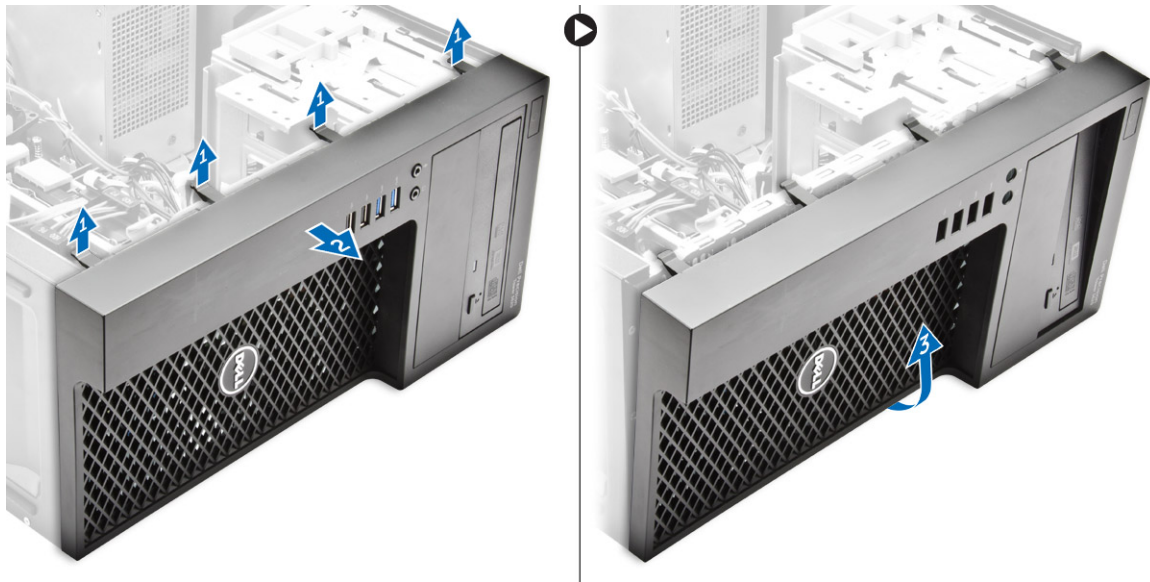
## Installing the cover

- 1 Align the cover along its tabs on the chassis of the computer.
- 2 Press down on the cover until it clicks into place.
- 3 Follow the procedure in [After Working Inside Your Computer](#).

## Removing the front bezel

- 1 Follow the procedure in [Before Working Inside Your Computer](#).
- 2 Remove the [cover](#).
- 3 To remove the front bezel:

- a Lift the retention tabs [1] to release the front bezel [2].
- b Lift the front bezel to remove it from the computer [3].

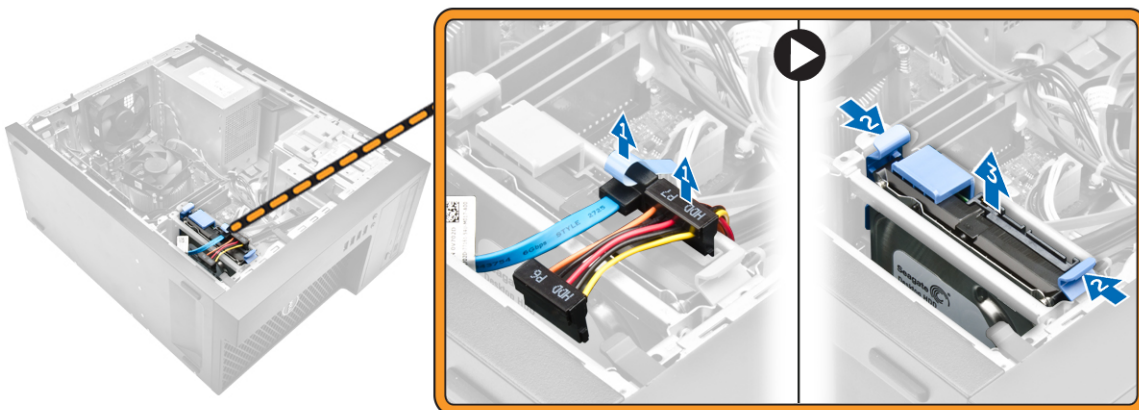


## Installing the front bezel

- 1 Hold the bezel and ensure that the hooks on the bezel snap into the notches on the computer.
- 2 Rotate the front bezel toward the computer.
- 3 Press the front bezel until the tabs click into place.
- 4 Install the [cover](#).
- 5 Follow the procedure in [After Working Inside Your Computer](#).

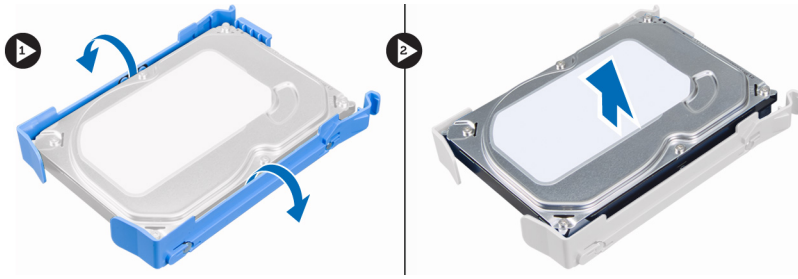
## Removing the hard drive assembly

- 1 Follow the procedure in [Before Working Inside Your Computer](#).
- 2 Remove the [cover](#).
- 3 Disconnect the data cable and the power cable from the hard drive [1].
- 4 Press the blue securing bracket tabs [2] and lift the hard drive bracket out of the hard drive bay [3].



- 5 Flex the hard drive bracket and remove the hard drive from the hard drive bracket.





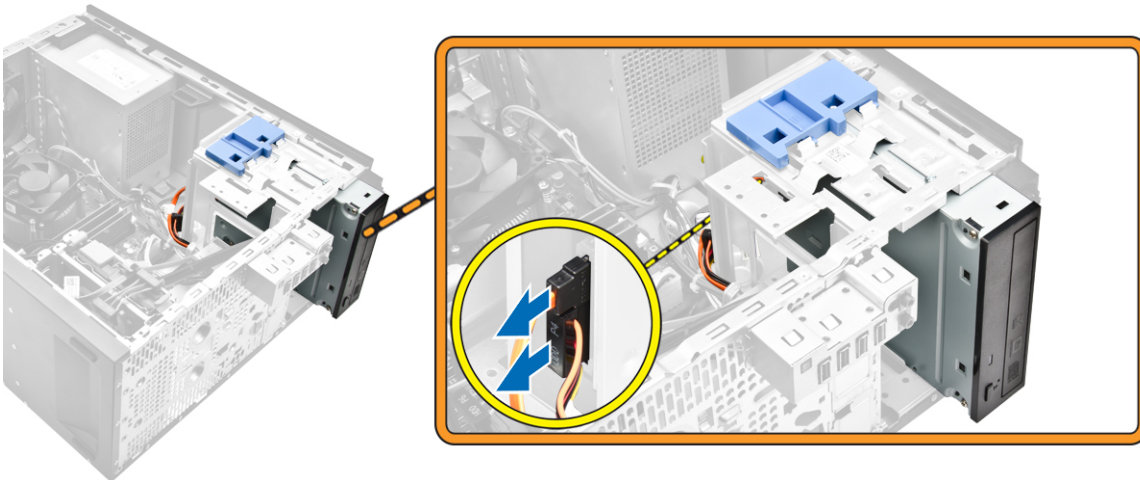
- 6 Repeat steps 3 and 4 to remove the additional hard drive (if available).

## Installing the hard drive assembly

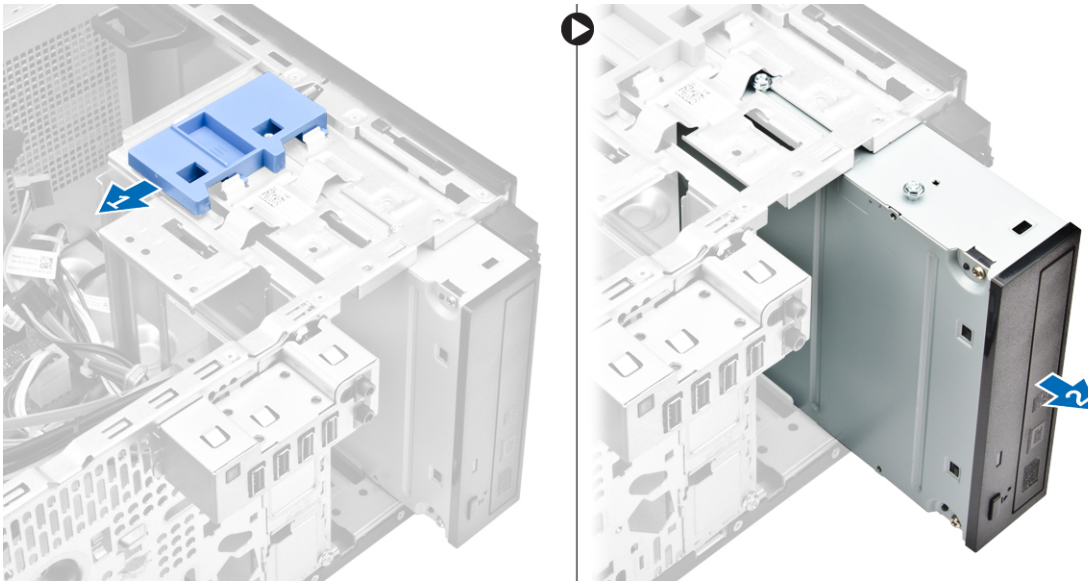
- 1 Insert the hard drive into the hard drive bracket.
- 2 Press the securing brackets and slide the hard drive assembly into the hard drive bay.
- 3 Connect the data cable and the power cable to the hard drive.
- 4 Install the [cover](#).
- 5 Follow the procedure in [After Working Inside Your Computer](#).

## Removing the optical drive

- 1 Follow the procedure in [Before Working Inside Your Computer](#).
- 2 Remove:
  - a [cover](#)
  - b [front bezel](#)
- 3 Disconnect the data cable and the power cable from the optical drive.



- 4 To remove the optical drive:
  - a Slide and hold the optical drive latch to unlock the optical drive [1].
  - b Slide the optical drive from the computer [2].



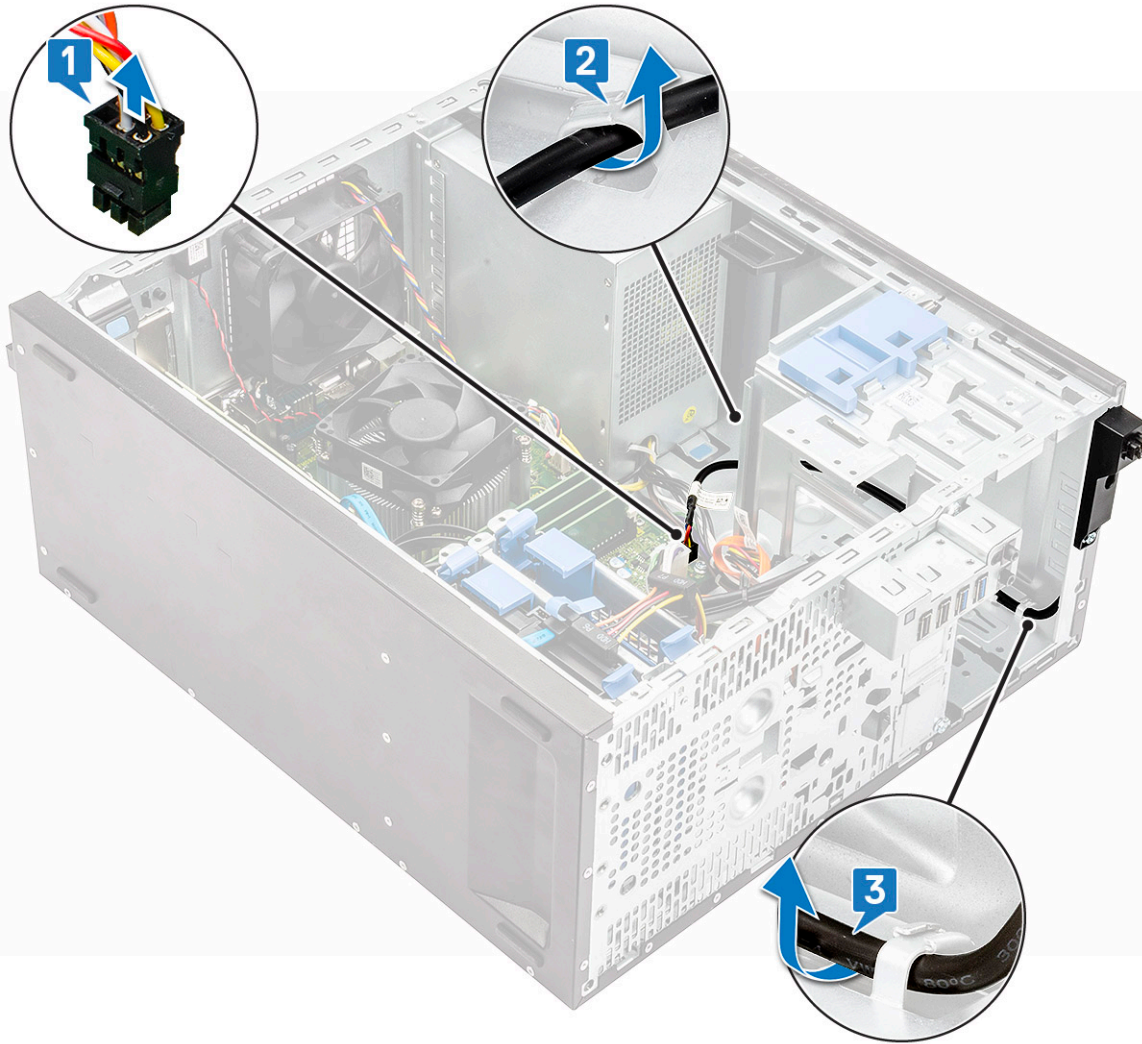
- 5 Repeat steps 3 and 4 to remove the second optical drive (if available).

## Installing the optical drive

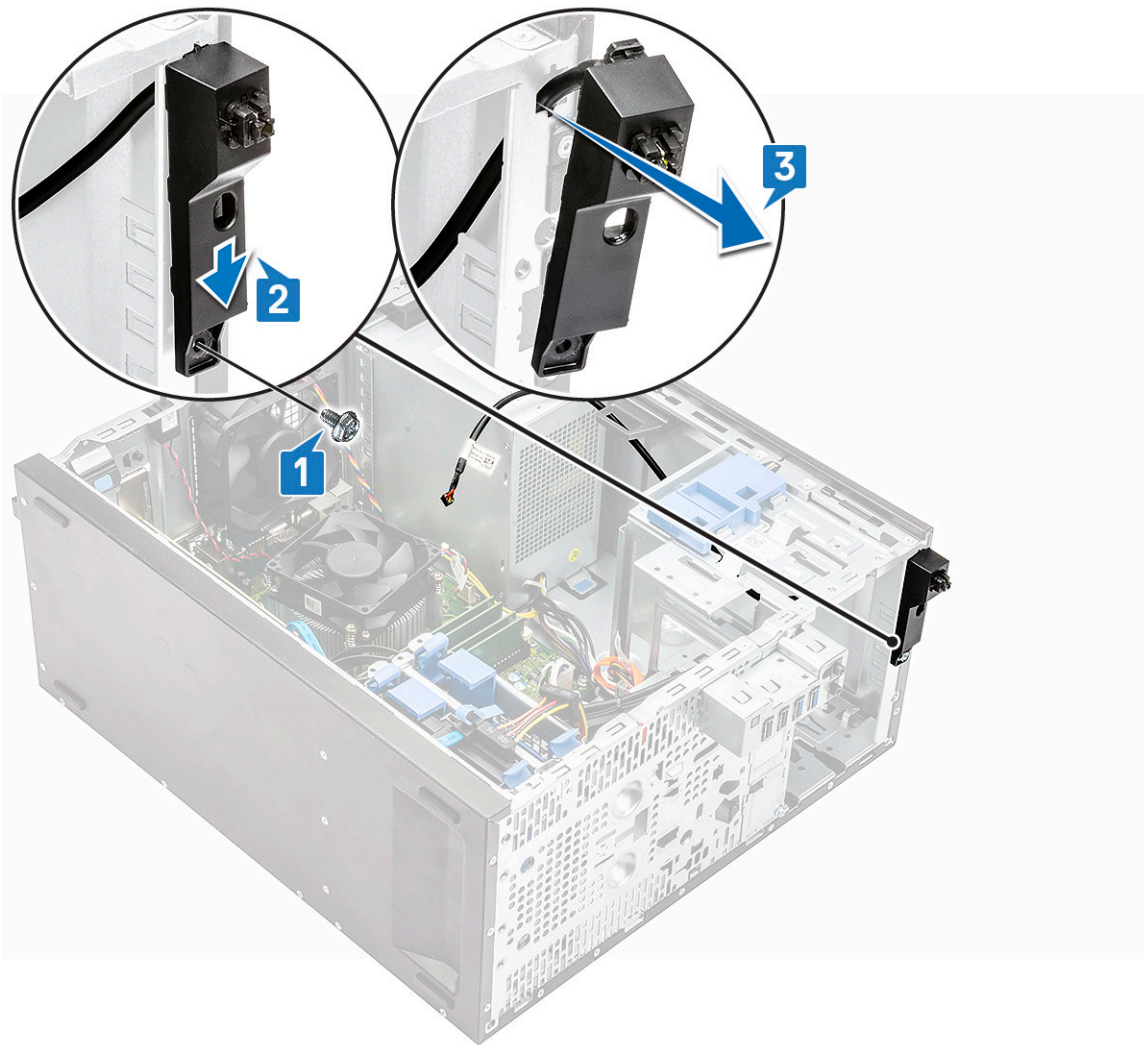
- 1 Slide the optical drive into the drive bay from the front of the computer until it is secured.
- 2 Connect the data cable and power cable to the optical drive.
- 3 Install:
  - a front bezel
  - b cover
- 4 Follow the procedure in [After Working Inside Your Computer](#).

## Removing power switch

- 1 Follow the procedure in [Before working inside your computer](#).
- 2 Remove the:
  - a Side cover
  - b Front bezel
  - c HDD assembly
  - d Optical drive module
- 3 To remove the power switch:
  - a Disconnect the power switch cable from the system board [1].
  - b Unroute the power switch cable, from the routing clips on the system chassis [2] [3].



- a Remove the screw that secures the power switch on to the system chassis [1].
- b Gently push down the power switch module to release it from the slot [2], remove the power switch from the system [3].



## Installing the power switch

1 Align and slide the power switch module into the slot on the chassis until it clicks into place.

**NOTE:** Ensure that the power switch cable is routed correctly through the cable routing clips on the system chassis.

2 Connect the power switch cable to the connector on the system board.

3 Install the:

- a Optical drive module
- b HDD assembly
- c Front bezel
- d Side cover

4 Follow the procedure in [After working inside your computer](#).

## Removing the intrusion switch

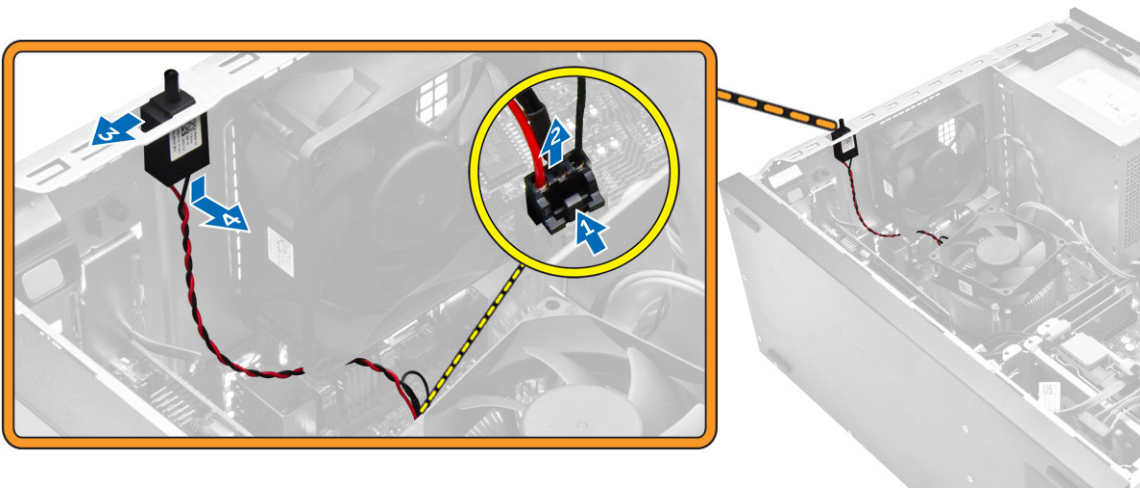
1 Follow the procedure in [Before Working Inside Your Computer](#).

2 Remove the [cover](#).

3 To remove intrusion switch:

- a Press the tab to disconnect the intrusion switch cable from the system board [1, 2].
- b Slide the knob of the intrusion switch toward the bottom of the chassis [3].

- c Pull the intrusion switch to remove it from the slot [4].

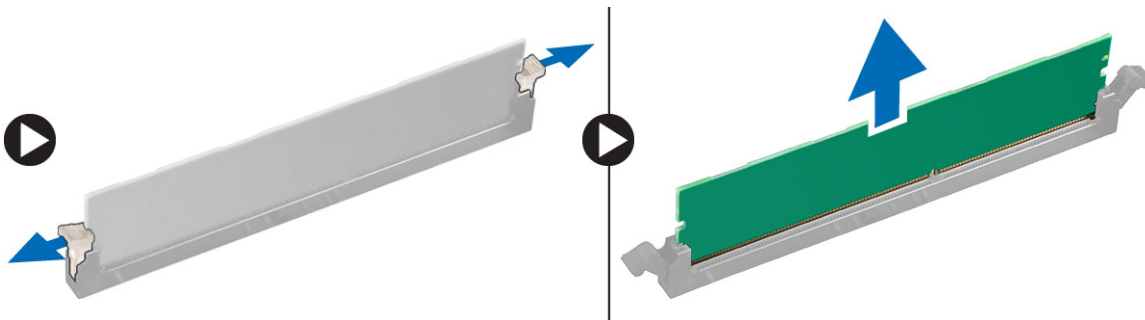


## Installing the intrusion switch

- 1 Insert the intrusion switch into the slot in the chassis.
- 2 Slide the intrusion switch to secure it.
- 3 Connect the intrusion switch cable to the system board.
- 4 Install the [cover](#).
- 5 Follow the procedure in [After Working Inside Your Computer](#).

## Removing the memory module

- 1 Follow the procedure in [Before Working Inside Your Computer](#).
- 2 Remove the [cover](#).
- 3 Press the memory module retention tabs on each side of the memory module.
- 4 Lift the memory module out of the connectors on the system board.



## Installing the memory module

- 1 Align the notch on the memory module with the tab on the memory module connector.
- 2 Insert the memory module into the memory module socket.
- 3 Press the memory module until the retention tabs clicks into place.
- 4 Install the [cover](#).
- 5 Follow the procedure in [After Working Inside Your Computer](#).

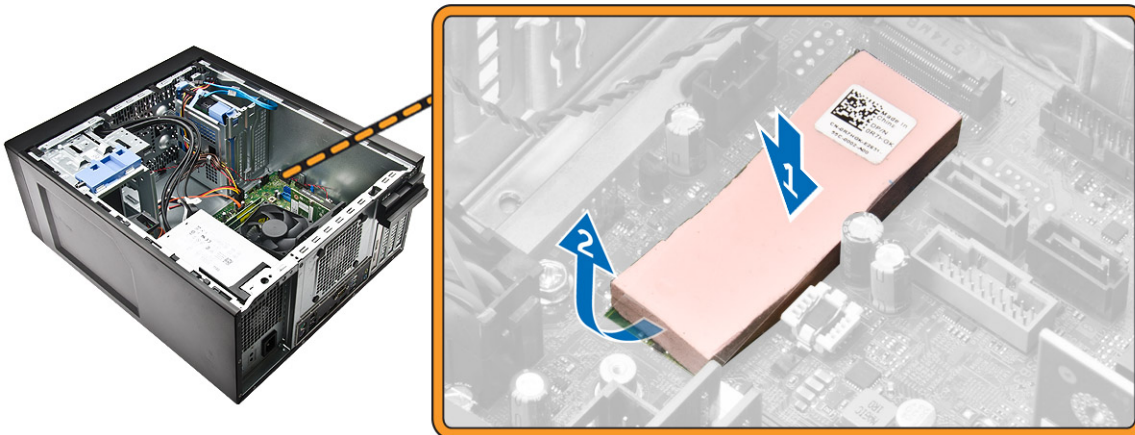
# Installing the PCIe Solid State Drive SSD

① **NOTE:** The PCIe SSD card is shipped with the following components:

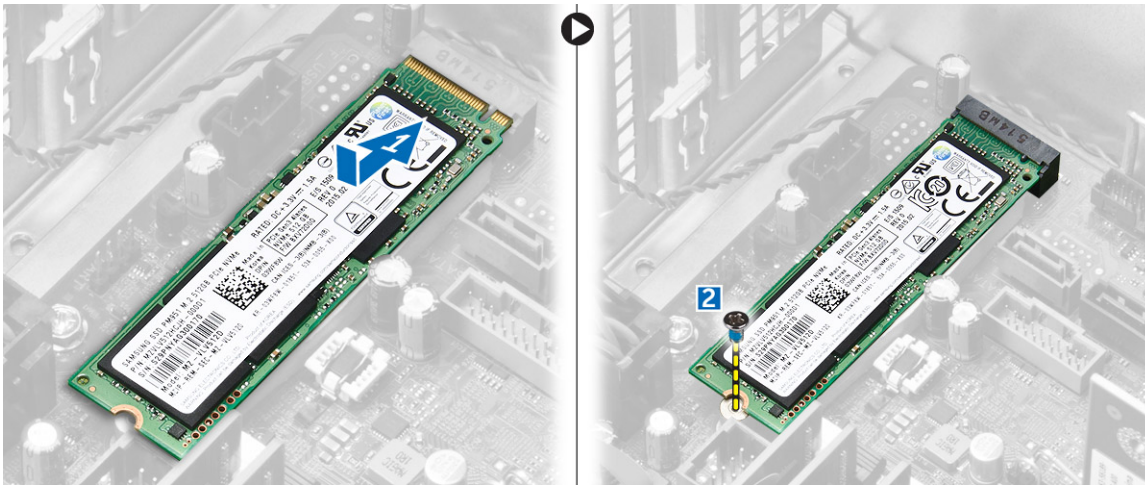
- 1 PCIe SSD card
  - 2 Thermal Pad
  - 3 Screw
- 1 Follow the procedure in [Before Working Inside Your Computer](#).
  - 2 Remove the:
    - a [cover](#)
    - b [hard drive](#)
    - c [optical drive](#)
  - 3 Peel the blue adhesive tape from the thermal pad.



- 4 Place the thermal pad in the slot on the system board and peel the pink adhesive tape [1,2].



- 5 Slide the PCIe SSD card into the slot and tighten the screw to secure the card to the system board [1,2].

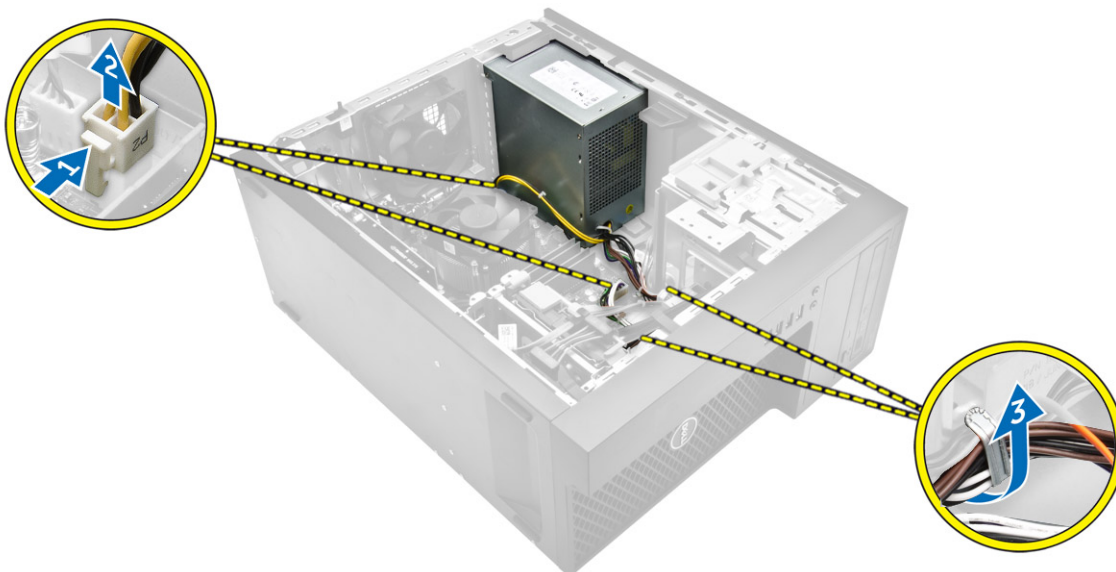


## Removing the PCIe Solid State Drive SSD

- 1 Remove the screw that secures the PCIe SSD card.
- 2 Slide and lift the PCIe SSD card from the computer.
- 3 Lift the thermal pad from the system board.
- 4 Install the:
  - a optical drive
  - b hard drive
  - c cover
- 5 Follow the procedure in [After Working Inside Your Computer](#).

## Removing the power supply unit PSU

- 1 Follow the procedure in [Before Working Inside Your Computer](#).
- 2 Remove the [cover](#).
- 3 Press the tab of the 4-pin power cables and disconnect it from the system board [1,2].
- 4 Release the cables from the clip [3].



- 5 To remove the power supply unit (PSU):
  - a Remove the screws that secure the PSU to the computer [1].

- b Disconnect the PSU cables from the connectors on the system board.
- c Unroute the PSU cables from the retention clips.
- d Press the metal release tab [2], slide [3] and lift the PSU out of the computer [4].



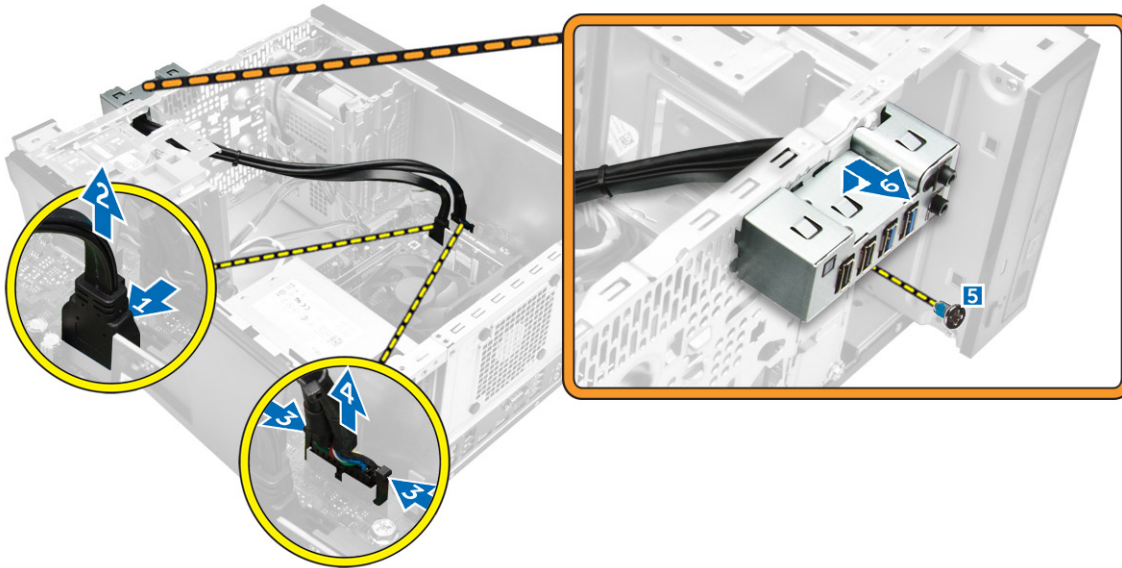
## Installing the power supply unit PSU

- 1 Insert the PSU into the PSU slot and slide it toward the back of the computer until it clicks into place.
- 2 Tighten the screws to secure the PSU to the computer.
- 3 Route the PSU cables through the retention clips.
- 4 Connect the PSU cables to the connectors on the system board.
- 5 Install the [cover](#).
- 6 Follow the procedure in [After Working Inside Your Computer](#).

## Removing the Input-Output panel

- 1 Follow the procedure in [Before Working Inside Your Computer](#).
- 2 Remove:
  - a [cover](#)
  - b [front bezel](#)
- 3 To remove the I/O panel:
  - a Disconnect the I/O panel, and USB data cables from the system board [1,2,3,4].
  - b Remove the screw that secures the I/O panel to the computer [5].
  - c Slide the I/O panel toward the left of the computer to release it and pull the I/O panel along with its cable out of the computer [6].



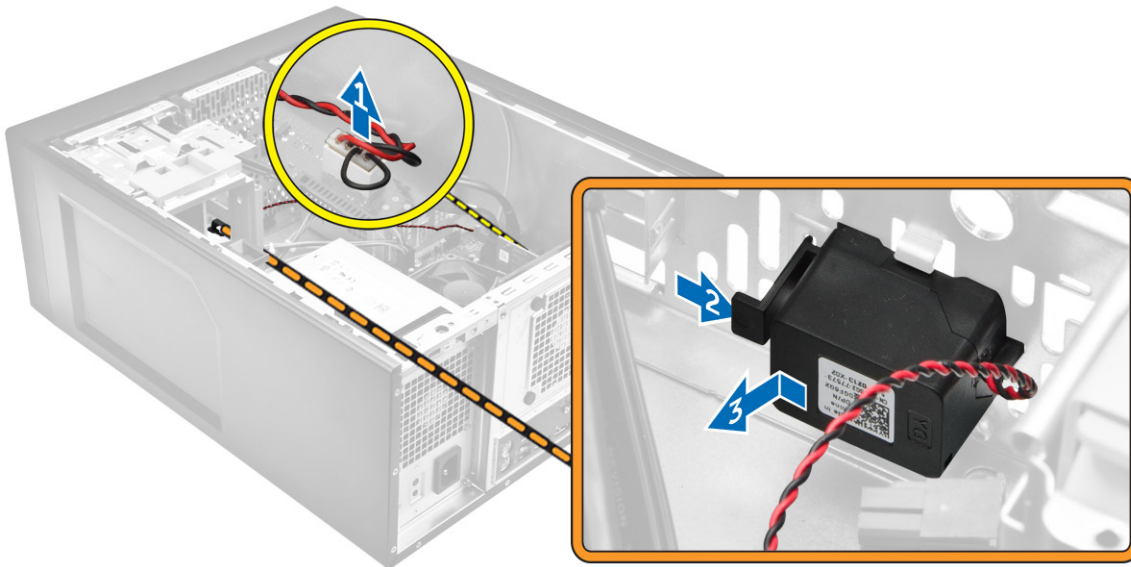


## Installing the Input-Output panel

- 1 Insert the I/O panel into the slot on the front of the chassis.
- 2 Slide the I/O panel toward the right of the computer to secure it to the chassis.
- 3 Tighten the screw to secure the I/O panel to the chassis.
- 4 Connect the I/O panel, and USB data cable to the system board.
- 5 Install :
  - a front bezel
  - b cover
- 6 Follow the procedure in *After Working Inside Your Computer*.

## Removing the speaker

- 1 Follow the procedure in *Before Working Inside Your Computer*.
- 2 Remove the cover.
- 3 To remove the speaker:
  - a Disconnect the speaker cable from system board [1].
  - b Press the securing tab on the speaker to slide and remove the speaker from the chassis [2, 3].

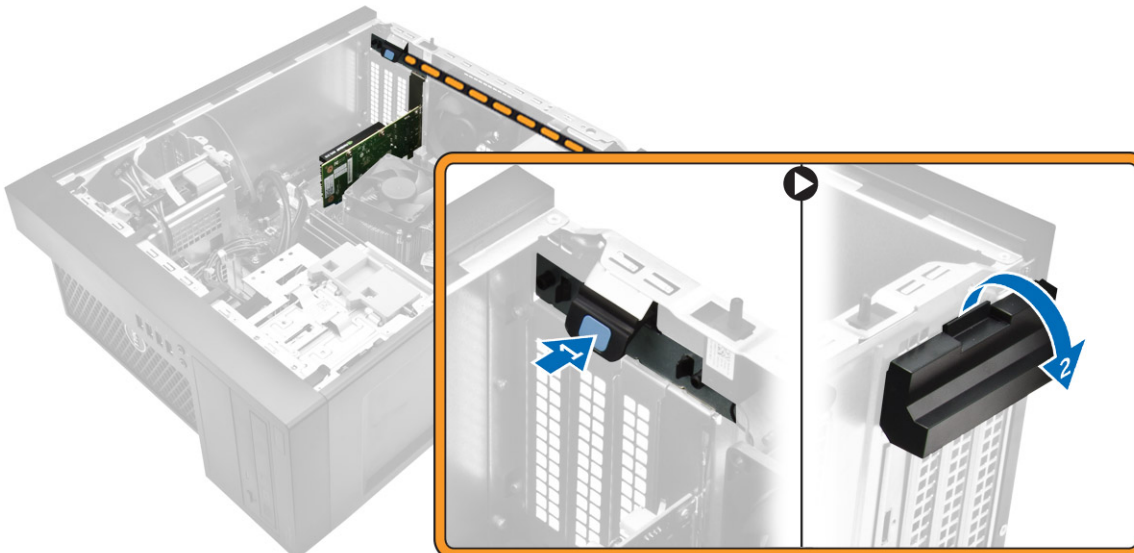


## Installing the speaker

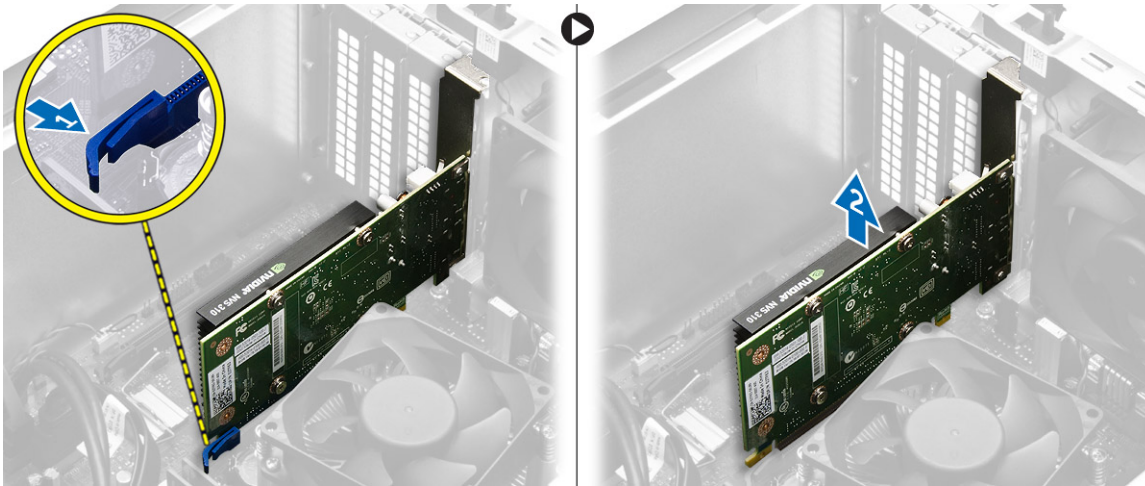
- 1 Slide the speaker module into the slot to secure it.
- 2 Connect the speaker cable to the system board.
- 3 Install the [cover](#).
- 4 Follow the procedure in [After Working Inside Your Computer](#).

## Removing the expansion card

- 1 Follow the procedure in [Before Working Inside Your Computer](#).
- 2 Remove the [cover](#).
- 3 Press the securing tab to release the card retention lock [1, 2].



- 4 To remove the expansion card:
  - a Push the release latch to release the expansion card [1].
  - b Lift the card out of the connector [2].

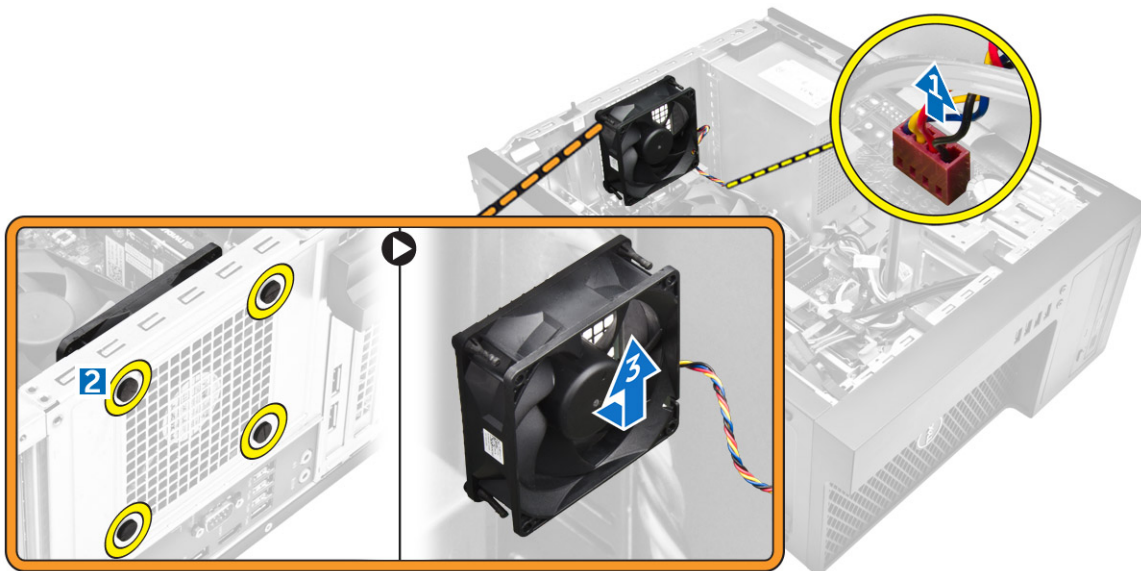


## Installing the expansion card

- 1 Insert the expansion card in the connector on the system board and press it until clicks into place.
- 2 Close the release latch.
- 3 Install the [cover](#).
- 4 Follow the procedure in [After Working Inside Your Computer](#).

## Removing the system fan

- 1 Follow the procedure in [Before Working Inside Your Computer](#).
- 2 Remove the [cover](#).
- 3 To remove the system fan:
  - a Disconnect the system fan cable from the system board [1].
  - b Stretch the grommets securing the fan to the computer to ease the removal of the fan [2].
  - c Slide and lift the system fan from the computer [3].

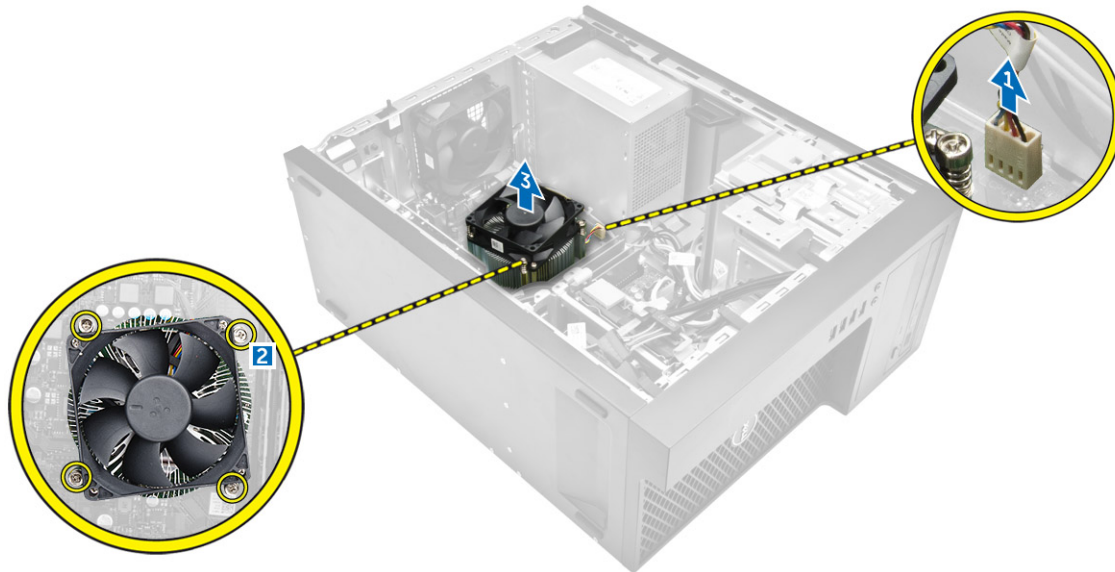


# Installing the system fan

- 1 Hold the system fan by the sides with the cable end facing the bottom of the computer.
- 2 Pass the four grommets through the chassis and slide outward along the groove to secure the system fan.
- 3 Connect the system fan cable to the system board.
- 4 Install the [cover](#).
- 5 Follow the procedure in [After Working Inside Your Computer](#).

# Removing the heat sink assembly

- 1 Follow the procedure in [Before Working Inside Your Computer](#).
- 2 Remove the [cover](#).
- 3 To remove the heat sink assembly:
  - a Disconnect the heat sink cable from the system board [1].
  - b Loosen the captive screws in diagonal order [2].
  - c Lift the heat sink assembly away from the computer [3].



# Installing the heat sink assembly

- 1 Place the heat sink assembly on the processor.
- 2 Tighten the captive screws in diagonal order to secure the heat sink assembly to the computer.
- 3 Connect the heat sink cable to the system board.
- 4 Install the [cover](#).
- 5 Follow the procedure in [After Working Inside Your Computer](#).

# Removing the processor

- 1 Follow the procedure in [Before Working Inside Your Computer](#).
- 2 Remove the:
  - a [cover](#)
  - b [front bezel](#)
  - c [hard drive](#)
  - d [heat sink](#)

- 3 To remove the processor:
  - a Release the socket lever by pushing the lever down and out from under the tab on the processor shield [1].
  - b Lift the lever upward and lift the processor shield [2].
  - c Lift the processor out of the socket [3].

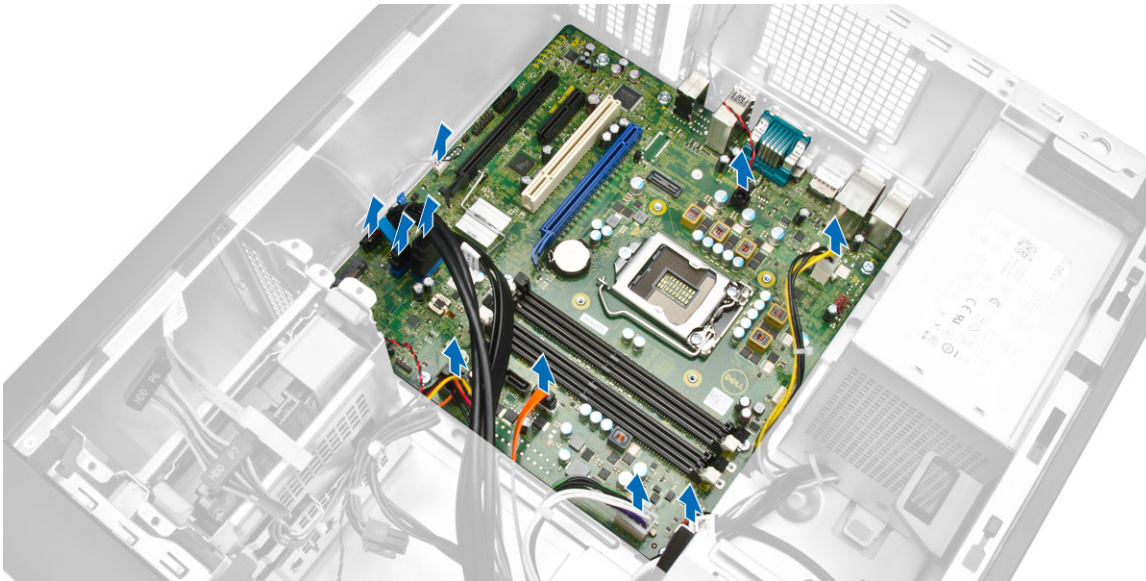


## Installing the processor

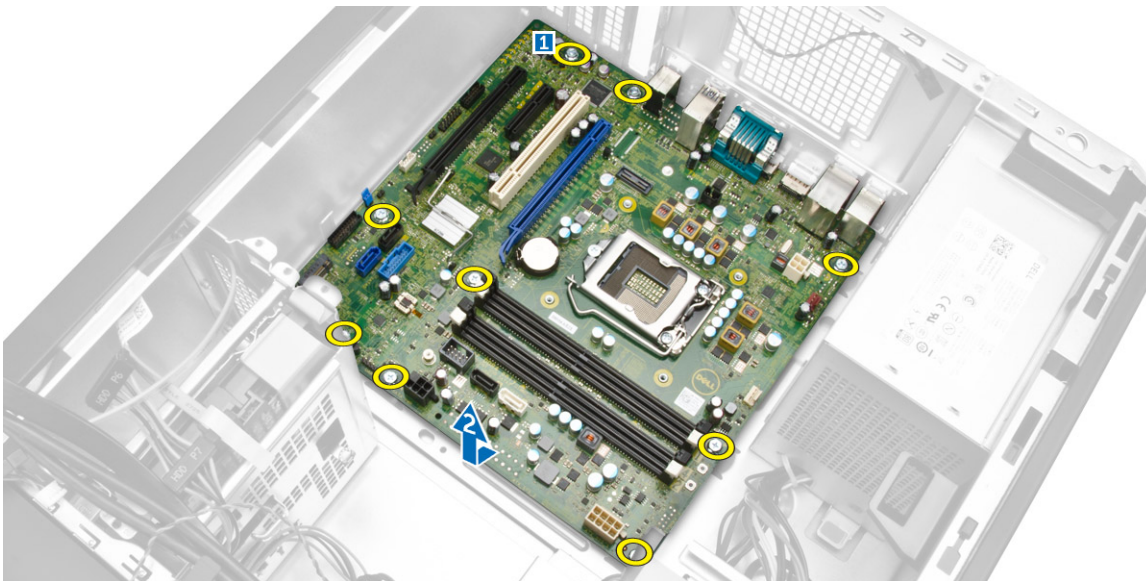
- 1 Align the processor with the socket keys.
- 2 Align the pin-1 indicator of the processor with the triangle on the socket.
- 3 Place the processor on the socket such that the slots on the processor align with the socket keys.
- 4 Close the processor shield by sliding it under the retention screw.
- 5 Lower the socket lever and push it under the tab to lock it.
- 6 Install the:
  - a [heat sink](#)
  - b [hard drive](#)
  - c [front bezel](#)
  - d [cover](#)
- 7 Follow the procedure in [After Working Inside Your Computer](#).

## Removing the system board

- 1 Follow the procedure in [Before Working Inside Your Computer](#).
- 2 Remove the:
  - a [cover](#)
  - b [front bezel](#)
  - c [memory module](#)
  - d [hard drive](#)
  - e [expansion card\(s\)](#)
  - f [heat sink](#)
- 3 Disconnect all the cables connected to the system board.



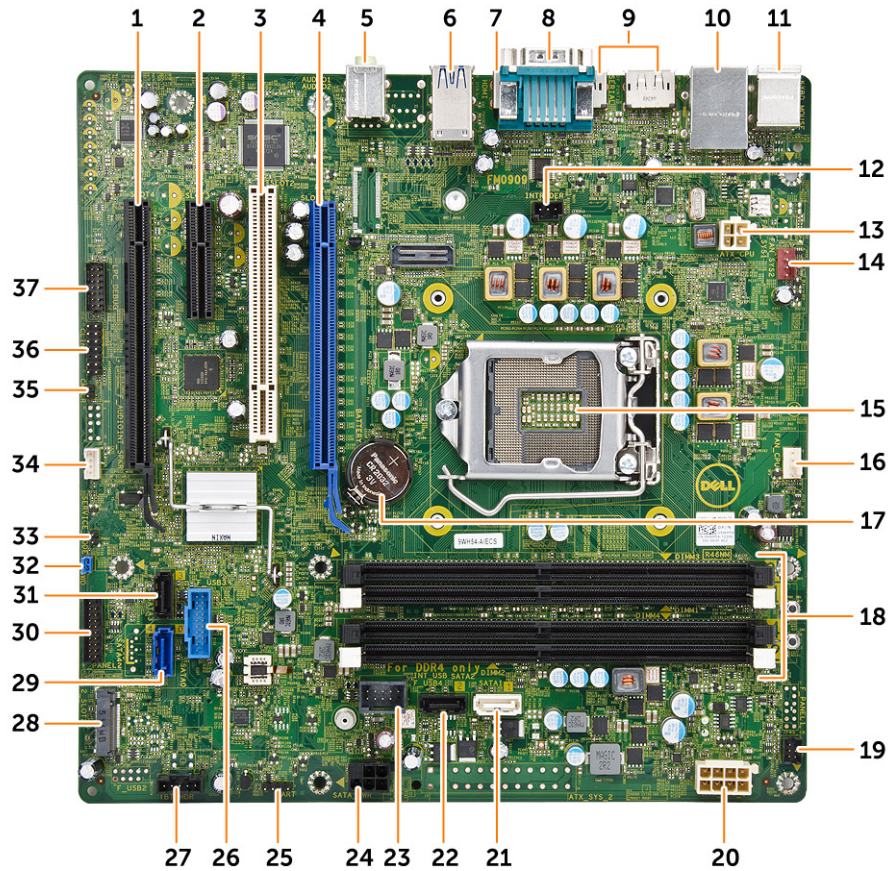
- 4 To remove the system board:
  - a Remove the screws that secure the system board to the computer [1].
  - b Slide the system board and lift it away from the computer [2].



## Installing the system board

- 1 Align the system board to the port connectors on the back of the chassis and place the system board in the chassis.
- 2 Tighten the screws securing the system board to the chassis.
- 3 Connect the cables to the system board.
- 4 Install the:
  - a [heat sink](#)
  - b [expansion card\(s\)](#)
  - c [hard drive](#)
  - d [memory module](#)
  - e [front bezel](#)
  - f [cover](#)
- 5 Follow the procedure in [After Working Inside Your Computer](#).

# System board components



**Figure 1. Components of the system board**

- |    |                                    |    |  |
|----|------------------------------------|----|--|
| 1  | PCI express x16 slot (wired as x4) | 2  | PCI express x4 slot                                |
| 3  | PCI slot                           | 4  | PCI express x16 Gen 3 slot                         |
| 5  | line-in connector                  | 6  | USB 3.0 connector                                  |
| 7  | HDMI connector                     | 8  | serial port connector                              |
| 9  | 2 x DisplayPort connector          | 10 | USB 2.0 with network connector                     |
| 11 | keyboard/mouse connector           | 12 | intrusion switch connector                         |
| 13 | P2 power connector                 | 14 | system fan connector                               |
| 15 | CPU socket                         | 16 | CPU fan connector                                  |
| 17 | coin cell battery                  | 18 | memory slot  |
| 19 | front power switch connector       | 20 | 8-pin power connector                              |
| 21 | SATA 1 connector                   | 22 | SATA 2 connector                                   |
| 23 | internal USB connector             | 24 | hard drive and optical drive power cable connector |
| 25 | OS debug header for debug          | 26 | USB 3.0 connector                                  |
| 27 | Thunderbolt header                 | 28 | M.2 SSD slot                                       |
| 29 | SATA 0 connector                   | 30 | front I/O connector                                |
| 31 | SATA 3 connector                   | 32 | password reset jumper                              |
| 33 | service Mode jumper connector      | 34 | speaker connector                                  |
| 35 | CMCLR jumper                       | 36 | CLINK header                                       |





# System Setup

System Setup enables you to manage your computer hardware and specify BIOS level options. From the System Setup, you can:

- Change the NVRAM settings after you add or remove hardware
- View the system hardware configuration
- Enable or disable integrated devices
- Set performance and power management thresholds
- Manage your computer security

Topics:

- [Boot Sequence](#)
- [Navigation keys](#)
- [System Setup options](#)
- [Updating the BIOS](#)
- [Jumper settings](#)
- [System and setup password](#)

## Boot Sequence

Boot Sequence allows you to bypass the System Setup-defined boot device order and boot directly to a specific device (for example: optical drive or hard drive). During the Power-on Self Test (POST), when the Dell logo appears, you can:

- Access System Setup by pressing F2 key
- Bring up the one-time boot menu by pressing F12 key

The one-time boot menu displays the devices that you can boot from including the diagnostic option. The boot-menu options are:

**Table 1. Boot Sequence**

Option	Description
<b>Legacy Boot</b>	<ul style="list-style-type: none"> <li>• ST2000DM001-1ER164</li> <li>• CD/DVD/CD-RW Drive</li> <li>• Onboard NIC</li> </ul>
<b>UEFI Boot</b>	Windows Boot Manager
<b>Other options</b>	<ul style="list-style-type: none"> <li>• BIOS Setup</li> <li>• BIOS Flash Update</li> <li>• Diagnostics</li> <li>• Intel (R) Management Engine BIOS Extension (MEBx)</li> <li>• Change Boot Mode Settings</li> </ul>

The boot sequence screen also displays the option to access the System Setup screen.

# Navigation keys

The following table displays the system setup navigation keys.

**NOTE:** For most of the System Setup options, changes that you make are recorded but do not take effect until you restart the system.

**Table 2. Navigation keys**

Keys	Navigation
Up arrow	Moves to the previous field.
Down arrow	Moves to the next field.
Enter	Allows you to select a value in the selected field (if applicable) or follow the link in the field.
Spacebar	Expands or collapses a drop-down list, if applicable.
Tab	Moves to the next focus area.
	<b>NOTE:</b> For the standard graphics browser only.
Esc	Moves to the previous page till you view the main screen. Pressing Esc in the main screen displays a message that prompts you to save any unsaved changes and restarts the system.
F1	Displays the System Setup help file.

# System Setup options

**NOTE:** Depending on your computer and its installed devices, the items listed in this section may or may not appear.

**Table 3. General**

Option	Description
<b>System Information</b>	This section lists the primary hardware features of your computer. <ul style="list-style-type: none"><li>System Information</li><li>Memory Configuration</li><li>PCI Information</li><li>Processor Information</li><li>Device Information</li></ul>
<b>Boot Sequence</b>	Allows you to change the order in which the computer attempts to find an operating system. <ul style="list-style-type: none"><li>Diskette Drive</li><li>USB Storage Device</li><li>CD/DVD/CD-RW Drive</li><li>Onboard NIC</li><li>Internal HDD</li></ul>
<b>Boot List Options</b>	Allows you to change the boot list option. <ul style="list-style-type: none"><li>Legacy</li><li>UEFI</li></ul>
<b>Advanced Boot Options</b>	Allows you to Enable Legacy Option ROMs <ul style="list-style-type: none"><li><b>Enable Legacy Option ROMs</b> (Default: not enabled)</li></ul>

Option	Description
<b>Date/Time</b>	Allows you to set the date and time. The changes to the system date and time takes effect immediately.

**Table 4. System configuration**

Option	Description
<b>Integrated NIC</b>	<p>Allows you to configure the integrated network controller. The options are:</p> <ul style="list-style-type: none"> <li>· Enable UEFI Network Stack</li> <li>· Disabled</li> </ul> <p><b>i</b>   <b>NOTE: You can use the Disabled option, only if Active Management Technology (AMT) option is disabled.</b></p> <ul style="list-style-type: none"> <li>· Enabled</li> <li>· <b>Enabled w/PXE</b> (Default)</li> <li>· Enabled w/Cloud Desktop</li> </ul>
<b>Serial Port</b>	<p>Identifies and defines the serial port settings. You can set the serial port to:</p> <ul style="list-style-type: none"> <li>· Disabled</li> <li>· <b>COM1</b> (Default)</li> <li>· COM2</li> <li>· COM3</li> <li>· COM4</li> </ul> <p><b>i</b>   <b>NOTE: The operating system may allocate resources even if the setting is disabled.</b></p>
<b>SATA Operation</b>	<p>Allows you to configure the internal SATA hard-drive controller. The options are:</p> <ul style="list-style-type: none"> <li>· Disabled</li> <li>· AHCI</li> <li>· <b>RAID On</b> (Default)</li> </ul>
<b>Drives</b>	<p>Allows you to configure the SATA drives on board. The options are:</p> <ul style="list-style-type: none"> <li>· SATA-0</li> <li>· SATA-1</li> <li>· SATA-2</li> <li>· M.2 PCIe SSD-0</li> </ul> <p>Default Setting: <b>All drives are enabled.</b></p>
<b>SMART Reporting</b>	<p>This field controls if the hard drive errors for the integrated drives are reported during system startup. This technology is part of the SMART (Self Monitoring Analysis and Reporting Technology) specification.</p> <ul style="list-style-type: none"> <li>· <b>Enable SMART Reporting</b> - This option is disabled by default.</li> </ul>
<b>USB Configuration</b>	<p>Allows you to enable or disable the USB configuration. The options are:</p> <ul style="list-style-type: none"> <li>· Enable Boot Support</li> <li>· Enable Front USB Ports</li> <li>· Enable rear USB Ports</li> </ul>
<b>Front USB Configuration</b>	<p>Allows you to enable or disable the Front USB configuration. The options are:</p> <ul style="list-style-type: none"> <li>· Front Port 1</li> <li>· Front Port 2</li> </ul>

Option	Description
	<ul style="list-style-type: none"> <li>Front Port 3</li> <li>Front Port 4</li> </ul>
<b>Rear USB Configuration</b>	<p>Allows you to enable or disable the rear USB configuration. The options are:</p> <ul style="list-style-type: none"> <li>Rear Port 1</li> <li>Rear Port 2</li> <li>Rear Port 3</li> <li>Rear Port 4</li> <li>Rear Port 5</li> <li>Rear Port 6</li> </ul>
<b>Thunderbolt</b>	<p>Allows you to enable or disable Thunderbolt device support capability. The options are:</p> <ul style="list-style-type: none"> <li><b>Enabled</b> (Default)</li> <li>No Security</li> <li>User Configuration</li> <li>Secure Connect</li> <li>Display Port Only</li> </ul>
<b>USB PowerShare</b>	<p>Allows you to enable or disable USB PowerShare.  <b>Enable USB PowerShare</b> -This option is disabled by default.</p>
<b>Audio</b>	<p>Allows you enable or disable the audio feature.</p> <p><b>Enable Audio</b> (Default)</p> <ul style="list-style-type: none"> <li>Enable Microphone</li> <li>Enable Internal Speaker</li> </ul>
<b>Miscellaneous devices</b>	<p>Allows you to enable or disable various on board devices.</p> <ul style="list-style-type: none"> <li><b>Enable Media Card</b> (Default)</li> <li>Disable Media Card</li> </ul>

Table 5. Video

Option	Description
<b>Primary Display</b>	<p>Allows you to configure primary video controller when there are multiple controllers available. The options are:</p> <ul style="list-style-type: none"> <li><b>Auto</b> (Default)</li> <li>Intel HD Graphics</li> </ul>

Table 6. Security

Option	Description
<b>Strong Password</b>	<p>Allows you to enforce the option to always set strong passwords.  Default Setting: <b>Enable Strong Password</b> is not selected.</p>
<b>Password Configuration</b>	<p>Allows you to define the length of the Admin password. Min = 4 , Max = 32</p>
<b>Password Bypass</b>	<p>Allows you to enable or disable the permission to bypass the System password, when it is set. The options are:</p>

Option	Description
	<ul style="list-style-type: none"> <li>• <b>Disabled</b> (Default)</li> <li>• Reboot bypass</li> </ul>
<b>Password Change</b>	<p>Allows you to enable the disable permission to the System passwords when the administrator password is set.</p> <p>Default Setting: <b>Allow Non-Admin Password Changes</b> is selected</p>
<b>TPM 1.2 Security</b>	<p>Allows you to control whether the Trusted Platform Module (TPM) is visible to the operating system. The options are:</p> <ul style="list-style-type: none"> <li>• <b>TPM On</b> (Default)</li> <li>• PPI Bypass for Enable Commands</li> <li>• PPI Bypass for Disable Commands</li> <li>• Disabled</li> <li>• Enabled</li> </ul>
<b>Computrace (R)</b>	<p>Allows you to activate or disable the optional Computrace software. The options are:</p> <ul style="list-style-type: none"> <li>• <b>Deactivate</b> (Default)</li> <li>• Disable</li> <li>• Activate</li> </ul>
<b>Chassis Intrusion</b>	<p>Allows you to enable or disable the chassis intrusion feature. The options are:</p> <ul style="list-style-type: none"> <li>• <b>Disabled</b> (Default)</li> <li>• Enabled</li> <li>• On-Silent</li> </ul>
<b>CPU XD Support</b>	<p>Allows you to enable the Execute Disable mode of the processor.</p> <ul style="list-style-type: none"> <li>• <b>Enable CPU XD Support</b> (Default)</li> </ul>
<b>OROM Keyboard Access</b>	<p>Allows you to determine whether users are able to enter Option ROM Configuration screens via hotkeys during boot. The options are:</p> <ul style="list-style-type: none"> <li>• <b>Enable</b> (Default)</li> <li>• One Time Enable</li> <li>• Disable</li> </ul>
<b>Admin Setup Lockout</b>	<p>Allows you to prevent users from entering Setup when an administrator password is set.</p> <ul style="list-style-type: none"> <li>• Enable Admin Setup Lockout</li> </ul> <p>Default Setting: The option is disabled.</p>

**Table 7. Secure Boot**

Option	Description
<b>Secure Boot Enable</b>	<p>Allows you to enable or disable the Secure Boot Feature. The options are:</p> <ul style="list-style-type: none"> <li>• Disabled</li> <li>• <b>Enabled</b> (Default)</li> </ul>
<b>Expert Key Management</b>	<p>Allows you to enable or disable Custom Mode Key Management.</p> <ul style="list-style-type: none"> <li>• Enable Custom Mode (This option is not enabled by default)</li> </ul> <p>If Enabled, the options are:</p>

Option	Description
	<ul style="list-style-type: none"> <li>· PK</li> <li>· KEK</li> <li>· db</li> <li>· dbx</li> </ul>

**Table 8. Intel Software Guard Extensions**

Option	Description
<b>Intel SGX Enable</b>	<p>Allows you to enable or disable Intel Software Guard Extensions. The options are:</p> <ul style="list-style-type: none"> <li>· <b>Disabled</b> (Default)</li> <li>· Enabled</li> </ul>
<b>Enclave Memory Size</b>	<p>Allows you to change the Intel Software Guard Extensions Enclave Reserve Memory size. The options are:</p> <ul style="list-style-type: none"> <li>· 32 MB</li> <li>· 64 MB</li> <li>· 128 MB</li> </ul>

**Table 9. Performance**

Option	Description
<b>Multi Core Support</b>	<p>This field specifies whether the processor will have one or all cores enabled. The performance of some applications will improve with the additional cores. This option is enabled by default. Allows you to enable or disable multi-core support for the processor. The options are:</p> <ul style="list-style-type: none"> <li>· <b>All</b> (Default)</li> <li>· 1</li> <li>· 2</li> <li>· 3</li> </ul> <p><b>NOTE:</b></p> <ul style="list-style-type: none"> <li>· The options displayed could be different depending on the installed processor.</li> <li>· The options depend on the number of cores supported by the installed processor (All, 1, 2, N-1 for N-Core Processors)</li> </ul>
<b>Intel SpeedStep</b>	<p>Allows you to enable or disable the Intel SpeedStep feature. Default Setting: <b>Enable Intel SpeedStep</b></p>
<b>C-States Control</b>	<p>Allows you to enable or disable the additional processor sleep states. <b>C states</b> (This option is selected by default)</p>
<b>Limit CPUID Value</b>	<p>This field limits the maximum value the processor Standard CPUID Function will support.</p> <ul style="list-style-type: none"> <li>· <b>Enable CPUID Limit</b></li> </ul> <p>Default Setting: The option is disabled.</p>

**Table 10. Power management**

<b>Option</b>	<b>Description</b>
<b>AC Recovery</b>	<p>Specifies how the computer will respond when AC power is applied after a AC power loss. You can set the AC Recovery to:</p> <ul style="list-style-type: none"><li>· <b>Power Off</b> (Default)</li><li>· Power On</li><li>· Last Power State</li></ul>
<b>Auto On Time</b>	<p>Allows you to set the time at which the computer must turn on automatically. The options are:</p> <ul style="list-style-type: none"><li>· <b>Disabled</b> (Default)</li><li>· Every Day</li><li>· Weekdays</li><li>· Select Days</li></ul>
<b>Deep Sleep Control</b>	<p>Allows you to define the controls when Deep Sleep is enabled.</p> <ul style="list-style-type: none"><li>· <b>Disabled</b> (Default)</li><li>· Enabled in S5 only</li><li>· Enabled in S4 and S5</li></ul>
<b>Fan Control Override</b>	<p>Allows you to control the speed of the system fan. The options are:</p> <ul style="list-style-type: none"><li>· <b>Fan Control Override</b></li></ul> <p>Default Setting: The option is disabled.</p>
<b>USB Wake Support</b>	<p>Allows you to enable USB devices to wake the system from standby.</p> <ul style="list-style-type: none"><li>· <b>Enable USB Wake Support</b></li></ul> <p>Default Setting: The option is disabled.</p>
<b>Wake on LAN/WLAN</b>	<p>This option allows the computer to power up from the off state when triggered by a special LAN signal. Wake-up from the Standby state is unaffected by this setting and must be enabled in the operating system. This feature only works when the computer is connected to AC power supply.</p> <ul style="list-style-type: none"><li>· <b>Disabled</b> (Default)</li><li>· LAN Only</li><li>· WLAN Only</li><li>· LAN or WLAN</li><li>· LAN with PXE Boot</li></ul>
<b>Block Sleep</b>	<p>Allows you to block entering to sleep (S3 state) in OS Environment.</p> <p>Block Sleep (S3 State)</p> <p>This option is disabled by default.</p>
<b>Intel Ready Mode</b>	<p>This option allows you to enable the capability of Intel Ready Mode Technology.</p> <p>Enable Intel Ready Mode (this option is disabled by default)</p>

**Table 11. POST behavior**

<b>Option</b>	<b>Description</b>
<b>Numlock LED</b>	Allows you to specify if the NumLock function is enabled when the system boots. This option is enabled by default.
<b>MEBx Hotkey</b>	Allows you to specify whether the MEBx Hotkey function should be enabled when the system boots. This option is enabled by default.
<b>Keyboard Errors</b>	Specifies whether keyboard related errors are reported when it boots. This option is enabled by default.

**Table 12. Virtualization support**

<b>Option</b>	<b>Description</b>
<b>Virtualization</b>	<p>This option specifies whether a Virtual Machine Monitor (VMM) can utilize the additional hardware capabilities provided by Intel Virtualization technology.</p> <ul style="list-style-type: none"><li>· <b>Enable Intel Virtualization Technology</b> - This option is enabled by default.</li></ul>
<b>VT for Direct I/O</b>	<p>Enables or disables the Virtual Machine Monitor (VMM) from utilizing the additional hardware capabilities provided by Intel Virtualization technology for direct I/O.</p> <ul style="list-style-type: none"><li>· <b>Enable VT for Direct I/O</b> - This option is enabled by default.</li></ul>
<b>Trusted Execution</b>	<p>Allows you to specify whether a Measured Virtual Machine Monitor (MVMM) can utilize the additional hardware capabilities provided by Intel Trusted Execution Program.</p> <ul style="list-style-type: none"><li>· <b>Trusted Execution</b> - This option is disabled by default.</li></ul>

**Table 13. Maintenance**

<b>Option</b>	<b>Description</b>
<b>Service Tag</b>	Displays the service tag of your computer.
<b>Asset Tag</b>	Allows you to create a system asset tag if an asset tag is not already set. This option is not set by default.
<b>SERR Messages</b>	Allows you to control the SERR message mechanism. This option is not set by default. Some graphics cards require that the SERR message mechanism be disabled.
<b>BIOS Downgrade</b>	Allows you to control the flashing of the system firmware to previous revisions. This option is enabled by default.
<b>Data Wipe</b>	Allows you to securely erase data from all internal storage devices. The option is disabled by default.
<b>BIOS Recovery</b>	Allows you to recover from certain corrupted BIOS conditions using a recovery file. This option is enabled by default.

**Table 14. Cloud desktop**

<b>Option</b>	<b>Description</b>
<b>Server Lookup Method</b>	<p>Allows you to specify how the Cloud Desktop software will lookup server addresses. The options are:</p> <ul style="list-style-type: none"><li>· Static IP</li><li>· <b>DNS</b> (default)</li></ul>
<b>Server Name</b>	Allows you to specify the Server Name of the server.



Option	Description
<b>Server IP Address</b>	Specifies the primary static IP address of the Cloud Desktop Server with which the client software communicates. The default setting is 255.255.255.255
<b>Server Port</b>	Allows you to specify the primary IP port of the Cloud Desktop with which the client software communicates. The default setting is 06910.
<b>Client Address Method</b>	Allows you to specify how the client will obtain its IP address. The options are: <ul style="list-style-type: none"> <li>· Static IP</li> <li>· <b>DHCP</b> (default)</li> </ul>
<b>Client IP Address</b>	Specifies the Static IP address of the client. The default setting is 255.255.255.255
<b>Client Subnet Mask</b>	Specifies the subnet mask of the client. The default setting is 255.255.255.255
<b>Client Gateway</b>	Specifies the gateway of the client. The default setting is 255.255.255.255
<b>DNS IP Address</b>	Specifies the DNS IP address of the client. The default setting is 255.255.255.255
<b>Domain Name</b>	Specifies the Domain name of the client.
<b>Advanced</b>	Allows you to enable Verbose Mode for advanced debugging. By default this option is disabled.

**Table 15. System Logs**

Option	Description
<b>BIOS events</b>	Displays the system event log and allows you to clear the log. <ul style="list-style-type: none"> <li>· Clear Log</li> </ul>

**Table 16. Engineering configurations**

Option	Description
<b>ASPM</b>	Allows you to set the Active State Power Management level: <ul style="list-style-type: none"> <li>· <b>Auto</b> (Default)</li> <li>· Disabled</li> <li>· L1 Only</li> </ul>

## Updating the BIOS

It is recommended to update your BIOS (System Setup), on replacing the system board or if an update is available. For laptops, ensure that your computer battery is fully charged and connected to a power outlet

- 1 Restart the computer.
- 2 Go to **Dell.com/support**.
- 3 Enter the **Service Tag** or **Express Service Code** and click **Submit**.

**NOTE:** To locate the Service Tag, click **Where is my Service Tag?**

**NOTE:** If you cannot find your Service Tag, click **Detect My Product**. Proceed with the instructions on screen.

- 4 If you are unable to locate or find the Service Tag, click the Product Category of your computer.
- 5 Choose the **Product Type** from the list.
- 6 Select your computer model and the **Product Support** page of your computer appears.
- 7 Click **Get drivers** and click **View All Drivers**.  
The Drivers and Downloads page opens.

- 8 On the Drivers and Downloads screen, under the **Operating System** drop-down list, select **BIOS**.
- 9 Identify the latest BIOS file and click **Download File**.  
You can also analyze which drivers need an update. To do this for your product, click **Analyze System for Updates** and follow the instructions on the screen.
- 10 Select your preferred download method in the **Please select your download method below** window, click **Download File**.  
The **File Download** window appears.
- 11 Click **Save** to save the file on your computer.
- 12 Click **Run** to install the updated BIOS settings on your computer.  
Follow the instructions on the screen.

**NOTE:** It is recommended not to update the BIOS version for more than 3 revisions. For example: If you want to update the BIOS from 1.0 to 7.0, then install version 4.0 first and then install version 7.0.

## Jumper settings

To change a jumper setting, pull the plug off its pin(s) and carefully fit it down onto the pin(s) indicated on the system board.

**Table 17. Jumper settings**

Jumper	Setting	Description
PSWD	Default	Short: Default
		Open: Clear Password
RTCRST	Default	Open: Default
		Short: Real-time clock reset. Can be used for troubleshooting
SERVICE_MODE	Default	Open: Default
		Short: ME disable

## System and setup password

You can create a system password and a setup password to secure your computer.

Password type	Description
System password	Password that you must enter to log on to your system.
Setup password	Password that you must enter to access and make changes to the BIOS settings of your computer.

**CAUTION:** The password features provide a basic level of security for the data on your computer.

**CAUTION:** Anyone can access the data stored on your computer if it is not locked and left unattended.

**NOTE:** Your computer is shipped with the system and setup password feature disabled.

## Assigning a system password and setup password

You can assign a new **System Password** and/or **Setup Password** or change an existing **System Password** and/or **Setup Password** only when **Password Status** is **Unlocked**. If the Password Status is **Locked**, you cannot change the System Password.

**NOTE:** If the password jumper is disabled, the existing System Password and Setup Password are deleted and you need not provide the system password to log on to the computer.

To enter a system setup, press <F2> immediately after a power-on or re-boot.

- 1 In the **System BIOS** or **System Setup** screen, select **System Security** and press Enter.  
The **System Security** screen appears.
- 2 In the **System Security** screen, verify that **Password Status** is **Unlocked**.
- 3 Select **System Password**, enter your system password, and press Enter or Tab.  
Use the following guidelines to assign the system password:
  - A password can have up to 32 characters.
  - The password can contain the numbers 0 through 9.
  - Only lower case letters are valid, upper case letters are not allowed.
  - Only the following special characters are allowed: space, ("), (+), (,), (-), (.), (/), (:), ([), (\), (]), (^).Re-enter the system password when prompted.
- 4 Type the system password that you entered earlier and click **OK**.
- 5 Select **Setup Password**, type your system password and press Enter or Tab.  
A message prompts you to re-type the setup password.
- 6 Type the setup password that you entered earlier and click **OK**.
- 7 Press Esc and a message prompts you to save the changes.
- 8 Press Y to save the changes.  
The computer reboots.

## Deleting or changing an existing system and or setup password

Ensure that the **Password Status** is Unlocked (in the System Setup) before attempting to delete or change the existing System and/or Setup password. You cannot delete or change an existing System or Setup password, if the **Password Status** is Locked.  
To enter the System Setup, press F2 immediately after a power-on or reboot.

- 1 In the **System BIOS** or **System Setup** screen, select **System Security** and press Enter.  
The **System Security** screen is displayed.
- 2 In the **System Security** screen, verify that **Password Status** is **Unlocked**.
- 3 Select **System Password**, alter or delete the existing system password and press Enter or Tab.
- 4 Select **Setup Password**, alter or delete the existing setup password and press Enter or Tab.  
**NOTE:** If you change the System and/or Setup password, re-enter the new password when prompted. If you delete the System and/or Setup password, confirm the deletion when prompted.
- 5 Press Esc and a message prompts you to save the changes.
- 6 Press Y to save the changes and exit from System Setup.  
The computer reboots.

## Disabling a system password

The system's software security features include a system password and a setup password. The password jumper disables any password(s) currently in use.

**NOTE:** You can also use the following steps to disable a forgotten password.

- 1 Follow the procedures in *Before Working on Your Computer*.
- 2 Remove the cover.
- 3 Identify the PSWD jumper on the system board.
- 4 Remove the PSWD jumper from the system board.

**NOTE:** The existing passwords are not disabled (erased) until the computer boots without the jumper.

5 Install the cover.

 **NOTE: If you assign a new system and/or setup password with the PSWD jumper installed, the system disables the new password(s) the next time it boots.**

6 Connect the computer to the electrical outlet and power-on the computer.

7 Power-off the computer and disconnect the power cable from the electrical outlet.

8 Remove the cover.

9 Replace the PSWD jumper on the system board.

10 Install the cover.

11 Follow the procedures in *After Working on Your Computer*.

12 Power-on the computer.

13 Go to the system setup, and assign a new system or setup password. See *Setting up a System Password*.

# Diagnostics

If you experience a problem with your computer, run the ePSA diagnostics before contacting Dell for technical assistance. The purpose of running diagnostics is to test your computer's hardware without requiring additional equipment or risking data loss. If you are unable to fix the problem yourself, service and support personnel can use the diagnostics results to help you solve the problem.

Topics:

- [Enhanced Pre-Boot System Assessment — ePSA diagnostics](#)
- [Troubleshooting your computer](#)

## Enhanced Pre-Boot System Assessment — ePSA diagnostics

The ePSA diagnostics (also known as system diagnostics) performs a complete check of your hardware. The ePSA is embedded with the BIOS and is launched by the BIOS internally. The embedded system diagnostics provides a set of options for particular devices or device groups allowing you to:

- Run tests automatically or in an interactive mode
- Repeat tests
- Display or save test results
- Run thorough tests to introduce additional test options to provide extra information about the failed device(s)
- View status messages that inform you if tests are completed successfully
- View error messages that inform you of problems encountered during testing

**⚠ CAUTION: Use the system diagnostics to test only your computer. Using this program with other computers may cause invalid results or error messages.**

**ℹ NOTE: Some tests for specific devices require user interaction. Always ensure that you are present at the computer terminal when the diagnostic tests are performed.**

## Troubleshooting your computer

You can troubleshoot your computer using indicators like diagnostic lights, beep codes, and error messages during the operation of the computer.

### Power LED diagnostics

The power button LED located on the front of the chassis also functions as a bicolored diagnostic LED. The diagnostic LED is only active and visible during the POST process. Once the operating system starts to load, it is no longer visible.

Amber LED blinking scheme – The pattern is 2 or 3 blinks followed by a short pause then x number of blinks up to 7. The repeated pattern has a long pause inserted in the middle. For example 2,3 = 2 amber blinks, short pause, 3 amber blinks followed by long pause then repeats.

**Table 18. Power LED diagnostics**

Amber LED state	White LED state	Description
off	off	system is OFF
off	blinking	system is in sleep state
blinking	off	power supply unit (PSU) failure
steady	off	PSU is working but failed to fetch code
off	steady	system is ON

Amber LED state	Description
-----------------	-------------

2,1	system board failure
2,2	system board, PSU or PSU cabling failure
2,3	system board, memory or CPU failure
2, 4	coin cell battery failure
2,5	corrupt BIOS
2,6	CPU configuration failure or CPU failure
2,7	memory modules are detected, but a memory failure
3,1	possible peripheral card or system board failure
3,2	possible USB failure
3,3	no memory modules are detected
3,4	possible system board error
3,5	memory modules are detected, but a memory configuration or compatibility error
3,6	possible system board resource and/or hardware failure
3,7	some other failure with messages on screen

## Beep code

The computer can emit a series of beeps during start-up if the display does not show errors or problems. These series of beeps, called beep codes, identify various problems. The delay between each beep is 300 ms, the delay between each set of beeps is 3 sec, and the beep sound lasts 300 ms. After each beep and each set of beeps, the BIOS should detect if the user presses the power button. If so, BIOS will jump out from looping and execute the normal shutdown process and power system.

Code	1-3-2
Cause	Memory failure

## Error messages

Error message	Description
---------------	-------------

Address mark not found	The BIOS found a faulty disk sector or could not find a particular disk sector.
------------------------	---

Error message	Description
Alert! Previous attempts at booting this system have failed at checkpoint [nnnn]. For help in resolving this problem, please note this checkpoint and contact Dell Technical Support.	The computer failed to complete the boot routine three consecutive times for the same error. Contact Dell and report the checkpoint code (nnnn) to the support technician
Alert! Security override Jumper is installed.	The MFG_MODE jumper has been set and AMT Management features are disabled until it is removed.
Attachment failed to respond	The floppy or hard drive controller cannot send data to the associated drive.
Bad command or file name	Ensure that you have spelled the command correctly, put spaces in the proper place, and used the correct pathname.
Bad error-correction code (ECC) on disk read	The floppy or hard drive controller detected an uncorrectable read error.
Controller has failed	The hard drive or the associated controller is defective.
Data error	The floppy or hard drive cannot read the data. For the Windows operating system, run the chkdsk utility to check the file structure of the floppy or hard drive. For any other operating system, run the appropriate corresponding utility.
Decreasing available memory	One or more memory modules may be faulty or improperly seated. Re-install the memory modules and, if necessary, replace them.
Diskette drive 0 seek failure	A cable may be loose or the computer configuration information may not match the hardware configuration.
Diskette read failure	The floppy disk may be defective or a cable may be loose. If the drive access light turns on, try a different disk.
Diskette subsystem reset failed	The floppy drive controller may be faulty.
Gate A20 failure	One or more memory modules may be faulty or improperly seated. Reinstall the memory modules and, if necessary, replace them.
General failure	The operating system is unable to carry out the command. This message is usually followed by specific information—for example, <b>Printer out of paper</b> . Take the appropriate action to resolve the problem.
Hard-disk drive configuration error	The hard drive failed initialization.
Hard-disk drive controller failure	The hard drive failed initialization.
Hard-disk drive failure	The hard drive failed initialization.
Hard-disk drive read failure	The hard drive failed initialization.
Invalid configuration information-please run SETUP program	The computer configuration information does not match the hardware configuration.




<b>Error message</b>	<b>Description</b>
<b>Invalid Memory configuration, please populate DIMM1</b>	DIMM1 slot does not recognize a memory module. The module should be re-seated or installed.
<b>Keyboard failure</b>	A cable or connector may be loose, or the keyboard or keyboard/mouse controller may be faulty.
<b>Memory address line failure at address, read value expecting value</b>	A memory module may be faulty or improperly seated. Reinstall the memory modules and, if necessary, replace them.
<b>Memory allocation error</b>	The software you are attempting to run is conflicting with the operating system, another program, or a utility.
<b>Memory data line failure at address, read value expecting value</b>	A memory module may be faulty or improperly seated. Reinstall the memory modules and, if necessary, replace them.
<b>Memory double word logic failure at address, read value expecting value</b>	A memory module may be faulty or improperly seated. Reinstall the memory modules and, if necessary, replace them.
<b>Memory odd/even logic failure at address, read value expecting value</b>	A memory module may be faulty or improperly seated. Reinstall the memory modules and, if necessary, replace them.
<b>Memory write/read failure at address, read value expecting value</b>	A memory module may be faulty or improperly seated. Reinstall the memory modules and, if necessary, replace them.
<b>Memory size in CMOS invalid</b>	The amount of memory recorded in the computer configuration information does not match the memory installed in the computer.
<b>Memory tests terminated by keystroke</b>	A keystroke interrupted the memory test.
<b>No boot device available</b>	The computer cannot find the floppy disk or hard drive.
<b>No boot sector on hard-disk drive</b>	The computer configuration information in System Setup may be incorrect.
<b>No timer tick interrupt</b>	A chip on the system board might be malfunctioning.
<b>Non-system disk or disk error</b>	The floppy disk in drive A does not have a bootable operating system installed on it. Either replace the floppy disk with one that has a bootable operating system, or remove the floppy disk from drive A and restart the computer.
<b>Not a boot diskette</b>	The operating system is trying to boot to a floppy disk that does not have a bootable operating system installed on it. Insert a bootable floppy disk.
<b>Plug and play configuration error</b>	The computer encountered a problem while trying to configure one or more cards.
<b>Read fault</b>	The operating system cannot read from the floppy or hard drive, the computer could not find a particular sector on the disk, or the requested sector is defective.



Error message	Description
Requested sector not found	The operating system cannot read from the floppy or hard drive, the computer could not find a particular sector on the disk, or the requested sector is defective.
Reset failed	The disk re-set operation failed.
Sector not found	The operating system cannot locate a sector on the floppy or hard drive.
Seek error	The operating system cannot find a specific track on the floppy disk or hard drive.
Shutdown failure	A chip on the system board might be malfunctioning.
Time-of-day clock stopped	The battery might be dead.
Time-of-day not set-please run the System Setup program	The time or date stored in System Setup does not match the computer clock.
Timer chip counter 2 failed	A chip on the system board may be malfunctioning.
Unexpected interrupt in protected mode	The keyboard controller may be malfunctioning or a memory module may be loose.
WARNING: Dell's Disk Monitoring System has detected that drive [0/1] on the [primary/secondary] EIDE controller is operating outside of normal specifications. It is advisable to immediately back up your data and replace your hard drive by calling your support desk or Dell.	During initial startup, the drive detected possible error conditions. When your computer finishes booting, immediately back up your data and replace your hard drive (for installation procedures, see "Adding and Removing Parts" for your computer type). If no replacement drive is immediately available and the drive is not the only bootable drive, enter System Setup and change the appropriate drive setting to <b>None</b> . Then remove the drive from the computer.
Write fault	The operating system cannot write to the floppy or hard drive.
Write fault on selected drive	The operating system cannot write to the floppy or hard drive.

# Specifications

**NOTE:** Offerings may vary by region. For more information regarding the configuration of your computer in:

- Windows 10, click **Start**  > **Settings** > **System** > **About**.
- Windows 8.1 and Windows 8, click **Start**  > **PC Settings** > **PC and devices** > **PC Info**.
- Windows 7, click **Start** , right-click **My Computer**, and then select **Properties**.

**Table 19. Processor**

Feature	Specification
Processor type	<ul style="list-style-type: none"> <li>Intel Core i3 series</li> <li>Intel Core i5 series</li> <li>Intel Core i7 series</li> <li>Intel Xeon E3</li> </ul>
Total cache	Up to 8 MB cache depending on processor type

**Table 20. Memory**

Feature	Specification
Type	DDR4, NECC, and ECC
Speed	2133 MHz
Connectors	Four DIMM slots
Capacity	4 GB, 8 GB, and 16 GB
Minimum memory	4 GB
Maximum memory	64 GB

**Table 21. Video**

Feature	Specification
Integrated	<ul style="list-style-type: none"> <li>Intel HD Graphics 530 (Core i3/i5/i7)</li> <li>Intel HD Graphics P530 (Select Xeon)</li> </ul>
Discrete	PCI Express x16 graphics adapter

**Table 22. Audio**

Feature	Specification
Integrated	Two Channel High Definition Audio

**Table 23. Network**

Feature	Specification
Integrated	Intel I219LM Ethernet capable of 10/100/1000 Mb/s communication

**Table 24. System information**

Feature	Specification
System chipset	Intel C236 chipset
DMA channels	Two 8237 DMA controllers with seven independently programmable channels
Interrupt cevels	Integrated I/O APIC capability with 24 interrupts
BIOS chip (NVRAM)	16 MB

**Table 25. Expansion bus**

Feature	Specification
BustType	PCIe gen3 (x16), USB 2.0, and USB 3.0
Bus speed	PCI Express: <ul style="list-style-type: none"> <li>· x4-slot each direction speed – 4GB/s</li> <li>· x16-slot each direction speed – 16 GB/s</li> </ul> SATA: 1.5 Gbps, 3.0 Gbps, and 6 Gbps


**Table 26. Cards**

Feature	Specification
PCI	Up to one full-height card
PCI Express x4	Up to one full-height card
PCI-Express x16	Up to two full-height cards

**Table 27. Drives**

Feature	Specification			
Externally accessible (5.25-inch drive bay)	Two			
Internally accessible	<b>3.5-inch SATA drive bays</b>	<b>2.5-inch SATA drive bays</b>	<b>PCIe drive bay</b>	<b>M.2 SSD (optional)</b>
	Two	Four	One	One

**Table 28. External connectors**

Feature	Specification
Audio	
Front panel	One universal audio jack with microphone in and headphone connector
Back panel	One line-out connector
Network adapter	One RJ-45 connector
Serial	One 9-pin connector; 16550 C compatible
USB 2.0	Front panel: two Back panel: two
USB 3.0	Front panel: two Back panel: four
HDMI out	One
Video	<ul style="list-style-type: none"> <li>• 15-pin VGA connector</li> <li>• two 20-pin DisplayPort connectors</li> </ul>
	 <b>NOTE: Available video connectors may vary based on the graphics card selected.</b>

**Table 29. Internal connectors**

Feature	Specification
PCI 2.3 data width (maximum) - 32 bits	
Mini Tower	One 120-pin connector
PCI Express x4 data width (maximum) - four PCI Express lane	
Mini Tower	One 64-pin connector
PCI Express x16 (wired as x4) data width (maximum) - four PCI Express lanes	
Mini Tower	One 164-pin connector
PCI Express x16 data width (maximum) - 16 PCI Express lanes	
Serial ATA	
Mini Tower	Four 7-pin connectors
M.2 SSD	
Optional	Gen 3x4 Slot
Memory	Four 288-pin connectors
Internal USB	
Mini Tower	One 20-pin connector
System fan	One 4-pin connector
Front panel control	
Mini Tower	One 6-pin and two 20-pin connector
Mini Tower – thermal sensor	One 2-pin connector

Feature	Specification
Processor	One 1150-pin connector
Processor fan	One 4-pin connector
Service mode jumper	One 2-pin connector
Password clear jumper	One 2-pin connector
RTC reset jumper	One 2-pin connector
Internal speaker	One 4-pin connector
Intruder connector	One 3-pin connector
Power connector:	One 8-pin, one 4-pin,

**Table 30. Controls and lights**

Feature	Specification
Front of the computer	
Power button light	White light — Solid white light indicates power-on state; blinking white light indicates sleep state of the computer.
Drive activity light	White light — Blinking white light indicates that the computer is reading data from or writing data to the hard drive.
Back of the computer	
Link integrity light on integrated network adapter	Green — a 10 Mbps connection exists between the network and the computer.  Green — a 100 Mbps connection exists between the network and the computer.  Orange — a 1000 Mbps connection exists between the network and the computer.  Off (no light) — the computer is not detecting a physical connection to the network.
Network activity light on integrated network adapter	Yellow light — A blinking yellow light indicates that network activity is present.
Power supply diagnostic light	Green light — The power supply is turned on and is functional. The power cable must be connected to the power connector (at the back of the computer) and the electrical outlet.

**Table 31. Power**

Power	Wattage	Maximum heat dissipation	Voltage
Mini Tower:	290 W	989.00 BTU/hr	100 V AC to 240 V AC, 50 Hz to 60 Hz, 5.4 A
	365 W EPA	1245 BTU/hr	100 V AC to 240 V AC, 50 Hz to 60 Hz, 5.0 A

 **NOTE: Heat dissipation is calculated by using the power supply wattage rating.**

Coin cell battery	3 V CR2032 lithium coin cell
-------------------	------------------------------

**Table 32. Physical dimension**

Physical	Height	Width	Depth	Weight
Mini Tower	360.00 mm (14.17 inches)	175.00 mm (6.88 inches)	435.00 mm (17.12 inches)	11.70 kg (25.70 lb)

**NOTE:** The weight of your computer is based on a typical configuration and may vary with different configurations.

**Table 33. Environmental**

Feature	Specification
Temperature range	
Operating	5°C to 35°C (41°F to 95°F)
Storage	-40°C to 65°C (-40°F to 149°F)
Relative humidity (maximum)	
Operating	20 percent to 80 percent (non-condensing)
Storage	5 percent to 95 percent (non-condensing)
Maximum vibration	
Operating	0.26 GRMS
Storage	2.20 GRMS
Maximum shock	
Operating	40 G
Storage	105 G
Altitude	
Operating	-15.2 m to 3048 m (-50 to 10,000 ft)
Storage	-15.20 m to 10,668 m (-50 ft to 35,000 ft)
Airborne contaminant level	G1 or lower as defined by ANSI/ISA-S71.04-1985

# Contacting Dell

**NOTE:** If you do not have an active Internet connection, you can find contact information on your purchase invoice, packing slip, bill, or Dell product catalog.

Dell provides several online and telephone-based support and service options. Availability varies by country and product, and some services may not be available in your area. To contact Dell for sales, technical support, or customer service issues:

- 1 Go to **Dell.com/support**.
- 2 Select your support category.
- 3 Verify your country or region in the **Choose a Country/Region** drop-down list at the bottom of the page.
- 4 Select the appropriate service or support link based on your need.