

Copyright © 2011. Acer Incorporated.  
All Rights Reserved.

Acer Projector C120 Series User's Guide  
Original Issue: 9/2011

Changes may be made periodically to the information in this publication without obligation to notify any person of such revisions or changes. Such changes will be incorporated in new editions of this manual or supplementary documents and publications. This company makes no representations or warranties, either expressed or implied, with respect to the contents hereof and specifically disclaims the implied warranties of merchantability or fitness for a particular purpose.

Record the model number, serial number, purchase date and place of purchase information in the space provided below. The serial number and model number are recorded on the label affixed to your projector. All correspondence concerning your unit should include the serial number, model number and purchase information.

No part of this publication may be reproduced, stored in a retrieval system, or transmitted, in any form or by any means, electronically, mechanically, by photocopy, recording or otherwise, without the prior written permission of Acer Incorporated.

Acer Projector C120 Series

Model number: \_\_\_\_\_

Serial number: \_\_\_\_\_

Date of purchase: \_\_\_\_\_

Place of purchase: \_\_\_\_\_

Acer and the Acer logo are registered trademarks of Acer Incorporated. Other companies' product names or trademarks are used herein for identification purposes only and belong to their respective companies.

## Information for your safety and comfort

Read these instructions carefully. Keep this document for future reference. Follow all warnings and instructions marked on the product.

### Turning the product off before cleaning

Do not use liquid cleaners or aerosol cleaners. Use a damp cloth for cleaning.

### Caution for plug as disconnecting device

Observe the following guidelines when connecting and disconnecting power to the external power supply unit:

- Install the power supply unit before connecting the power cord to the AC power outlet.
- Unplug the power cord before removing the power supply unit from the projector.
- If the system has multiple sources of power, disconnect power from the system by unplugging all power cords from the power supplies.

### Caution for Accessibility

Be sure that the power outlet you plug the power cord into is easily accessible and located as close to the equipment operator as possible. When you need to disconnect power to the equipment, be sure to unplug the power cord from the electrical outlet.



.....  
**Warning:**

- Do not use this product near water.
- Do not place this product on an unstable cart, stand or table. If the product falls, it could be seriously damaged.
- Slots and openings are provided for ventilation to ensure reliable operation of the product and to protect it from overheating. These openings must not be blocked or covered. The openings should never be blocked by placing the product on a bed, sofa, rug or other similar surface.
- This product should never be placed near or over a radiator or heat register, or in a built-in installation unless proper ventilation is provided.
- Never push objects of any kind into this product through cabinet slots as they may touch dangerous voltage points or short-out parts that could result in a fire or electric shock. Never spill liquid of any kind onto or into the product.
- To avoid damage of internal components and to prevent battery leakage, do not place the product on a vibrating surface.
- Never use it under sporting, exercising, or any vibrating environment which will probably cause unexpected short current or damage rotor devices.

## Product servicing

Do not attempt to service this product yourself, as opening or removing covers may expose you to dangerous voltage points or other risks. Refer all servicing to qualified service personnel.

Refer servicing to qualified service personnel when:

- the power cord or plug is damaged, cut or frayed
- liquid was spilled into the product
- the product was exposed to rain or water
- the product has been dropped or the case has been damaged
- the product exhibits a distinct change in performance, indicating a need for service
- the product does not operate normally after following the operating instructions



.....  
**Note:** Adjust only those controls that are covered by the operating instructions, since improper adjustment of other controls may result in damage and will often require extensive work by a qualified technician to restore the product to normal condition.



.....  
**Warning!** For safety reasons, do not use non-compliant parts when adding or changing components. Consult your reseller for purchase options. Your device and its enhancements may contain small parts. Keep them out of the reach of small children.

## Additional safety information

- Do not look into the projector's lens when the light is on. The bright may hurt your eyes.
- Turn on the projector first and then signal sources
- Do not place the product in following environments:
  - Space that is poorly ventilated or confined. At least 50cm clearance from walls and free flow of air around the projector is necessary.
  - Locations where temperatures may become excessively high, such as inside of a car with all windows rolled up.
  - Locations where excessive humidity, dust, or cigarette smoke may contaminate optical components, shortening the life span and darkening the image.
  - Locations near fire alarms.
  - Locations with an ambient temperature above 40 °C/104 °F.
  - Locations where the altitudes are higher than 10000 feet.
- Unplug immediately if there is something wrong with your projector. Do not operate if smoke, strange noise or odor comes out of your projector. It might cause fire or electric shock. In this case, unplug immediately and contact your dealer.
- Do not keep using this product to break or drop it. In this case contact your dealer for inspection.
- Do not face the projector lens to the sun. It can lead to fire.
- Do not frequently turn off the main power abruptly or unplug the projector during operation.
- Clean the air filter frequently if have. The temperature inside may rise and cause damage when the filter/ventilation slots clogged with dirt or dust.
- Do not block the projector lens with any object when the projector is under operation as this could cause the object to become heated and deformed or even cause a fire.
- Do not attempt to disassemble this projector. There are dangerous high voltages inside which may hurt you. Refer servicing only to suitable qualified professional service personnel.
- Do not stand the projector on end vertically. It may cause the projector to fall over, causing injury or damage.

## Caution for Listening

To protect your hearing, follow these instructions.

- Increase the volume gradually until you can hear clearly and comfortably.
- Do not increase the volume level after your ears have adjusted.
- Do not listen to music at high volumes for extended periods.
- Do not increase the volume to block out noisy surroundings.
- Decrease the volume if you can't hear people speaking near you.

## Disposal instructions

Do not throw this electronic device into the trash when discarding. To minimize pollution and ensure utmost protection of the global environment, please recycle. For more information on the Waste from Electrical and Electronics Equipment (WEEE) regulations, visit <http://www.acer-group.com/public/Sustainability/sustainability01.htm>



# Regulations and safety notices

## FCC notice

This device has been tested and found to comply with the limits for a Class B digital device pursuant to Part 15 of the FCC rules. These limits are designed to provide reasonable protection against harmful interference in a residential installation. This device generates, uses, and can radiate radio frequency energy and, if not installed and used in accordance with the instructions, may cause harmful interference to radio communications.

However, there is no guarantee that interference will not occur in a particular installation. If this device does cause harmful interference to radio or television reception, which can be determined by turning the device off and on, the user is encouraged to try to correct the interference by one or more of the following measures:

- Reorient or relocate the receiving antenna.
- Increase the separation between the device and receiver.
- Connect the device into an outlet on a circuit different from that to which the receiver is connected.
- Consult the dealer or an experienced radio/television technician for help.

## Notice: Shielded cables

All connections to other computing devices must be made using shielded cables to maintain compliance with FCC regulations.

## Notice: Peripheral devices

Only peripherals (input/output devices, terminals, printers, etc.) certified to comply with the Class B limits may be attached to this equipment.

Operation with non-certified peripherals is likely to result in interference to radio and TV reception.

## Caution

Changes or modifications not expressly approved by the manufacturer could void the user's authority, which is granted by the Federal Communications Commission, to operate this device.

## Operation conditions

This device complies with Part 15 of the FCC Rules. Operation is subject to the following two conditions: (1) this device may not cause harmful interference, and (2) this device must accept any interference received, including interference that may cause undesired operation.

## Notice: Canadian users

This Class B digital apparatus complies with Canadian ICES-003.

## Remarque à l'intention des utilisateurs canadiens

Cet appareil numérique de la classe B est conforme à la norme NMB-003 du Canada.

## Declaration of Conformity for EU countries

Acer hereby declares that this projector series is in compliance with the essential requirements and other relevant provisions of Directive 1999/5/EC.

Compliant with Russian regulatory certification



ME61



UA.TR.002

## Radio device regulatory notice



.....  
**Note: The regulatory information below is for models with wireless LAN and/or Bluetooth only.**

### General

This product complies with the radio frequency and safety standards of any country or region in which it has been approved for wireless use.

Depending on configurations, this product may or may not contain wireless radio devices (such as wireless LAN and/or Bluetooth modules).

### Canada - Low-power license-exempt radio communication devices (RSS-210)

#### a. Common information

Operation is subject to the following two conditions:

1. This device may not cause interference, and
2. This device must accept any interference, including interference that may cause undesired operation of the device.

#### b. Operation in 2.4 GHz band

To prevent radio interference to the licensed service, this device is intended to be operated indoors and installation outdoors is subject to licensing.

### List of applicable countries

This device must be used in strict accordance with the regulations and constraints in the country of use. For further information, please contact the local office in the country of use. Please see <http://ec.europa.eu/enterprise/rte/implem.htm> for the latest country list.

# First things first

## Usage Notes

### Do:

- Turn off the product before cleaning.
- Use a soft cloth moistened with mild detergent to clean the display housing.
- Disconnect the power plug from AC outlet if the product is not being used for a long period of time.

### Don't:

- Use abrasive cleaners, waxes or solvents to clean the unit.
- Use under the following conditions:
  - In extremely hot, cold or humid environments.
  - In areas susceptible to excessive dust and dirt.
  - Near any appliance that generates a strong magnetic field.
  - Place in direct sunlight.

## Precautions

Follow all warnings, precautions and maintenance as recommended in this user's guide to maximize the life of your unit.

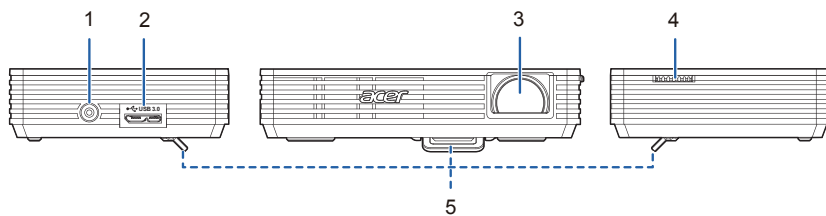


### Warning!

- Do not look into the projector's lens when the light is on. The bright may hurt your eyes.
- To reduce the risk of fire or electric shock, do not expose this product to rain or moisture.
- Please do not open or disassemble the product as this may cause electric shock.
- Turn on the projector first and then the signal sources.

# Introduction

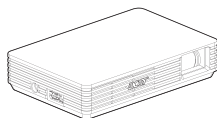
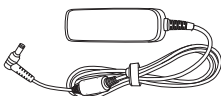
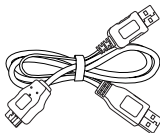



## Product Overview



#	Description	#	Description
1	DC IN connector	4	Focus Dial
2	USB 3.0 Micro B type	5	Foot Stand
3	Lens		

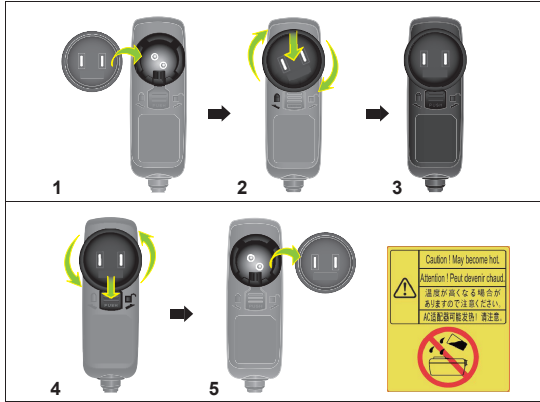
## Package Overview

This projector comes with all the items shown below. Check to make sure your unit is complete. Contact your dealer immediately if any thing is missing.

		
Projector	Power adaptor with AC Plug (Optional)	USB Y-cable
		
Pouch	User's Guide	Quick start guide

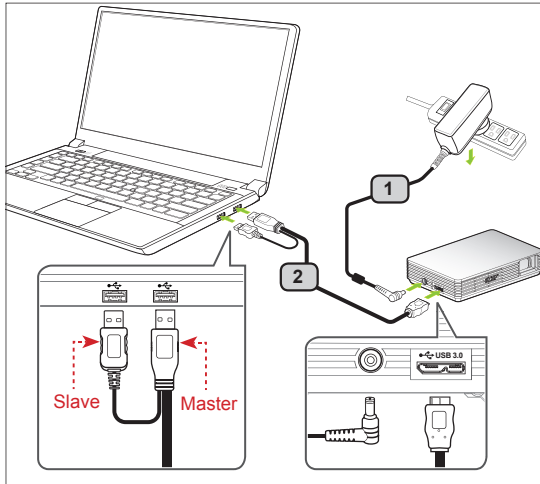
## Getting Started

### How to use the AC adapter plug



#	Description
1	Insert the plug. (illustration #1~3)
2	Change the plug. (illustration #4~6)

### Connecting the Projector



#	Description
1	Power adaptor with AC Plug
2	USB Y-cable



**Note:** To ensure the projector works well with your Notebook, please make sure the timing of the display mode is compatible with the projector.

**Note:** Please make sure USB cable plug well with notebook.

Connect the USB connector to your Notebook and plug the USB connector to the projector. If you want a brighter display, use power adaptor or plug two USB connector to your Notebook.



**Note:** It is recommended to use power adaptor to get best brightness.

**Note:** If no power adapter, it is recommended to plug in USB 3.0 if have or plug the two USB connectors on the same side of the Notebook to get the best performance. Please make sure that your Notebook is capable of supplying sufficient current through the USB ports.

**Note:** If only one USB port available, use the Master USB connector (for Acer NB).

**Note:** Recommend to plug 2 USB port or use AC adapter if non-Acer NB. If only one USB port available, use the Master USB connector and must plug in AC adapter (for non-Acer NB).

**Note:** Only support Notebook to link one C120.

### Minimum System Requirements:

- Core 2 Duo 2.0Ghz
- 2GB DDR SDRAM



.....  
**Note:** Video playback is not recommended when using netbook or CULV notebook (CPU power limitation).

**Note:** Dual-core notebook or above is recommended if you want a smooth video playback.

**Note:** USB bandwidth is depended on USB 3.0 or 2.0 specification.

### Supported OS:

- Windows XP Home or Professional 32-bit Service Pack 3 or later
- Windows Vista 32- and 64-bit Service Pack 2 or later
- Windows 7 32- and 64-bit.



.....  
**Note:** Mac OS and Android OS are not supported.

## Turn Off the Projector

When you have finished using the projector, unplugging the USB Y-cable from your Notebook.



.....  
**Note:** If C120 enters into standby mode, please re-plug USB cable.

## Display over USB

USB projection is an easy-to-use function to project a NB/PC's screen by single USB cable without needing any drivers. C120 provides both USB3.0 projection and USB2.0 projection.

When you first plug in your projector, NB/PC will detect C120 automatically and follow the onscreen instruction to install the application – Acer DisplayPal.

Run dlusb\_launcherC120.exe and then your NB/PC screen will be projected out via C120. Enjoy your USB projection.

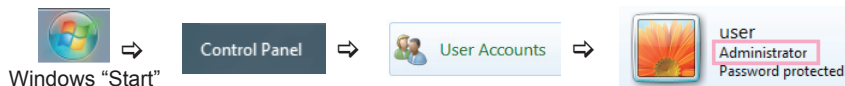
Acer DisplayPal will be displayed as tray icon, you will see “C120 detected” once C120 is ready to use.

## AutoPlay Installation

For first time use, follow Step\_1~3 to set up PC before plugging C120 into the PC USB port.

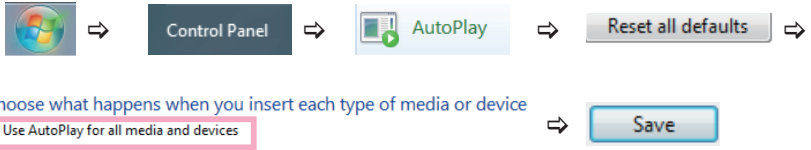
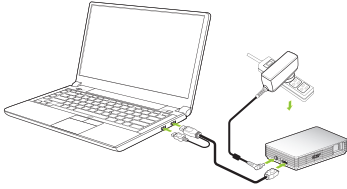
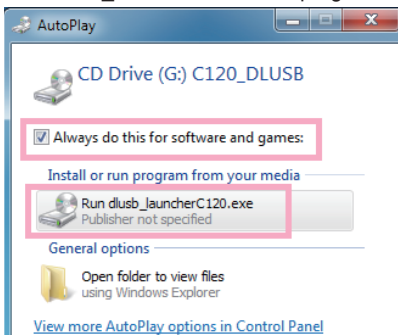
**Step\_1:** Please disable the anti-virus software and re-plug C120 into your PC until C120 is displayed.

**Step\_2:** Make sure you login to your PC with an “Administrator” account.



**Step\_3:** Reset PC “AutoPlay” function

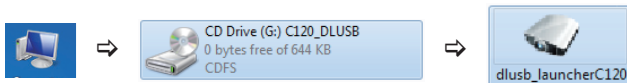
Reset “AutoPlay” to default setting & enable “Use AutoPlay for all media and devices”.

**Step\_4:** Plug C120 into the PC USB port**Step\_5:** C120 displays the ACER welcome logo**Step\_6:** Run “dlusb\_launcherC120.exe” program

When PC displays the “AutoPlay” window, select “Always do this software and games” & Run “dlusb\_launcherC120.exe”.

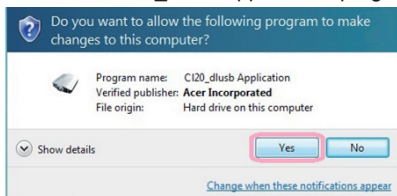


**Note:** If the “AutoPlay” window does not appear, right-click on the mouse button to open “C120 CD Driver disk” and run the “dlusb\_launcherC120.exe” program





**Step\_7:** Allow the “C120\_dlush Application” program to run



When Windows pops “User Account Control”, select “YES”.

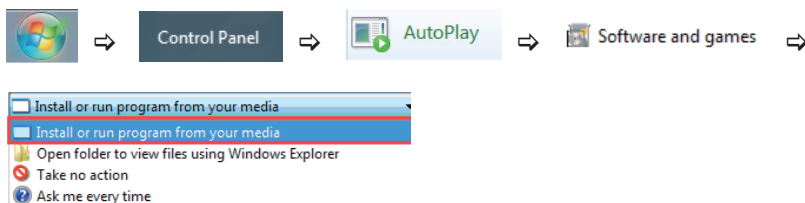
**Step\_8:** C120 displays the PC image.



The PC detects C120 and displays the control icon ; C120 will display PC screen image correctly.



**Note:** Make sure that “AutoPlay” is set to “Install or run program from your media”.



**Note:** It takes a little time for NB/PC to finish USB recognition if each first-time usage. Once you see above window, that means C120 has recognized by notebook.

**Note:** Please use C120 after NB/PC has finish OS start/restart procedure.

**Note:** Ensure that you have administrator-level permission on your NB/PC.

**Note:** You may see pop-up message window of anti -virus application to ask you if execute C120.

**Note:** It is recommended that you don't use other USB devices (External Optical drive, External HDD device, charging your mobile phone/devices) when using the USB projector.

**Note:** Don't support USB projection if DirectX PC games.

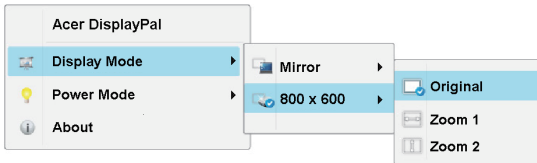
## Acer DisplayPal

Tap tray icon of Acer DisplayPal if you want to adjust setting.



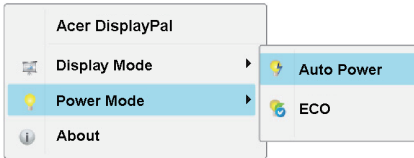
### Display Mode

You can choose Mirror mode or 800x600 mode to display. 800x600 is default setting.



### Power Mode

You can choose Auto Power mode and ECO mode. Auto Power is default.

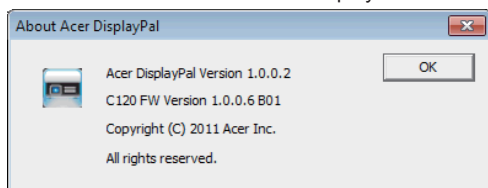


Refer to below table to choose the suitable one.

	Power Mode	Used USB port	Total Power (for reference)	Brightness ranking by ★ Brightness (unit: lm)	Remark
Auto	Adapter	NA	20W	★★★★★★	Recommended
	USB 3.0 x 1 (Master)	1 port, USB 3.0 x 1	9W	★★★★★★	No adapter, NB with USB 3.0 port
	USB 2.0 x 2	2 ports, USB 2.0 x 2	7W	★★★★★	No adapter, NB with USB 2.0 port only
	USB 2.0 x 1 (Master)	1 port, USB 2.0 x 1	4W~7W	★★★★	Depended on USB power (Only for Acer NB)
Eco	Adapter	NA	12W	★★★★★★	Recommended with silence
	USB 3.0 x 1 (Master)	1 port, USB 3.0 x 1	4.5W	★★	Depended on USB power
	USB 2.0 x 2	2 ports, USB 2.0 x 2	4W	★★	Depended on USB power
	USB 2.0 x 1 (Master)	1 port, USB 2.0 x 1	4W	★★	Depended on USB power (Only for Acer NB)

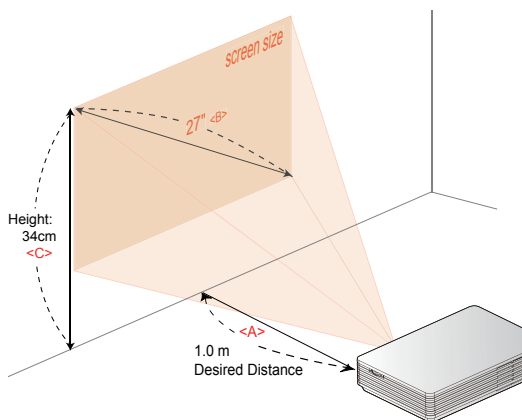
## About

About : version information of Acer DisplayPal.



## How to Optimize Image Size and Distance

Choose the appropriate distance for your need. After installation, you can now enjoy your USB projection.



Desired Distance (m) <A>	Screen Size		Top <C>
	Diagonal (inch) <B>	W x H (cm)	From base to top of image (cm)
0.37	10	22 x 12	12
0.5	14	30 x 17	17
1.0	27	61 x 34	34
1.5	41	91 x 51	51
2.0	55	121 x 68	68
2.5	68	152 x 85	85
3.0	82	182 x 102	102
3.5	96	212 x 119	119
3.65	100	221 x 124	124

## Appendices

### Troubleshooting

Some solutions to problems that you may encounter:

#	Problem	Solution
1	No image appears on-screen	<ul style="list-style-type: none"> <li>• Make sure the USB cables are correctly and securely connected.</li> <li>• Make sure that your Notebook is turned on.</li> <li>• Please check to plug Master USB connector.</li> <li>• Recommend to use power adapter if not acer notebook.</li> </ul>
2	Image is out of focus	<ul style="list-style-type: none"> <li>• Adjust the focus dial.</li> <li>• Adjust the distance from the screen to suit your viewing needs.</li> </ul>
3	Image is too small or too large	<ul style="list-style-type: none"> <li>• Move the projector closer or further away from the screen.</li> </ul>
4	Image is flickering	<ul style="list-style-type: none"> <li>• Adjust power mode because USB power is not enough. Follow on-screen instruction to adjust.</li> <li>• USB power adapter in the market is for reference.</li> </ul>

## Specifications

Projection System	DLP®	Weight	176 g
Resolution	Native FWVGA (854 x 480)	Dimensions	110 x 85 x 25 mm (4.3" x 3.3" x 0.98")
Displayable Colors	16.7 Million Colors		
Vertical Refresh Scan Rate	25 Hz to 86 Hz	Input Interface	DC IN x 1 USB 3.0 Micro B type x 1
Horizontal Scan Rate	30 KHz to 100 KHz	Power Supply	40W AC adapter (19V/2.54A, 100V ~ 240V AC) USB Power (type A) from NB
Projection Lens	F = 1.87, f = 11.00 mm Manual Focus		
Projection Screen Size	10" (25 cm) ~ 100" (365 cm)	AC Adapter	Standby mode <0.5W Normal mode <23W
Aspect Ratio	16:9 (Native), 4:3	Power Consumption	
Throw Ratio	55"@2 m (1.65:1)	Standard Accessories	AC adapter with AC plug x 1 USB Y-cable x 1 Pouch x 1 User's Guide (CD-ROM) x1 Quick start guide x1
Operating Temperature	5°C ~ 35°C / 41°F ~ 95°F		
Operating Humidity	35 ~ 80%RH		
Notebook Compatibility	Windows XP/Vista/Win7		

## Compatibility Modes

### A. PC 4:3 timing

VGA Analog - PC Signal			
Mode	Resolution	V.Frequency (Hz)	H.Frequency [KHz]
SVGA	800 x 600	60	37.9
XGA	1024 x 768	60	48.4
SXGA	1280 x 1024	60	64.0
QuadVGA	1280 x 960	60	60.0
SXGA+	1400 x 1050	60	65.3
UXGA	1600 x 1200	60	75.0

### B. PC Wide timing

VGA Analog - PC Signal			
Mode	Resolution	V.Frequency (Hz)	H.Frequency [KHz]
WXGA	1280 x 768	60	47.8
WXGA	1280 x 720	60	44.8
WXGA	1280 x 800	60	49.6
WXGA	1024 x 768	60	59.9
WSXGA+	640 x 480	60	65.3
WSXGA+	800 x 600	60	67.5
WSXGA+	1024 x 768	60	47.7