

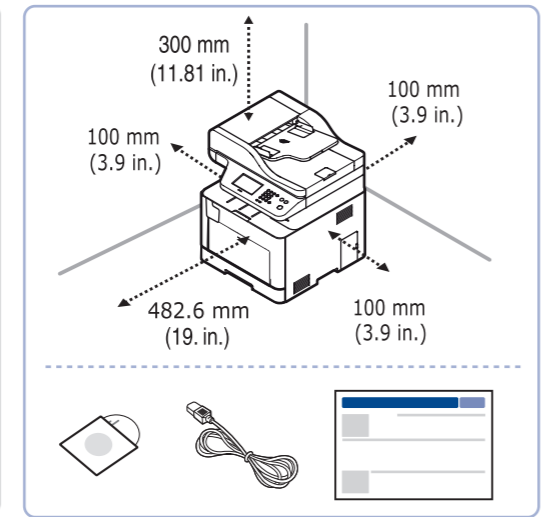
# Quick Installation Guide



FR Guide d'installation rapide

ES Guía rápida de instalación

## 1 Installing the toner cartridge



### 1 Detach / Détachez / Retirar

### 2 Open / Ouvrez / Abrir

### 3 Pull / Tirez / Tirar

### 4 Take out / Sortez / Extraer

### 5 Remove / Retirez / Quitar

CLX-419xN/  
CLX-419xFN/  
CLX-419xFW  
Series

CLX-626xND/  
CLX-626xFD/  
CLX-626xFR/  
CLX-626xFW  
Series

### 6 Shake / Secouez / Agitar

### 7 Insert / Insérez / Insertar

### 8 Push / Poussez / Empujar

### 9 Close / Fermez / Cerrar

## 2 Loading Paper

### 1 Open / Ouvrez / Abrir

### 2 Adjust / Ajuster / Ajustar

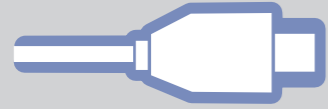
Legal (LGL)

### 3 Insert / Insérez / Insertar

### 4 Close / Fermez / Cerrar

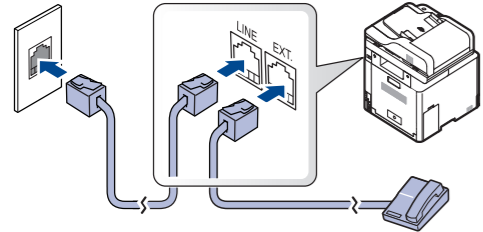
Letter Xerox Business Multipurpose 4200 or 20lb, 92 brightness  
 A4 Xerox Premier or 80g/m<sup>2</sup>, 92 brightness

### 3 Connecting Cable

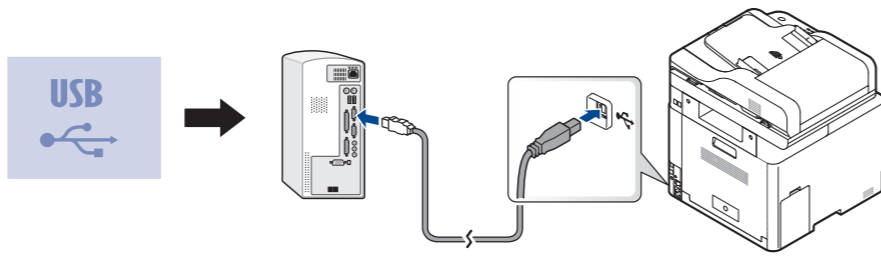


#### Connecting Fax Line (fax user only)

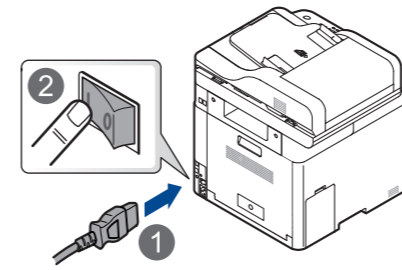
CLX-419xFN / CLX-419xFW / CLX-626xFD / CLX-626xFR / CLX-626xFW Series Only



#### 1 Connect / Branchez / Conectar



#### 2 Connect / Branchez / Conectar

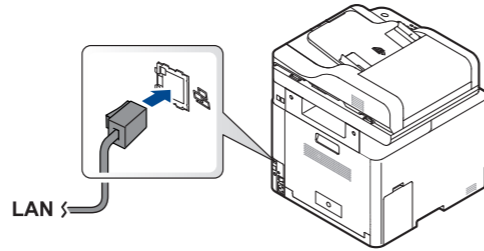


#### 3 Cancel / Annulez / Cancelar

Microsoft®  
Windows® XP /  
Windows® Vista



Network



Microsoft®  
Windows® 7

#### 4 Installing Software

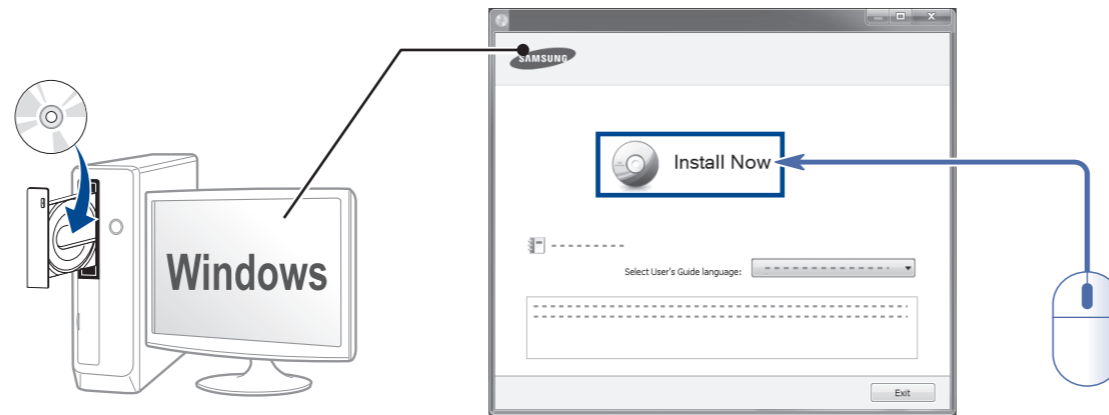


### 4 Installing Software



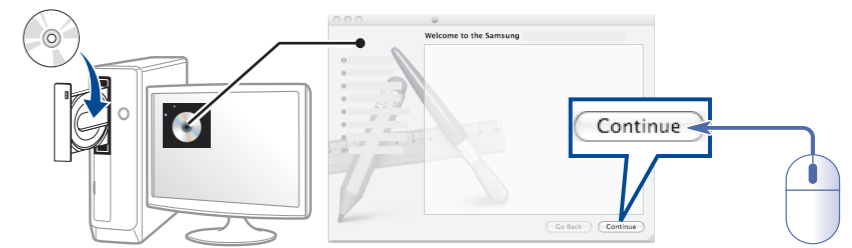
a

Windows



b

Mac



c

UNIX®

OR

Linux

<http://www.samsung.com> Download



Windows



a

Mac



b

UNIX® / Linux

c

For details about how to install software, refer to the User's Guide.

**FR** Pour savoir comment installer le logiciel, consultez le mode d'emploi.

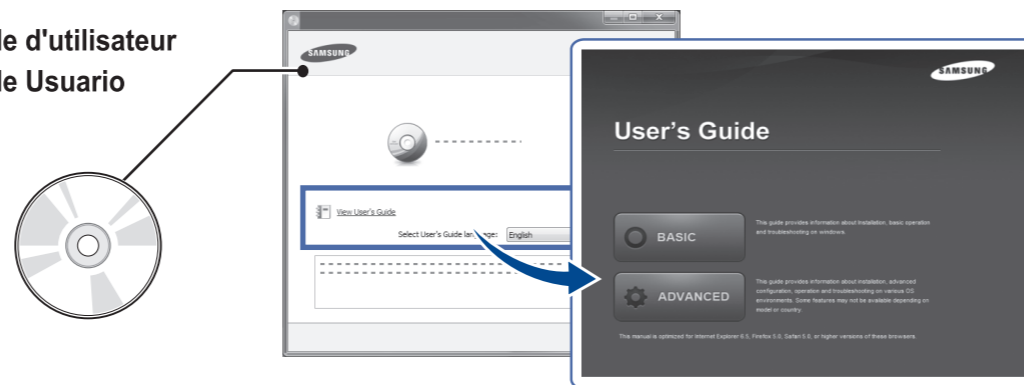
**ES** Si desea obtener más información sobre cómo instalar el software, consulte la Guía del usuario.

### 5 Viewing the User's Guide



**FR** Afficher le guide d'utilisateur

**ES** Ver el Manual de Usuario



Be sure to read the safety guidelines in the User's Guide on the supplied CD-ROM before using this product.

**FR** Avant d'utiliser ce produit, lisez attentivement les normes de sécurité indiquées dans le Guide de l'utilisateur disponible sur le CD-ROM inclus.

**ES** Antes de utilizar este producto, asegúrese de que ha leído las directrices sobre seguridad de la Guía del usuario que se encuentra en el CD-ROM suministrado.