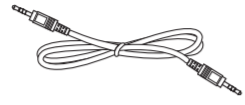


Power Cord



RS232 Cable



RS232 Daisy Chain Cable



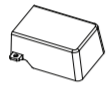
IR Sensor Cable



Philips logo plate



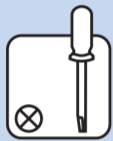
AC Switch Cover x 1



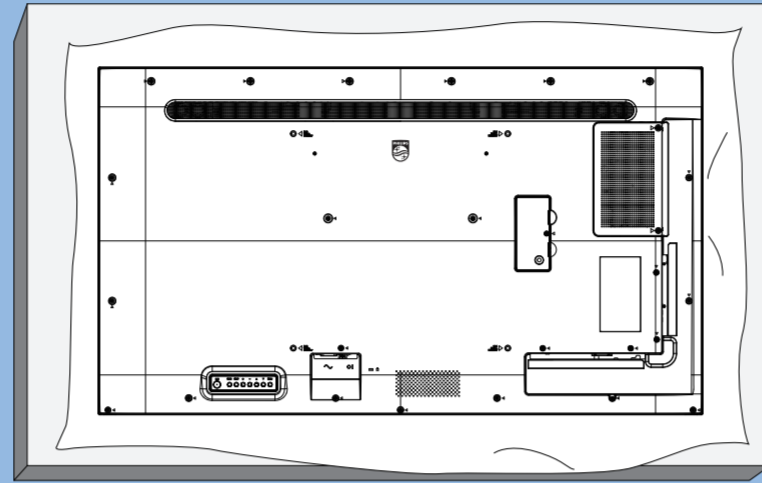
USB Cover x 1

* Differences according to regions.

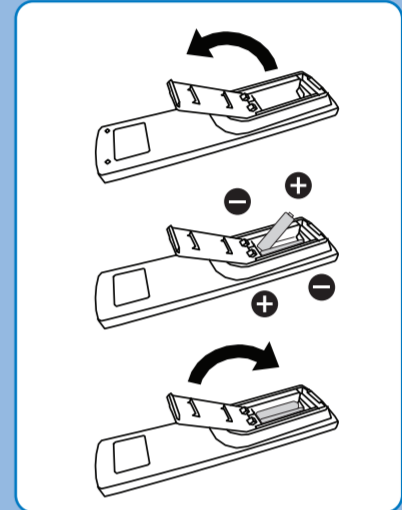
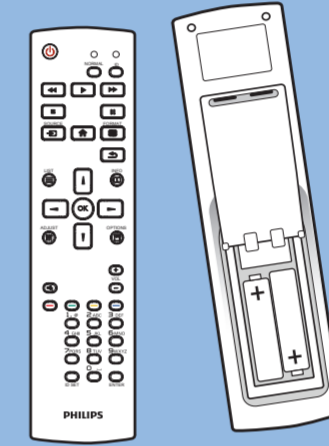
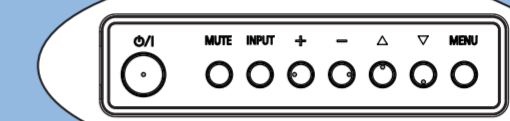
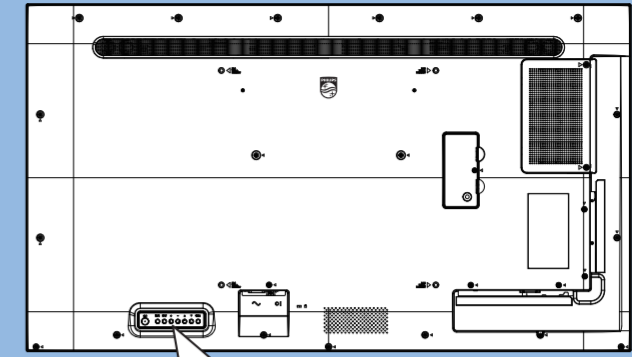
Display design and accessories may differ from those illustrated above.



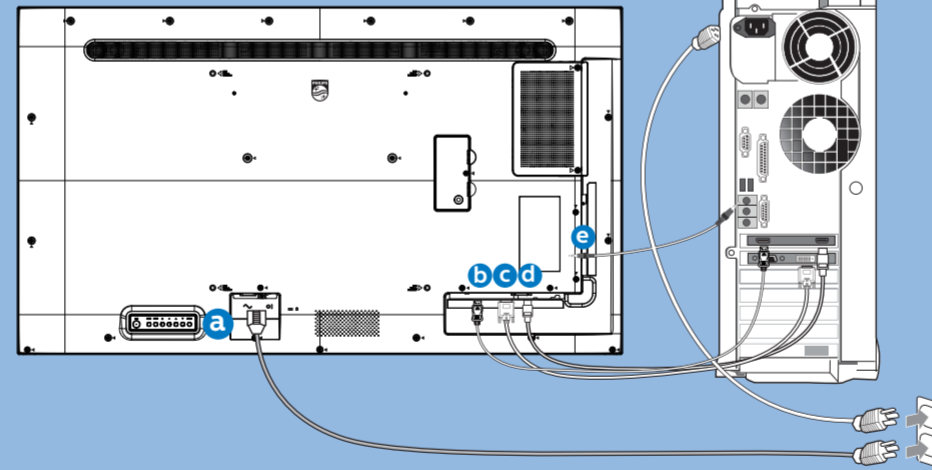
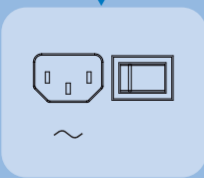
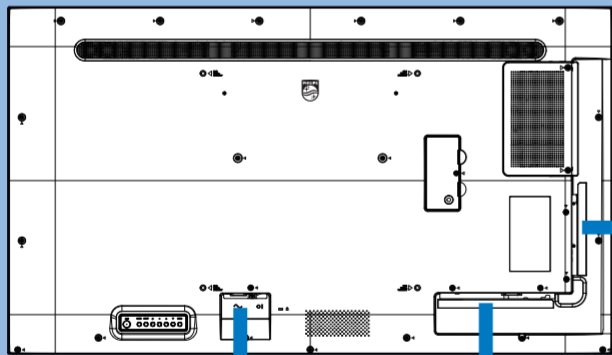
1



2



3



AC IN



DP



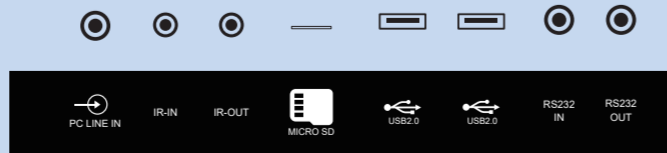
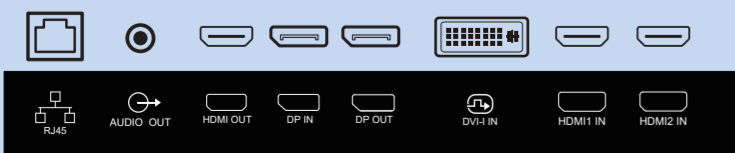
DVI



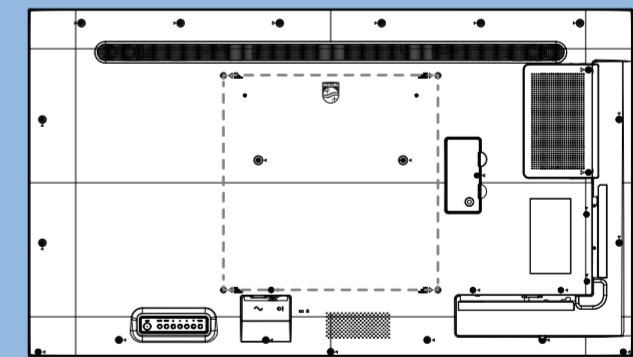
HDMI



AUDIO



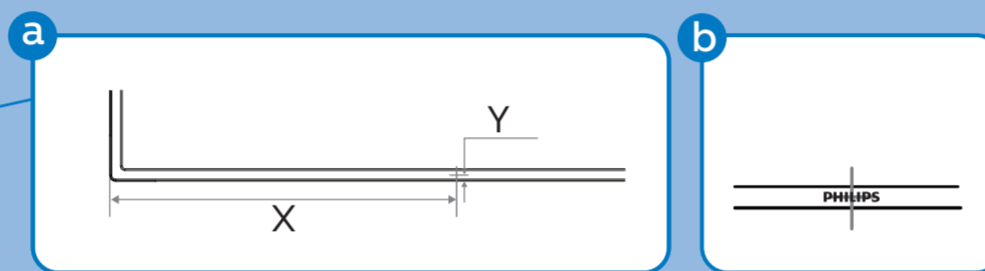
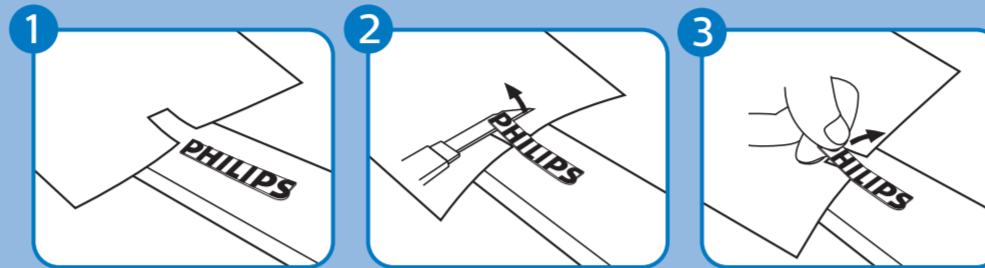
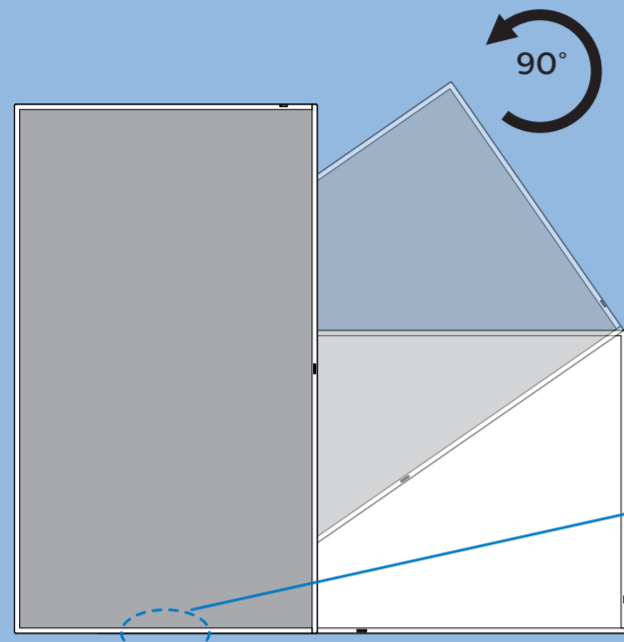
4



M6 * (10+X) mm
(X=Thickness of Wall mount BKT)

43BDL4550D: 200mmx200mm
50BDL4550D: 400mmx400mm
55BDL4550D: 400mmx400mm

5



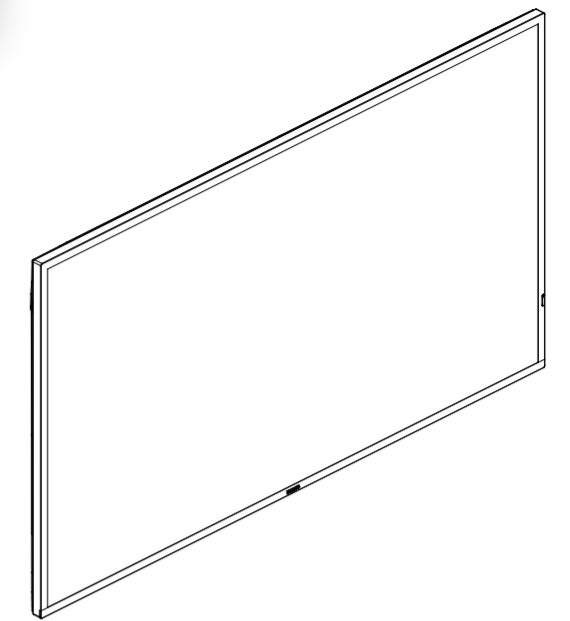
43BDL4550D: X=280.6mm Y=7.4mm
 50BDL4550D: X=324.5mm Y=7.9mm
 55BDL4550D: X=356.3mm Y=7.4mm

PHILIPS

Professional Display Solutions

D Line

43BDL4550D/50BDL4550D
55BDL4550D



Quick Start



Please check out the website below for more product information.
www.philips.com/signagesolutions-support



Envision Peripherals Inc.
 490 N McCarthy Blvd, Suite #120
 Milpitas, CA 95035
 USA

2020 © TOP Victory Investments Ltd. All rights reserved.
 This product has been manufactured by and is sold under the responsibility of Top Victory Investments Ltd., and Top Victory Investments Ltd. is the warrantor in relation to this product. Philips and the Philips Shield Emblem are registered trademarks of Koninklijke Philips N.V. and are used under license.

Specifications are subject to change without notice.

Version: V1.01 2021-03-25

