

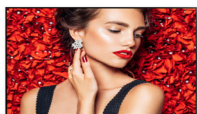


Philips Signage Solutions
D-Line Display

55"

Edge-lit LED
Full HD
450 cd/m²

SignageSolutions



55BDL4031D

Inform. Effortlessly.

Smart, powerful 24/7 display.

Make it clear with a powerful Philips D-Line Professional Full HD Display. This responsive solution offers brilliant picture quality, simple control and reliable connectivity.

Brilliant picture. Blazing processor speed.

- Full HD. Clear images. Crisp contrast
- IPS panel: rich colour consistency from every angle
- Place in landscape or portrait orientation

Effortless setup. Total control.

- Operate, monitor and maintain with CMND and Control

Cost-effective system solution

- Energy-saving automatic backlight control
- FailOver ensures that content is always playing

PHILIPS

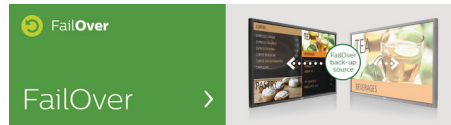
Highlights

CMND and Control



Run your display network over a local (LAN) connection. CMND and Control allows you to perform vital functions like controlling inputs and monitoring display status. Whether you're in charge of one screen or 100.

FailOver



From waiting room to meeting room, never show a blank screen. FailOver lets your Philips Professional Display switch automatically between primary and secondary inputs,

ensuring that content keeps playing even if the primary source goes down. Simply set a list of alternative inputs to be sure your business is always on.

Specifications

Picture/Display

- Diagonal screen size: 54.6 inch / 139 cm
- Panel resolution: 1920 x 1080p
- Optimum resolution: 1920 x 1080 @ 60 Hz
- Brightness: 450 cd/m²
- Contrast ratio (typical): 1100:1
- Dynamic contrast ratio: 500,000:1
- Aspect ratio: 16:9
- Response time (typical): 12 ms
- Pixel pitch: 0.630 x 0.630 mm
- Display colours: 16.7 Million
- Viewing Angle (H / V): 178 / 178 degree
- Picture enhancement: 3/2 - 2/2 motion pull down, 3D Comfilter, Motion compens. deinterlacing, Progressive scan, 3D MA deinterlacing
- Panel technology: IPS
- Placement: Landscape (24/7), Portrait (24/7)

Connectivity

- Video input: Display Port 1.2 (x 1), DVI-I (x 1), HDMI (x 2)
- Video output: DisplayPort 1.2 (x 1), DVI-I (x 1)
- Audio input: 3.5 mm jack
- Audio output: 3.5 mm jack
- External control: RJ45, RS232C (in/out) 2.5 mm jack, IR (in/out) 3.5 mm jack

Supported Display Resolution

Computer formats

Resolution	Refresh rate
1920 x 1200	60 Hz
1920 x 1080	60 Hz
1600 x 1200	60 Hz
1440 x 900	60 Hz
1366 x 768	60 Hz
1360 x 768	60 Hz
1280 x 800	60 Hz
1280 x 768	60 Hz
1024 x 768	60 Hz
800 x 600	56, 60, 72, 75 Hz
640 x 480	60, 67, 72, 75 Hz

Video formats

Resolution	Refresh rate
1080p	50, 60 Hz
1080i	50, 60 Hz
720p	50, 60 Hz
576i	50 Hz
576p	50 Hz

480p	60 Hz
480i	60 Hz

Dimensions

- Set dimensions in inch (W x H x D): 48.56 x 27.96 x 1.79 inch
- Set dimensions (W x H x D): 1233.4 x 710.3 x 45.5 mm
- Bezel width: 9.6 mm (T/L/R), 15.7 mm (B)
- Product weight (lb): 39.68 lb
- Product weight: 18.0 kg
- VESA Mount: 400 x 400 mm, M6

Convenience

- Tiled Matrix: Up to 15 x 15
- Keyboard control: Hidden, Lockable
- Signal loop through: DisplayPort, IR Loop through, DVI
- Network controllable: RJ45, RS232
- Screen-saving functions: Pixel Shift
- Picture in picture: PIP

Power

- Consumption (On mode): 150 W (max)
- Standby power consumption: <0.5 W
- Mains power: AC (100–240 V), 2.5 A
- Consumption (Typical): 85 W

Operating conditions

- Temperature range (operation): 0 ~ 40 °C
- Temperature range (storage): -20 ~ 60 °C
- Altitude: 0 ~ 3000 m
- MTBF: 50,000 hour(s)
- Humidity range (operation)[RH]: 20~80% RH (No condensation)
- Humidity range (storage) [RH]: 5~95% RH (No condensation)

Sound

- Built-in speakers: 2 x 10 W RMS

Accessories

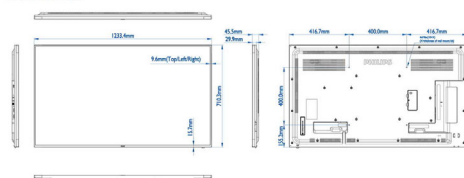
- Included accessories: Remote Control, Batteries for remote control, AC Power Cord, Quick start guide, RS232 cable
- Included Accessories: Edge Alignment Kit (1)-2pcs, Edge Alignment Kit (2)-1pcs, M3 screw (x 1), RS232 daisy-chain cable, SD card cover (x 1),

- Thumb Screw (x 8)
- Stand: BM05922 (Universal Stand-L)(Option)

Miscellaneous

- On-Screen Display Languages: English, French, German, Italian, Polish, Turkish, Russian, Spanish, Simplified Chinese, Traditional Chinese, Arabic, Japanese
- Regulatory approvals: CE, BSMI, CB, EAC, FCC, Class A, PSB, UL/cUL, EMF, EnergyStar 8.0
- Warranty: 3 year warranty

Philips 55BDL4031D
Version: 1.0
Release Date: 2019/05/27



Issue date 2020-11-05

Version: 5.0.1

12 NC: 8670 001 57457
EAN: 87 12581 75600 0

© 2020 Koninklijke Philips N.V.
All Rights reserved.

Specifications are subject to change without notice.
Trademarks are the property of Koninklijke Philips N.V.
or their respective owners.

www.philips.com