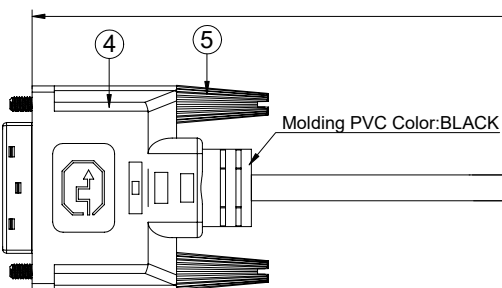
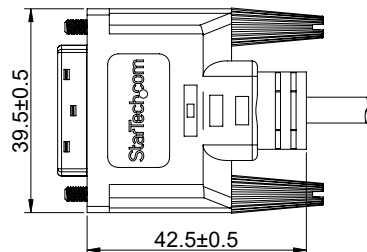
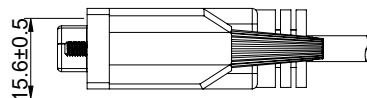
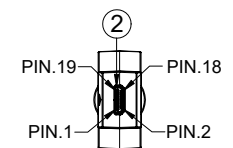
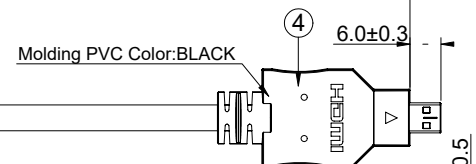
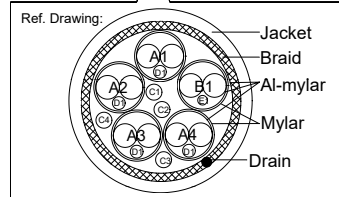


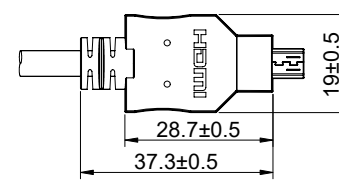
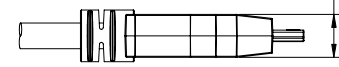
(CN.1)



Ø5.0±0.15



(CN.2)



(A). Wire Pin Assignment and Wire Description:

CN. 1	PAIR#	CN. 2	COLOUR
2	PAIR1	3	WHITE
1		5	RED
3	PAIR2	4	DRAIN
10		6	WHITE
9	PAIR3	8	GREEN
11		7	DRAIN
18	PAIR4	9	WHITE
17		11	BLUE
19	PAIR5	10	DRAIN
23		12	WHITE
24	PAIR6	14	BROWN
22		13	DRAIN
6	SIGNAL	17	WHITE
7	SIGNAL	18	PURPLE
15	SIGNAL	16	DRAIN
14	SIGNAL	19	RED
16	SIGNAL	1	GREEN
SHELL		SHELL	BRAID

(B). Electrical Testing :

- a. Open/Short:100%. Testing Line-Process.
- b. HI-POT: 100V AC/0.1sec.
- c. Insulation Resistance: 10MΩ (MIN) 300V DC
- d. Conductive Resistance: 5Ω (MAX)

Length table:

Part NO.(F)	Length(L)
HDDDVIMM1M	1000±30
HDDDVIMM2M	2000±50
HDDDVIMM3M	3000±70

ITEM	MATERIALS LIST & SPEC. DESCRIPTION	Q'TY
⑤	DVI Thumb 4-40 UNC Screws BLACK	2PCS
④	MOLDING:PVC BLACK	/
③	DVI 18+1 MALE, TERMINAL Au-PLATED,SHELL Au-PLATED	1
②	HDMI D/M,TERMINAL Au-PLATED, SHELL Au-PLATED	1
①	HDMI CABLE [(30AWGx2+EAM)x4P+(32AWGx2+EAM)x1P+32AWGx4C]+AEB OD:5.0mm Copper Braid:85% Jacket Color: Black PVC	/

THIRD ANGLE PROJECTION

GENERAL NOTES
DIMENSIONS ARE IN MM - DO NOT SCALE
THIS DOCUMENT CONTAINS CONFIDENTIAL, PROPRIETARY INFORMATION THAT IS PROPERTY OF STARTECH.COM

StarTech.com

PRODUCT ID	HDDDVIMMxM		
DESCRIPTION	Micro HDMI to DVI-D Cable - M/M		
REV: A	DO NOT SCALE	SHEET : 1 OF: 1	DATE: 05/04/2020