

Fujitsu recommends Windows 10 Pro for business.

# Data Sheet

## FUJITSU Notebook LIFEBOOK U7310

### Ultra-Mobile Meets Ultra Secure

The new FUJITSU Notebook LIFEBOOK U7310, based on the 10th generation Intel® Core™ processor is a slim, light and stylish ultra-mobile notebook for business professionals. With its 13.3-inch screen, light weight of 1.17 kg, Intel® Thunderbolt™ ports, it provides excellent mobility and portability. Ergonomic viewing is guaranteed along with outstanding security with the integrated PalmSecure™ or finger print sensor. The common port replicator facilitates workplace sharing within today's modern workstyle.



#### Elegant design and mobility

Manage your workday with premium notebooks providing ultimate convenience to maximize your productivity

- A remarkably slim 19 mm ultra-mobile notebook starting from 1.17 kg, HD or FHD display, anti-glare, FHD touch panel option, magnesium housing and optional backlit keyboard
- Durability is Military Standard MIL-STD-810H tested



#### Excellent security for your business

Enhance your security with outstanding features to best protect your notebook and company data from unauthorized access

- Integrated PalmSecure™ or finger print sensor
- ePrivacy Filter: Keep safe from prying eyes
- Infrared Camera: Allows face recognition with Windows Hello
- Built-in Privacy Camera Shutter: Protecting your privacy
- SmartCard reader and TPM 2.0



#### Premium connectivity

Stay flexible and productive within a modern workplace environment

- Compact and versatile Intel® Thunderbolt™ 3 USB Type-C connector to charge your laptop, transfer files at fast speeds, connect external monitors and other peripherals
- Full set of interfaces with full-size LAN connector, full-size VGA port and USB Type-C
- Embedded 4G/LTE

#### Convenient upgradeability

Direct access to key components reduces upgrade time and costs

- Battery, memory and internal storage can be changed easily

#### Family concept

Reduce your acquisition cost as well as the complexity of your IT equipment

- Shared components such as the same classic or USB Type-C port replicator, AC Adapter, keyboard layout, BIOS and Bit Image across the ultra-mobile LIFEBOOK U7 family



# Components

<b>Base unit</b>	LIFEBOOK U7310
<b>Operating systems</b>	
<b>Operating system pre-installed</b>	Windows 10 Pro. Fujitsu recommends Windows 10 Pro for business. Windows 10 Home
<b>Operating system notes</b>	Windows 10 Support: After the end of the product life FUJITSU will continue to test and support all upcoming Windows 10 releases for a period of maximum 5 years – depending on the available extension of hardware services through FUJITSU Warranty top ups. For details please see "FUJITSU Service Statement for Windows 10 Semi-Annual-Channel Support" at <a href="http://support.ts.fujitsu.com">http://support.ts.fujitsu.com</a> .
<b>Processor</b>	
	Intel® Core™ i7-10610U processor (4 Cores / 8 Threads, 1.8 GHz, up to 4.9 GHz)
	Intel® Core™ i7-10510U processor (4 Cores / 8 Threads, 1.8 GHz, up to 4.9 GHz) *
	Intel® Core™ i5-10310U processor (4 Cores / 8 Threads, 1.7 GHz, up to 4.4 GHz)
	Intel® Core™ i5-10210U processor (4 Cores / 8 Threads, 1.6 GHz, up to 4.2 GHz) *
	Intel® Core™ i3-10110U processor (2 Cores / 4 Threads, 2.1 GHz, up to 4.1 GHz) *
	*Processor only for retail, SMB, education and government
<b>LCD Display</b>	Optional ePrivacy Filter
<b>Memory modules</b>	
	4 GB (1 module(s) 4 GB) DDR4, 2,666 MT/s, SO DIMM
	8 GB (1 module(s) 8 GB) DDR4, 2,666 MT/s, SO DIMM
	16 GB (1 module(s) 16 GB) DDR4, 2,666 MT/s, SO DIMM
	32 GB (1 module(s) 32 GB) DDR4, 2,666 MT/s, SO DIMM
<b>Hard disk drives (internal)</b>	
	PCIe-SSD, 512 GB M.2 NVMe module, SED
	PCIe-SSD, 256 GB M.2 NVMe module, SED
	PCIe-SSD, 256 GB M.2 NVMe module
	PCIe-SSD, 32 GB Optane + 512 GB M.2 NVMe module, SED
	PCIe-SSD, 1 TB M.2 NVMe module, SED
<b>Hard disk notes</b>	Accessible capacity may vary, also depending on used software.
<b>Interface add on cards/components (optional)</b>	
<b>3G/4G (optional)</b>	LTE Sierra Wireless EM7455 (Cat.6) (Downlink speed up to 300 Mbit/s, Uplink speed up to 50 Mbit/s) LTE Sierra Wireless EM7421 (Cat.7) (Downlink speed up to 300 Mbit/s, Uplink speed up to 150 Mbit/s) LTE Fibocom L850-GL (Cat.9) (Downlink speed up to 450 Mbit/s, Uplink speed up to 50 Mbit/s)
<b>Display</b>	
	33.8 cm (13.3-inch),LED backlight,(HD),Anti-glare display,magnesium,1,366 x 768 pixel,500:1,250 cd/m <sup>2</sup>
	33.8 cm (13.3-inch),LED backlight,(Full HD),Anti-glare IPS touchscreen,magnesium,1,920 x 1,080 pixel,800:1,300 cd/m <sup>2</sup>
	33.8 cm (13.3-inch),LED backlight,(Full HD),Anti-glare display,magnesium,1,920 x 1,080 pixel,700:1,300 cd/m <sup>2</sup>
	33.8 cm (13.3-inch),LED backlight,(Full HD),Anti-glare display,magnesium,1,920 x 1,080 pixel,1000:1,400 cd/m <sup>2</sup>
<b>Multimedia</b>	
<b>Camera</b>	Built-in webcam (HD) with Status LED Built-in Infrared webcam (HD) with Status LED
<b>Camera notes</b>	720p, 1 megapixels, 1280 x 720, with Privacy Camera Shutter
<b>Microphone</b>	dual digital array microphone

## Base unit

<b>Base unit</b>	LIFEBOOK U7310
------------------	----------------

**General system information**

Chipset	Integrated
Built-in memory	8 GB
Supported capacity RAM (min.)	8 GB
Supported capacity RAM (max.)	40 GB
Memory slots	1 SO DIMM (DDR4, 2666 MHz)
Memory notes	Dual channel support
LAN	Built-in 10/100/1,000 MBit/s Intel® I219LM
Integrated WLAN	Intel WiFi 6 AX201
BIOS version	UEFI Specification 2.7
BIOS features	InsydeH2O BIOS
Audio type	On board
Audio codec	Realtek ALC255 with MaxxAudio
Audio features	2x built-in speakers (stereo)
MIL-STD tested	Yes, selected MIL-STD-810H tests passed. MIL-STD-810H test results are not a guarantee of future performance under identified test conditions. Accidental damage is not covered under standard international limited warranty.

**Display**

Display notes	HD - Viewing angle: Left/Right 45°, Top 20°, Bottom 40°; Color Gamut: 45% FHD - Viewing angle: Left/Right 85°, Top 85°, Bottom 85°; Color Gamut: 72%
Brightness - typical	HD - 250cd/m <sup>2</sup> , FHD - 300 cd/m <sup>2</sup> , Touch - 300 cd/m <sup>2</sup> , ePrivacy - 400 cd/m <sup>2</sup>
Contrast - typical	HD - 500:1, FHD - 700:1, Touch - 800:1, ePrivacy - 1000:1

**Graphics**

Base unit	LIFEBOOK U7310
TFT resolution (HDMI)	Up to 4,096 x 2,160 pixel (30 Hz)
TFT resolution (VGA)	up to 1,920 x 1,200
Graphics brand name	Intel® UHD Graphics
Graphics features	3 Display Support DirectX® 12 OpenGL® 4.5
Graphics notes	Shared memory depending on main memory size and operating system

**Interfaces**

DC-in	1
Audio: line-out / headphone	1 (combo port with Audio line-in)
Audio: line-in / microphone	1 (combo port with Audio line-out)
Internal microphones	2x digital array microphones (optional)
USB 3.2 Gen 1 (5 Gbps) total	2x Type-A (1 with Anytime USB charge functionality)
USB 3.2 Gen 2 (10 Gbps) total	1x Type-C Intel® Thunderbolt™ 3 (with Power Delivery functionality)
USB Type-C	USB 3.2 Gen.2 (10 Gbps), Intel® Thunderbolt™ 3 (20/40Gbps), Power Delivery (15W), DP out
VGA	1
DisplayPort	1 (via USB Type-C adapter) - v1.2
HDMI	1 v1.4b
Ethernet (RJ-45)	1 (with status LED)
Memory card slots	1 SD 3.0 Standard SD/microSD card: 2GB SDHC/microSDHC card: 32GB SDXC/microSDXC card: 2TB Speed Class: up to UHS-I (104MB/s)
SmartCard slot	1 (optional)
SIM card slot	1 (Micro-SIM, only for models with integrated 4G/LTE module)
Docking connector for Port Replicator	1
Kensington Lock support	1

**Port Replicator interfaces (optional)**

	Model: NPR46 (mech. PR)	Model: USB Type-C PR	Model: Thunderbolt™ 3 PR
DC-in	1 (19V/90W required)	1 (19V/90W required)	1 (19V/170W required)
Power on switch	1	1	1
Audio: headphone	1	---	---
Audio: microphone	1	---	---
Audio: comments	---	1 Combo jack for headset usage	1 Combo jack for headset usage
USB 3.2 Gen 1 (5 Gbps) total	4x Type-A 2x Type-C	3x Type-A - 4.5W 1x Type-C - 15W 1x Type-C - Up to 60 W (PD v2.0-1.1) power output to client or 4.5W input	---
USB 3.2 Gen 2 (10 Gbps) total	---	---	2x Type-A - 5V/0.9A, 4.5W 1x Type-A - 5V/2.4A, 12W 2x Type-C - 5V, 1.5A, 4.5W charging port 1x Type-C - TBT3 up to 60 W (PD v2.0-1.1), 5-20V, 3.0A upstream (PC) 1x Type-C - TBT3 up to 15 W (PD v2.0-1.1), 5V, 3.0A downstream, power output to client
DisplayPort	2 (up to 2x 3840x2160 60Hz)	1 (up to 2560 x 1600)	2 (up to 2560 x 1600)
VGA	1 (up to 1920x1200 6Hz)	1 (up to 1920x1200 @ 60Hz depending on FJ mobile client)	---
DVI	1 (up to 1920x1200 60Hz)	---	---
HDMI text	---	1	1
Kensington Lock support	1 (Portrep only, Portrep option with key lock to secure Portrep & System)	no	1
Notes	1 RJ45 (10/100/1000)	1 RJ45 (10/100/1000) WoL from S3 state WoL from S4 / S5 / G3 depending on Fujitsu mobile client Launch of PXE for dedicated FJ mobile clients C Set the MAC address by the user MAPT from 9th gen	RJ-45: 10/100/1000 Mbits/s LAN WoL from S3 state WoL from S4 / S5 / G3 state depending on Fujitsu mobile client PXE launching for dedicated FJ mobile C clients Set the MAC address by the user MAPT

**Keyboard and pointing devices**

Keyboard w/o touchstick (spill-resistant), Keyboard w/ touchstick, Backlight keyboard w/o touchstick  
Number of keyboard keys: 85, Keyboard pitch: 19 mm, Keyboard stroke: 1.7 mm  
Multi gesture touchpad with two mouse buttons  
Status LED  
Power Button

**Wireless technologies**

Antennas	2 Dual band WLAN antennas, 2 LTE antennas optional
Bluetooth	v5.0
Integrated WLAN	Intel WiFi 6 AX201
WLAN encryption	WPA/WPA2 (Wi-Fi Protected Access)
WLAN notes	Import and usage according to country-specific regulations.
Integrated LTE or UMTS	LTE Sierra Wireless EM7455 (cat.6) LTE Sierra Wireless EM7421 (cat.7) LTE Fibocom L850-GL (cat.9)
GPS	Embedded in 4G module if configured with WWAN

**Power supply**

AC Adapter	19 V / 65 W (3.42 A), 100 V - 240 V, 50 Hz - 60 Hz, 3-pin (grounded) slim and light AC-Adapter 19 V / 90 W (4.74 A), 100 V - 240 V, 50 Hz - 60 Hz, 3-pin (grounded) AC-Adapter
Notes	65W AC Adapter for usage with system/ 90W AC Adapter for usage with Port Replicator

**Power supply**

<b>1st battery options</b>	Lithium polymer battery 4-cell, 4,170 mAh, 60 Wh
<b>1st battery</b>	Lithium polymer battery 4-cell, 60 Wh
<b>Battery features</b>	Quick Charge: 80% in 1h
<b>Runtime 1st battery</b>	up to 13 h 20 min (or up to 10 h with ePrivacyFilter)
<b>Battery notes</b>	Battery runtime information is based on worldwide acknowledged BAPCo® MobileMark® 2018. Refer to <a href="http://www.bapco.com">www.bapco.com</a> for additional details. The BAPCo® MobileMark® Benchmark provides results that enable direct product comparisons between manufacturers. It does not guarantee any specific battery runtime which actually can be lower and may vary depending on product model, configuration, application and power management settings. The battery capacity decreases slightly with every re-charge and over its lifetime.

**Noise emission**

<b>Noise emission</b>	Please refer to the Eco Declaration
-----------------------	-------------------------------------

**Dimensions / Weight / Environmental**

<b>Dimensions (W x D x H)</b>	311.4 x 216.8 x 19.2mm (non-touch and touch) mm 12.26 x 8.54 x 0.76 (non-touch and touch) inch
<b>Weight</b>	from 1.17 kg
<b>Weight (lbs)</b>	from 2.58 lbs
<b>Weight notes</b>	Weight may vary depending on actual configuration
<b>Operating ambient temperature</b>	5 - 35 °C (41 - 95 °F)
<b>Operating relative humidity</b>	20 - 80 %

**Compliance**

<b>Product</b>	LIFEBOOK U7310
<b>Model</b>	7U13A1
<b>Germany</b>	GS (Full HD Display only)
<b>Europe</b>	CE CB
<b>USA/Canada</b>	FCC (depending on configuration)
<b>Global</b>	RoHS (Restriction of hazardous substances) WEEE (Waste electrical and electronic equipment) Microsoft Operating Systems (HCT / HCL entry / WHQL) TCO Certified 8.0 (depending on configuration) EPEAT® Bronze (dedicated regions) ENERGY STAR® 8.0 MIL-STD-810H tested
<b>China</b>	CCC (depending on configuration)
<b>Compliance link</b>	<a href="https://sp.ts.fujitsu.com/sites/certificates">https://sp.ts.fujitsu.com/sites/certificates</a>

**Additional Software**

<b>Additional software (preinstalled)</b>	McAfee® LiveSafe™ (provides award-winning antivirus protection for your PC and much more. 30 days trial pre-installed) Waves MaxxAudio (audio enhancer) Fujitsu Plugfree Network (network management utility) Fujitsu Anytime USB Charge Utility Fujitsu Battery Utility Fujitsu Function Manager Fujitsu DeskUpdate (driver and utility tool)
<b>Additional software (optional)</b>	Recovery DVD for Windows® Drivers & Utilities DVD (DUDVD) CyberLink YouCam (webcam software) Microsoft® Office Professional 2019 Microsoft® Office Home and Business 2019 (A Microsoft Account is required to activate each copy of these products. For purchase and activation only in the region in which it was acquired.)

<b>Manageability technology</b>	DeskUpdate Driver management PXE 2.1 Boot code Wake up from S5 (off mode) WoL (Wake on LAN) Intel® vPro™ technology
<b>Manageability software</b>	DeskView Client DeskView Instant BIOS Management
<b>DeskView components</b>	Inventory Management BIOS Management Driver Management Security Management Alarm Management
<b>Supported standards</b>	WMI (Windows Management Instrumentation) PXE (Preboot Execution Environment) DMI (Desktop Management Interface) SMBIOS (System Management BIOS) CIM (Common Information Model) BootP (made4you)
<b>Manageability link</b>	<a href="http://www.fujitsu.com/fts/manageability">http://www.fujitsu.com/fts/manageability</a>

**Security**

<b>System and BIOS Security</b>	EraseDisk Trusted Platform Module (TPM 2.0)
<b>User Security</b>	Embedded PalmSecure™ sensor (optional) Embedded fingerprint sensor (optional) Access protection via internal SmartCard reader (optional) Hard disk password User and supervisor BIOS password

**Warranty**

<b>Warranty period</b>	2 years (for countries within EMEA)
<b>Warranty type</b>	Bring-in Service / Collect & Return Service (depending on country)
<b>Warranty Terms &amp; Conditions</b>	<a href="http://www.fujitsu.com/warranty">http://www.fujitsu.com/warranty</a>
<b>Product Support Services - the perfect extension</b>	
<b>Recommended Service</b>	9x5, Onsite Response Time: Next Business Day
<b>Spare Parts availability</b>	5 years after end of product life
<b>Service Weblink</b>	<a href="http://www.fujitsu.com/emeia/products/product-support-services/">http://www.fujitsu.com/emeia/products/product-support-services/</a>

## Recommended Accessories

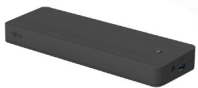
**Port Replicator for LIFEBOOK U7 and E5 family with key lock**



Flexibility, expandability, desktop replacement, investment protection – to name just a few benefits of Fujitsu's docking options.









Order Code:  
S26391-F1607-L219

**USB Type-C Port Replicator 2**



Connect to your peripherals. Adapt to the task on demand. The universal USB Type-C connection helps you to get your peripheral devices connected easily. Enhance your USB connection options, connect your displays via HDMI, DisplayPort or VGA and charge your device without an additional charger.

Order Code:  
S26391-F3327-L100

<b>Thunderbolt™ 3 Port Replicator</b>		One cable, many capabilities - Connect, save space, and keep your desk tidy. With Thunderbolt™ 3 you can connect almost everything with only one cable and in high speed. Enhance your USB connection options, connect your displays via Thunderbolt™ 3, HDMI, DisplayPort and charge your device without an additional charger. Thunderbolt™ 3 allows you to connect even high-speed devices in a most convenient way.	Order Code: S26391-F3357-L100
<b>USB Port Replicator PR09</b>		The new FUJITSU USB Port Replicator PR09 is the perfect solution for shared desk environments within a hyperconnected world. It connects your mobile system to your main peripherals with a single USB plug. This Port Replicator is equipped with the most powerful DisplayLink chipset supporting high performance video streaming with Dualhead-DisplayPort. Highest data throughput is guaranteed due to an USB Type-C based Gen2 Hub-Controller enabling up to 10Gbit/s data streaming. The newest version of USB Power Delivery chipset (PD3.0) provides powerful charging during your workday.	Order Code: S26391-F6007-L500
<b>Battery 4 cell 60 Wh</b>		The 4 cell 60 Wh battery requires a voltage of 14.4 V and has a capacity of 4170 mAh. The weight of the battery is 342 gms and the recharge time of the cell is 60 minutes for a 80% charge and 150 minutes for a complete 100% charge.	Order Code: S26391-F3356-L100
<b>Wireless Notebook Mouse WI610</b>		The Wireless Notebook Mouse WI610 uses wireless 2.4 GHz technology, and an ultra-high resolution switchable sensor to give you the precision and reliability you need (1000/1500/2000 dpi). Sporting a stylish silver-black finish, the WI610 wireless mouse is well suited to all environments.	Order Code: S26381-K460-L100
<b>MANASSE 14</b>		The Plevier Manasse 14 leather case is a compact and classic carrier for on the go. Available for notebooks up to 14 inches with a padded compartment, the sleeve ensures protection for your device while providing a sleek and subtle design in a black leather nappa shade.	Order Code: S26391-F1193-L62
<b>TACAN 14</b>		The Plevier Tacan 14 leather notebook bag provides a diverse range of features to optimize your carrier needs. With a shoulder strap, fast access pocket on the rear side and two compartments for your device and additional accessories, the bag provides multifunctional and protective space for your belongings. Its brown leather design creates a sleek finish to create a carrier that is high quality in both functionality and appearance.	Order Code: S26391-F1193-L64
<b>Wireless Notebook Mouse WI660</b>		The Wireless Notebook Mouse WI660 uses wireless 2.4 GHz technology, and an ultra-high resolution switchable sensor to give you the precision and reliability you need (1000/1600/2000 dpi). Sporting a stylish silver-black finish, the WI660 wireless mouse is well suited to all environments.	Order Code: S26381-K471-L100
<b>Keyboard KB950 Phone</b>		The KB950 Phone is a modern and slim line USB keyboard with integrated Skype for business features. This extremely reliable, high-speed input device is the perfect way to manage incoming and outgoing calls, even when the system is locked. Three additional keys make it easy to accept and end calls and mute your microphone during a call. Easy number dialing is assured with the numpad. The integrated 61 x 12 mm display shows the time and date, the user status and shows incoming call data in the form of the calling number and caller ID.	S26381-F950-L4** (**: Country specific variation)

## More information

### Fujitsu products, solutions & services

In addition to FUJITSU Notebook LIFEBOOK U7310, Fujitsu provides a range of platform solutions. They combine reliable Fujitsu products with the best in services, know-how and worldwide partnerships.

#### Fujitsu Portfolio

Build on industry standards, Fujitsu offers a full portfolio of IT hardware and software products, services, solutions and cloud offering, ranging from clients to datacenter solutions and includes the broad stack of Business Solutions, as well as the full stack of Cloud offering. This allows customers to leverage from alternative sourcing and delivery models to increase their business agility and to improve their IT operation's reliability.

#### Computing Products

[www.fujitsu.com/global/products/computing/](http://www.fujitsu.com/global/products/computing/)

#### Software

[www.fujitsu.com/software/](http://www.fujitsu.com/software/)

### More information

Learn more about FUJITSU Notebook LIFEBOOK U7310, please contact your Fujitsu sales representative or Fujitsu Business partner, or visit our website. [www.fujitsu.com/emeia/products/computing/pc/notebooks/index.html](http://www.fujitsu.com/emeia/products/computing/pc/notebooks/index.html)

### Fujitsu green policy innovation

Fujitsu Green Policy Innovation is our worldwide project for reducing burdens on the environment.

Using our global know-how, we aim to contribute to the creation of a sustainable environment for future generations through IT. Please find further information at <http://www.fujitsu.com/global/about/environment>



### Copyrights

All rights reserved, including intellectual property rights. Designations may be trademarks and/or copyrights of the respective owner, the use of which by third parties for their own purposes may infringe the rights of such owner. For further information see <http://www.fujitsu.com/emeia/resources/navigation/terms-of-use.html>

Copyright 2020 Fujitsu Technology Solutions GmbH

### Disclaimer

Technical data is subject to modification and delivery subject to availability. Any liability that the data and illustrations are complete, actual or correct is excluded. Designations may be trademarks and/or copyrights of the respective owner, the use of which by third parties for their own purposes may infringe the rights of such owner.

### Contact

Fujitsu Technology Solutions GmbH  
Website: [www.fujitsu.com](http://www.fujitsu.com)  
2020-11-12 EM-EN

All rights reserved, including intellectual property rights. Designations may be trademarks and/or copyrights of the respective owner, the use of which by third parties for their own purposes may infringe the rights of such owner. For further information see <http://www.fujitsu.com/emeia/resources/navigation/terms-of-use.html>  
Copyright 2020 Fujitsu Technology Solutions GmbH