

# Lenovo ThinkPad X13 GEN 1 *i*

The ThinkPad X13 *i* proves you don't have to sacrifice performance for portability. Though small in size, this professional notebook packs a big punch thanks to enhancements in processors, memory, storage, and wireless connectivity.

Along with improved security features and a brighter PrivacyGuard screen,<sup>1</sup> the ThinkPad X13 *i* boosts productivity as well with one-touch calling on the new F9-F11 keys and the ability to wake from sleep in one second and connect to the web a second later. On the road, at the office, or at home, the ThinkPad X13 *i* keeps you connected to the things that matter most.

<sup>1</sup>Optional

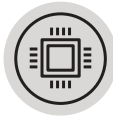


Smarter  
technology  
for all

Lenovo



# Lenovo ThinkPad X13 GEN 1 *i*



## GO-ANYWHERE PERFORMANCE

Don't let its size or weight fool you. The ThinkPad X13 *i* is built for portability and performance with up to 10<sup>th</sup> Generation Intel® Core™ i7 processors, up to 32GB DDR4 (2667MHz<sup>2</sup>) memory, and up to 2TB of PCIe SSD storage.



## ALWAYS ON, ALWAYS CONNECTED

The ThinkPad X13 *i* includes features like Modern Standby, which enables the machine to wake in one second and connect to the internet one second later, and Wake On Voice, which allows you to wake the machine via voice command with the lid open.



## NEW FEATURES AT YOUR FINGERTIPS

The ThinkPad X13 *i* enables you to conference in quickly from almost anywhere thanks to new UC functions on the F9 through F11 keys that enable you to make calls directly from your laptop with the touch of a button.



## FOR YOUR EYES ONLY

The ThinkPad X13 *i* features a brighter, 500nit FHD PrivacyGuard with PrivacyAlert screen,<sup>1</sup> which offers a better viewing experience for you while stopping shoulder surfers in their tracks. Other display options include an FHD IPS on-cell touch for a more interactive experience.

<sup>1</sup>Optional

<sup>2</sup>CPU constrains 3200MHz to perform at 2667MHz.



## connectivity

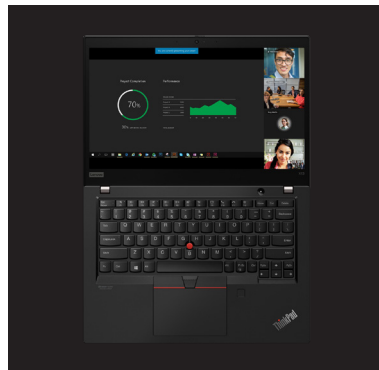
The ThinkPad X13 *i* keeps you connected no matter where you go, with optional WiFi 6 as well as LTE CAT9 and 16 capability.

## customization

Between processor, memory, storage, and display options, the ThinkPad X13 *i* offers nearly limitless configurations to help you build the ideal machine for you.

## security

Enhanced ThinkShield features, ThinkShutter, and an improved PrivacyGuard screen<sup>1</sup> keep your machine and your data secure from manufacturing through its entire lifecycle.



## Lenovo ThinkPad X13 GEN 1 i7

# performance

### PROCESSOR

Up to 10<sup>th</sup> Generation Intel® Core™ i7 Processors



### OPERATING SYSTEM

Up to Windows 10 Pro

### GRAPHICS

Integrated Intel® UHD Graphics

### CAMERA

HD + IR camera with ThinkShutter

### MEMORY

Up to 32GB DDR4 (2667MHz)<sup>3</sup>

### STORAGE

Up to 2TB PCIe SSD

### BATTERY

Up to 17 hours,<sup>2</sup> 48Whr battery

### AC ADAPTER

Up to Type-C 65W

### AUDIO

Dolby® Atmos® Speaker System  
2x Far Field Microphones

# security

Match on Chip touch Fingerprint Reader  
dTPM 2.0 chip  
ThinkShutter camera cover  
ThinkPad PrivacyGuard<sup>1</sup>  
Kensington™ lock slot

# connectivity

### INPUT/OUTPUT PORTS

2x USB 3.1 Type A  
2x USB Type C (1x Thunderbolt™ 3)  
1x uSD Card  
1x HDMI 1.4  
1x Audio (headphone and microphone combo jack)

### WIFI

WiFi 6 WLAN 802.11 AX  
LTE CAT9 and 16

### NFC

Yes

### DOCKING

Thunderbolt™ 3  
USB 3.0 Dock  
Side mechanical dock

# design

### DISPLAY

13.3" HD TN (250nit)  
13.3" FHD IPS (300nit)  
13.3" FHD IPS On-Cell Touch (300nit)  
13.3" FHD IPS PrivacyGuard (500nit)

### DIMENSIONS (W X D X H)

312 x 217.2 x 16.9 mm (FHD non-touch)  
311.9 x 217.2 x 16.9 mm (HD and FHD touch)

### WEIGHT

Starting at 1.22kg/2.70lbs.

### KEYBOARD

Backlit keyboard with new UC functions for F9-F11

### COLORS

Black

# optional services

### PREMIER SUPPORT

Bypass phone menus and scripted troubleshooting to access advanced-level technicians with the expertise needed to quickly diagnose and solve problems. Get a consistent point of contact within Lenovo to ensure that your case resolution is professionally managed from start to finish.<sup>1,2</sup>

### WARRANTY UPGRADES

Onsite Service maximizes PC uptime and productivity by providing convenient, fast repair service at your place. In addition, with Tech Install CRU service the installation of all internal Customer Replaceable Unit (CRU) parts will be done on your behalf by a trained technician.<sup>1</sup>

### WARRANTY EXTENSIONS

This fixed-term, fixed-cost service and Sealed Battery warranty extensions helps you accurately budget for PC expenses, protect your investment, and lower the cost of ownership over time.<sup>1</sup>

### ACCIDENTAL DAMAGE PROTECTION

Protect your investment from operational or structural damage caused by common accidents like drops, spills, or electrical surges. This protection plan helps with predictable budgeting, minimizes unexpected repair costs and provides significant savings relative to the cost of non-covered repairs.<sup>1, 2</sup>

### KEEP YOUR DRIVE

Retain your drive if it should happen to fail, giving you the peace of mind of knowing that your valuable data is secure. <sup>1, 2</sup>

<sup>1</sup> Up to 5 years total duration

<sup>2</sup> May not be available in all regions

# accessories



### THINKPAD PROFESSIONAL 15.6-INCH BACKPACK

PN: 4X40Q26383

This sleek, lightweight backpack protects and organizes your mobile office with separate workstation and accessories storage pockets, zipped water bottle pockets, a trolley strap, and a comfort handle. Premium, weather-resistant materials protect from everyday wear and tear.



### LENOVO 65W USB-C AC TRAVEL ADAPTER

PN: Varies by country

This ultra-portable and lightweight AC travel adapter kit offers USB Type-C charging options for smartphones and laptops. It features a detachable, twist-and-lock design and includes plugs for US, AU, EU, and UK travel.



### LENOVO POWERED USB-C TRAVEL HUB

PN: 4X90S92381

One-stop travel docking is here. Sleek and compact, the Lenovo Powered USB-C Travel Hub features six connection options for charging, displays, and more, as well as a slim, portable design with cable management.

©2020 Lenovo. All rights reserved. Depending on many factors such as the processing capability of peripheral devices, file attributes, and other factors related to system configuration and operating environments, the actual transfer rate using the various USB connectors on this device will vary and is typically slower than the data rates as defined by the respective USB specifications: - 5 Gbit/s for USB 3.1 Gen1; 10 Gbit/s for USB 3.1 Gen2 & 20 Gbit/s for USB 3.2. These products are available while supplies last. Prices shown are subject to change without notice. For any questions concerning price, please contact your Lenovo Account Executive. Lenovo is not responsible for photographic or typographic errors. Warranty: For a copy of applicable warranties, write to: Warranty Information, 500 Park Offices Drive, RTP, NC 27709, Attn: Dept. ZPYA/B600. Lenovo makes no representation or warranty regarding third-party products or services. Trademarks: Lenovo, the Lenovo logo, Rescue and Recovery, ThinkPad, ThinkCentre, ThinkStation, ThinkVantage, and ThinkVision are trademarks or registered trademarks of Lenovo. Microsoft, Windows, and Vista are registered trademarks of Microsoft Corporation. Intel, the Intel logo, Intel Inside, Intel Core, and Core Inside are trademarks of Intel Corporation in the U.S. and/or other countries. Other company, product and service names may be trademarks or service marks of others.

Lenovo