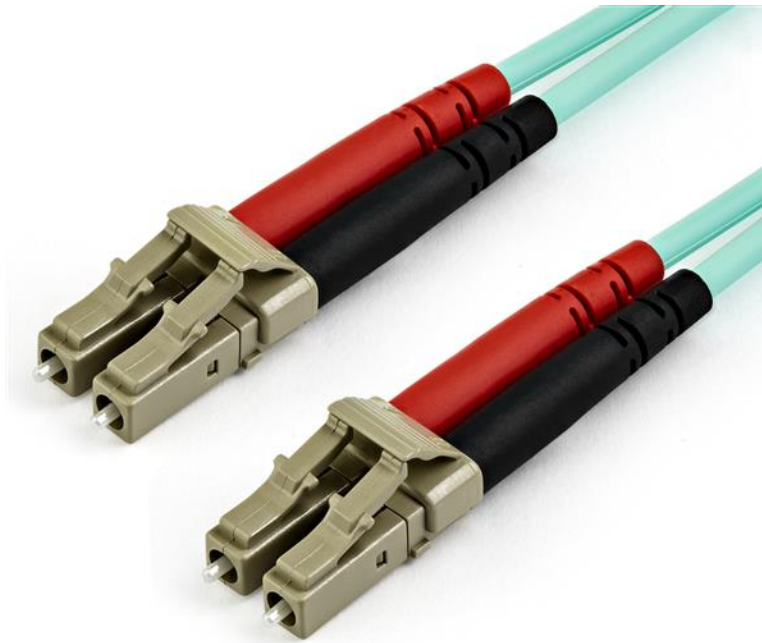


# 7 m OM3 LC to LC Multimode Duplex Fiber Optic Patch Cable

Product ID: A50FBLCLC7



This OM3 LC to LC Multimode Duplex Fiber Optic Patch cable features 50/125 micron fiber and supports high-bandwidth data transmission over a 10 Gigabit Ethernet connection.

## Built for Performance

With laser-optimized multimode fiber (LOMMF), the patch cable is ideal for connecting 850 nm Vertical Cavity Surface Emitting Laser (VCSEL) and LED sources. The high-speed connectivity on the aqua fiber-optic cable provides a high-bandwidth solution for your data centers or high-density applications.

## Reliable Connection

Each OM3 fiber cable is individually tested and certified to be within acceptable optical insertion loss limits for guaranteed compatibility and 100% reliability.

## **High-Quality Construction**

Housed in a LSZH (Low-Smoke, Zero-Halogen) flame retardant jacket, this fiber-optic cable ensures minimal smoke, toxicity and corrosion when exposed to high sources of heat, or in the event of a fire. It's the best choice for a wide range of environments, including industrial settings, central offices and schools, as well as residential settings where building codes are a consideration.

A50FBLCLC7 is backed by a StarTech.com lifetime warranty and free lifetime technical support.

### Certifications, Reports and Compatibility



### Applications

- Use in 10 Gigabit high-speed network environments
- High-speed connectivity for high-density applications

### Features

- Reliable connectivity for your 10Gb Ethernet applications
- Provides high bandwidth with laser-optimized multimode fiber (LOMMF)
- Easily connect to your VCSEL and LED sources
- Certified to ensure attenuation loss meets industry standards
- Built with a Low-Smoke, Zero-Halogen flame retardant jacket for a safe connection

<b>Hardware</b>	Warranty	Lifetime
	Fiber Size	50/125
	Fire Rating	LSZH Rated (Low Smoke Zero Halogen)
<b>Performance</b>	Cable Rating	10Gbps / 40Gbps / 100Gbps
	Fiber Classification	OM3
	Maximum Data Transfer Rate	100Gbps
	Type	Multi Mode
	Wavelength	850nm
<b>Connector(s)</b>	Connector A	1 - Fiber Optic LC Duplex Male
	Connector B	1 - Fiber Optic LC Duplex Male
<b>Environmental</b>	Humidity	0~90% RH
	Operating Temperature	-20°C to 60°C (-4°F to 140°F)
	Storage Temperature	-20°C to 60°C (-4°F to 140°F)
<b>Physical Characteristics</b>	Cable Length	23 ft [7 m]
	Color	Aqua
	Product Height	0.4 in [10 mm]
	Product Length	23 ft [7 m]
	Product Width	0.5 in [13 mm]
	Weight of Product	3.4 oz [96 g]
<b>Packaging Information</b>	Package Height	0.8 in [20 mm]
	Package Length	7.9 in [20 cm]
	Package Width	8.5 in [21.5 cm]
	Shipping (Package) Weight	3.7 oz [106 g]
<b>What's in the Box</b>	Included in Package	1 - 7 m Fiber Patch Cable

Product appearance and specifications are subject to change without notice.