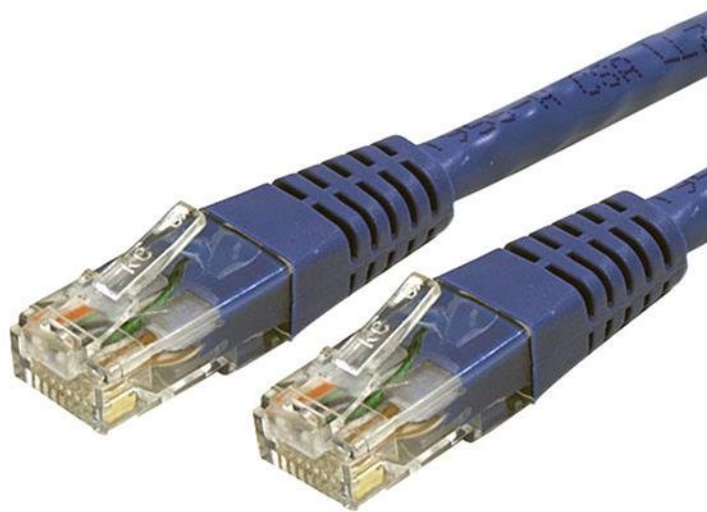


25ft CAT6 Ethernet Cable - Blue CAT 6 Gigabit Ethernet Wire -650MHz 100W PoE++ RJ45 UTP Molded Category 6 Network/Patch Cord w/Strain Relief/Fluke Tested UL/TIA Certified

Product ID: C6PATCH25BL



The C6PATCH25BL Cat 6 Patch Cable (25 ft) meets or exceeds all Category 6 cable specifications to ensure reliable Gigabit network connections, and features a durable blue PVC jacket that enables you to color code your network cable runs as needed.

To ensure long-lasting performance, this high quality Cat 6 patch cable features molded PVC strain relief that prevents the RJ45 connector termination points from bending at sharp angles - reducing the risk of cable damage, which could decrease network performance.

Constructed of only top quality materials, this Gigabit Patch Cable delivers reliable performance and is backed by our Lifetime Warranty.

100% Copper - a better value

StarTech.com Cat6 cables are manufactured using high-quality copper conductors. While many cable manufacturers offer a "cheaper" cable, based on a copper-coated aluminum core, we make no compromises on quality to ensure you receive top value and performance for your network cable investment.

24 AWG Wire

This Cat6 cable is constructed with 24 gauge copper wire, to support a broad range of Ethernet applications such as Power over Ethernet (PoE). Because we use a high quality copper wire, our cables easily sustain the power required for Power over Ethernet applications, whereas the inferior quality offered by copper-coated aluminum cables may be subject to insufficient power delivery, heat buildup, equipment damage and potentially, fire.

50-micron Gold Connectors

This molded patch cable offers high quality connectors comprised of 50-micron gold, to deliver optimum conductivity while eliminating signal loss due to oxidation or corrosion.

Certifications, Reports and Compatibility



Applications

- Designed for use with Gigabit networks
- Patches from hub to distribution panel
- Connects workstation to wall outlet
- Extend the reach of your Gigabit network devices by 25 ft

Features

- ETL Verified
- HIGH PERFORMANCE CAT6 ETHERNET CABLE: 100% copper for error-free Multi Gigabit 1/2.5/5Gbps connections; 10Gbps up to 160'; Fluke patch cord tested to comply w/ANSI/TIA-568-2.D Category 6; ETL Verified
- POE SUPPORT: 24 AWG stranded copper conductors & UL rated wiring supports up to 100W for PoE devices like VOIP phone & security systems; IEEE 802.3bt & DTE power compliance reduces cable heating
- QUALITY CONSTRUCTION: ETL & UL certified wire; 50-micron gold-plated connectors prevent rust/corrosion to avoid costly network downtime; High quality PVC jacket resists bending or fraying damage
- EASY INSTALLATION: 25 foot molded patch cord is easy to connect into high density panels with many cables; Compatible w/Cat5e; Available w/Snagless boots for easy wiring conduit installation
- SPECS: Length: 25ft (7.6m) | Color: Blue | 650 MHz Rated | Structure: 4 Pair UTP | RJ45 | Jacket: PVC | Wire Gauge: 24 AWG Copper | Wiring: ANSI/T568B | ETL Verified | Warranty: Lifetime

Hardware	Warranty	Lifetime
	Cable Jacket Material	PVC - Polyvinyl Chloride
	Cable Type	Molded
	Fire Rating	CMG Rated (General Purpose)
	Number of Conductors	4 Pair UTP
	Wiring Standard	TIA/EIA-568-B.1-2001 T568B
Performance	Cable Rating	CAT6 - 650 MHz
Connector(s)	Connector A	1 - RJ-45 Male
	Connector B	1 - RJ-45 Male
Physical Characteristics	Cable Length	25 ft [7.6 m]
	Color	Blue
	Conductor Type	Stranded Copper
	Product Length	25 ft [7.6 m]
	Weight of Product	10.9 oz [308 g]
	Wire Gauge	24 AWG
Packaging Information	Package Height	1.3 in [32 mm]
	Package Length	8.7 in [22 cm]
	Package Width	7.9 in [20 cm]
	Shipping (Package) Weight	11.2 oz [317 g]
What's in the Box	Included in Package	1 - 25 ft. Cat6 Patch Cable - Blue

Product appearance and specifications are subject to change without notice.