


Please read the following instructions before operating your sharpener.



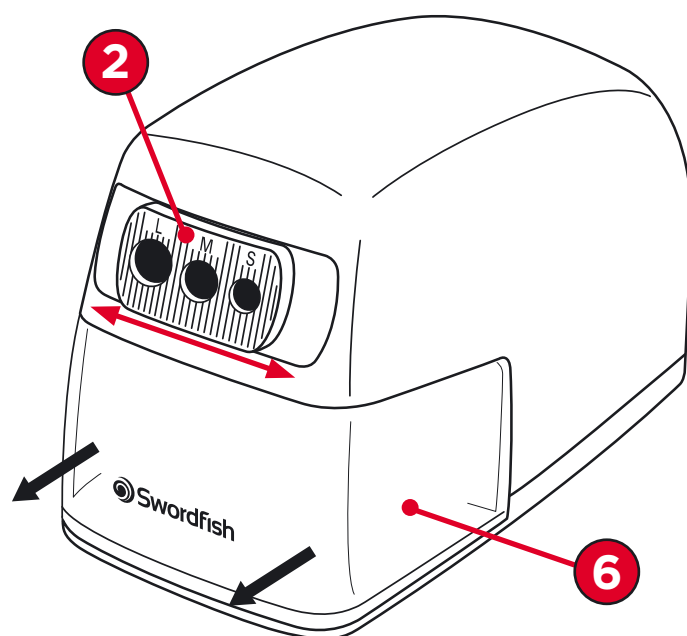
Trio Electric Pencil Sharpener

Operating Instructions

● **To be used under adult supervision only.**

| Model | Product Code | Replacement Blade Code | Compatible Pencil Size(s) |
|-------|---|------------------------|---------------------------|
| Trio |  40906 | 40023 | 8-10.5mm |

- 1 Place the sharpener on a flat surface close to an easily accessible socket outlet. Plug the sharpener into the wall socket using the power cable provided.
- 2 Slide the pencil size cover to select the correct pencil diameter:
S - for standard 8mm pencils (slide to the left)
M - for larger 9-10mm pencils (slide to the middle)
L - for large 10.5mm pencils (slide to the right)
- 3 Insert the pencil centrally, holding it firmly but pressing only lightly.
- 4 The sharpener will automatically stop sharpening when the pencil is sharp, the motor will continue running until the pencil is removed.
- 5 Remove the pencil.
- 6 Empty the shavings tray if necessary by holding it over a waste bin and sliding it out horizontally from the main sharpener unit.



Cleaning

Regular cleaning will ensure that your sharpener operates efficiently.

- Use a small brush (e.g. paintbrush or toothbrush) to clean the cutting blade. Never use metal objects as this may damage the cutting blade.
- The shavings tray can be removed and cleaned with water only. Never clean the main sharpener unit with water or use solvents such as alcohol or thinner.

Coloured Pencils

- Sharpening coloured pencils causes wax to build up on the sharpener blade.
- We recommend alternating between coloured and graphite pencils as graphite will help to clean the blade.
- If excessive build up occurs then clean the blade as per the instructions above.

Safety Switch

- This sharpener is fitted with a safety switch ensuring that it cannot be operated unless the shavings tray is fully in place.

Thermal cut-out system

- This sharpener is suitable for intermittent use and should not be used continuously for more than 12 minutes. Long continual use will cause the thermal cut-out system to activate. This is a safety feature and the sharpener will require a cool down period of approx. 20-30 minutes before it is ready for use.

Replacement Blades

- As with all sharpeners, frequent use will eventually blunt the sharpener blade. For replacement blades, please contact your supplier quoting product code **40023**.