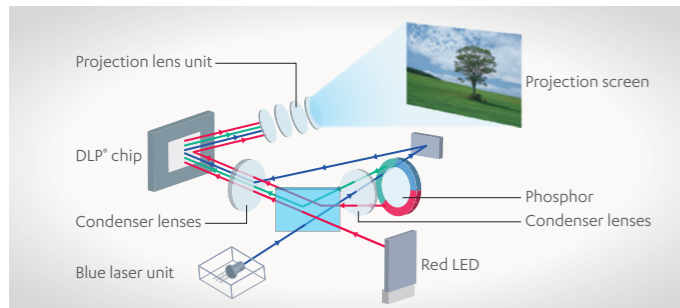


## Hardware Features

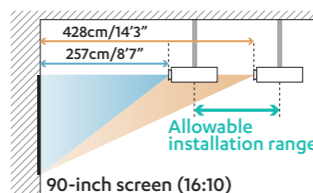
### R-Hybrid Light Source



CASIO's unique optical engine combines a laser with an LED. It achieves high luminance by using light from a blue laser converted by the phosphor and the color wheel to complement the red light conventionally projected by red LEDs. The resulting light source realizes high brightness of 4000 lumens.

### 1.7x Optical Zoom

A 1.7x optical zoom makes projector installation easy by eliminating the need to change the positions of existing metal fittings. The operating range may vary with the projector.



### CASIO Green Technology

#### - 20,000-hour Operation

The light source has a lifetime of approx. 20,000 hours.

#### - Low Cost, Low Maintenance

The cost and labor of lamp and filter replacement are vastly reduced.

#### - Instant ON/OFF

Projection can begin immediately when the power is turned ON, with no cool down necessary after it is turned OFF again.

#### - Mercury Free

The light source achieves reduced environmental impact by eliminating the use of hazardous mercury.

### Advanced Cooling Structure

CASIO's unique technology realizes 4000 lumens high brightness, noise-reduction, compact design, and dust resistant structure at the same time.

### DICOM Simulation

The newly developed color mode is ideal for displaying medical documents, such as CT and MRI scans. It employs gradated settings resembling the DICOM standard to present sharp, clear images in fine detail.

\* These projectors are not medical devices and should not be used to interpret CT or MRI scans or to conduct diagnoses.

# CASIO®

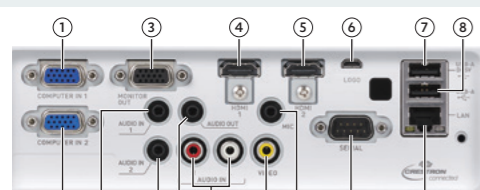
**LampFree**  
CASIO Green Technology

# 1-Click Connection For the Smart Classroom

## Superior Series XJ-S400



### Interfaces



- 1 Computer terminal 1
- 2 Computer terminal 2\*
- 3 Monitor output terminal\*
- 4 HDMI terminal 1
- 5 HDMI terminal 2
- 6 USB terminal (Micro-B)
- 7 USB terminal (Type-A) 1
- 8 USB terminal (Type-A) 2\*
- 9 Audio input terminal 1
- 10 Audio input terminal 2\*
- 11 Audio output terminal
- 12 Audio input terminal (RCA)
- 13 Video input terminal (RCA)
- 14 Mic terminal\*
- 15 Control terminal (RS-232C)
- 16 LAN terminal\*

\* Compatible models: XJ-S400UN / S400WN

### Specifications

	XJ-S400UN	XJ-S400U	XJ-S400WN	XJ-S400W
Brightness*1	4000 lumens			
Display system	DLP* chip x1, DLP* system			
Display chip	WUXGA 0.67 inches (Aspect ratio: 16:10) 2,304,000 pixels (1920 dots x 1200 dots)		WXGA 0.65 inches (Aspect ratio: 16:10) 1,024,000 pixels (1280 dots x 800 dots)	
Contrast ratio	20,000:1			
Vertical keystone correction	+30° (automatic), ±30° (manual)			
Projection lens	1.7X manual zoom, manual focus, F=2.33-3.03 / f=19.5-32.3			
Projected image size	30-300 inches			
Projection distance	60-inch 1.64-2.78 meters (5.4-9.1 feet)		1.72-2.92 meters (5.7-9.6 feet)	
100-inch	2.80-4.70 meters (9.2-15.4 feet)		2.94-4.94 meters (9.7-16.2 feet)	
Minimum projection distance	0.77 meters (2.5 feet)		0.81 meters (2.7 feet)	
Light source (estimated lifetime*2)	Laser & LED (up to 20,000 hours)			
Color reproduction	Full color (up to 1.07 billion colors)			
Scanning frequencies	Horizontal: 15-91 kHz, Vertical: 50-85 Hz			
Computer input	Digital input terminal: HDMI type A x2			
Analog input terminal	mini D-Sub 15 pin x2	mini D-Sub 15 pin x1	mini D-Sub 15 pin x2	mini D-Sub 15 pin x1
Monitor out terminal	mini D-Sub 15 pin x1	—	mini D-Sub 15 pin x1	—
Video input	Analog input terminal: Component: YCbCr/YPbPr (used for both analog computer input and component input), Analog video: Composite (RCA) x1			
Audio Input	3.5 mm stereo mini jack x2, RCA x1 [R/L], 3.5 mm monaural mini jack (for Mic.) x1*3	3.5 mm stereo mini jack x1, RCA x1 [R/L]	3.5 mm stereo mini jack x2, RCA x1 [R/L], 3.5 mm monaural mini jack (for Mic.) x1*3	3.5 mm stereo mini jack x1, RCA x1 [R/L]
Output	3.5 mm stereo mini jack x1 (variable audio)			
Speaker	16W x1, monaural			
Other terminals	USB host: USB 2.0 Type-A x2			
USB power supply	DC 5V (Shared with USB host terminal)	DC 5V (Dedicated power supply terminal)	DC 5V (Shared with USB host terminal)	DC 5V USB Type-A x1 (Dedicated power supply terminal)
USB function	USB 1.1 Micro-B x1*4			
Control (serial)	RS-232C (D-Sub 9 pin) x1			
LAN	RJ-45 x1	—	RJ-45 x1	—
Wireless LAN support	IEEE 802.11 b/g/n*5 (requires separately available YW-41 wireless LAN adaptor)	—	IEEE 802.11 b/g/n*5 (requires separately available YW-41 wireless LAN adaptor)	—
Power requirements	AC 100-240V, 50/60Hz			
Approximate dimensions (W x H x D)	357 x 124 x 337 mm (not including projections)			
Security compatibility	Kensington Compatible, Security Bar, Power On Password			
Included accessories*6	Remote control, Power cord, Warranty card			

\*1 When "Bright" is selected for the Light Control OFF mode.

\*2 Lifetime not guaranteed.

\*3 Plug-in power microphones are not supported.

\*4 For firmware updates and logo data registration.

\*5 With connection of wireless LAN adaptor to USB-A (Host) port.

\*6 User and Network manuals available for downloading from the CASIO website after the products are launched.



### PC/Smart Device Projection Applications

	App	OS	Remarks
For PC	C-Connection	Windows Mac OS Chrome OS	• Download the app from the CASIO Website. * The Chrome OS version will be available in June.
For smart devices	MirrorOp Presenter	Android iOS	• Available from Google Play for Android and from the App Store for iOS.
	MirrorOp Receiver	Android iOS	• PC Remote is operated on MirrorOp Receiver. * MirrorOp is a product of Barco, Inc.

\* For the corresponding OS version, please see CASIO's website.

### Option

Wireless LAN adaptor [YW-41]  
for Network models (XJ-S400UN / S400WN)

### Safety Precautions

Read the instruction manual carefully before using these products to ensure safe use.

**Warning:** Do not use a power source voltage, connection cord or AC adapter other than those specified. Doing so could result in fire or electric shock.

**Caution:** Do not position these products in a place where they might come into contact with water, moisture, steam, dust or oily smoke or in a high-temperature location. Doing so could result in fire, electric shock or equipment failure.

- Contact a nearby dealer for inquiries concerning this catalog. If you have questions your dealer cannot answer, inquire at the contact address shown below.
- Be sure you receive your warranty with the date of purchase, dealer name and other required items filled in at the time of purchase.
- The specifications, designs, etc., presented in this catalog are subject to change without notice. The color tones of the products shown may differ from those of the actual products due to printing.
- Screen images shown are superimposed graphics.
- Product prices do not include installation fees, shipping charges, incidental work costs, etc.
- Be sure to set up the equipment properly according to the directions in the instruction manual. Failure to make connections properly or attempts to make alterations may result in accidents. CASIO can accept no responsibility under such circumstances.
- The figures for brightness are averages for the products as a whole at the time of shipment and are in compliance with the ISO21118:2012 Data Projector Specifications. The measurement methods and conditions are based on Appendix B.
- Refer to the setup guide for the classifications of laser products.
- DLP and the DLP Medallion and Logo are registered trademarks of Texas Instruments of the United States.
- Windows is a registered trademark of Microsoft Corporation in the United States and other countries.
- Mac OS is a registered trademark of Apple Inc. in the United States and other countries.
- App Store is a service mark of Apple Inc., registered in the United States and other countries.
- Chrome OS, Google Play and Android are registered trademarks of Google Inc.
- MirrorOp is a registered trademark of Barco Inc.
- Other company and product names in this catalog are trademarks or registered trademarks of the respective companies.

[https://web.casio-intl.com/projector/educational\\_solutions/](https://web.casio-intl.com/projector/educational_solutions/)



CASIO COMPUTER CO., LTD.  
Tokyo, Japan

BS1901-005001A Printed in Japan

**Educational  
Solutions**

# Begin Classes Quickly and Easily! 1-Click Connection Projectors

With the advent of IT education, which integrates digital contents and the Internet into the classroom, instructors need projectors that facilitate easier, more efficient teaching styles.

CASIO is preparing to support the IT classroom of the future.  
We call these efforts our Educational Solutions (ES) concept.

We began by interviewing teachers and IT managers at over 40,000 schools where CASIO projectors were in use to determine the ideal performance characteristics of tomorrow's IT classroom projectors.

We reduced restrictions on the classroom layout by introducing wireless operation and replacing the complicated setting procedures with quick, easy One Click Connection.

We also installed a smartphone/tablet-based Moderator function and a PC / Projector remote function that enables free control of projection operation of the teacher or students from anywhere in the classroom.

To simplify operation and expedite smooth classroom instruction.

To enable flexible teaching styles that encourage greater student participation.

To coordinate lessons more closely with students  
and strengthen interactive communication.

After many long years,  
these educational challenges have finally been overcome.

Making IT lessons smarter and more efficient.

CASIO is redefining the IT classroom of the future.



Superior Series  
**XJ-S400** 4000 lumens

WUXGA model	WXGA model
• XJ-S400UN • XJ-S400U [Network model]	• XJ-S400WN • XJ-S400W [Network model]

To be Released from May 2019

**Educational  
Solutions**



Special Solution Movie Now Available!

[https://web.casio-intl.com/projector/educational\\_solutions/](https://web.casio-intl.com/projector/educational_solutions/)



## Supporting IT Classes from Start to Finish!

### Preparation

One Click Connection simplifies the projection startup process.  
With quick and easy wireless projection to reduce the time and effort spent on preparation, classes can start immediately.



### During Class

With the Moderator function, the students' PC connection status and projection operations are managed firsthand by the teacher. For teachers, lessons are closely coordinated with students to assure clear, easy communication of the contents.



### End of Class

Auto Projection OFF makes projector operations unnecessary when classes are over. This simplifies the tidying up process and leaves the projector ready for prompt use by the next teacher.



# Classes can be conducted smoothly and freely, with students deepening their understanding through active interaction among all the class members.

## Preparation

### One Click Connection



Just clicking on the One Click Connection ("OCC" hereinafter) icon set up for each classroom creates a wireless connection with the projector and initiates projection. The time and effort spent on activities such as establishing cable connections, switching inputs and making wireless settings are significantly reduced, so that classes can begin right away.

\* Compatible models: XJ-S400UN / S400WN



No cable connection required.

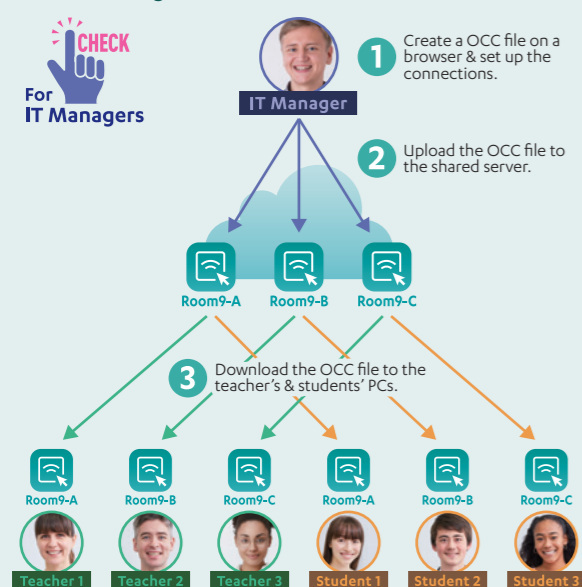


No wireless setting required.



No input content switching required.

### Connection Setting on Browser [for IT Managers]



Creation of the OCC file and the projector connection settings can be conducted on the IT manager's web browser. This spares IT managers the trouble of constructing a network environment.

\* The C-Connection network projection app must be installed on every PC beforehand.

## During Class

### Moderator Function



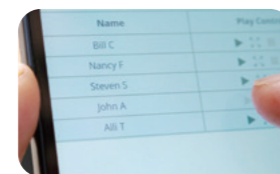
This function makes it possible to manage the projection operations of students' PCs collectively by smartphone or tablet. The teacher can select any student's PC from anywhere in the classroom and project the relevant contents onto the screen immediately. This is a practical way of enhancing teaching efficiency and increasing student participation through activities such as presentation of assignments. A maximum of 40 devices can be connected simultaneously including teacher's devices.

\* Compatible models: XJ-S400UN / S400WN

### For Presentations



When students click the OCC icon to indicate completion of a classroom assignment, their user name is displayed in a list on the teacher's smart device screen. This makes it easy for the teacher to tell which students have completed the assignment and to select students to present their solutions while still circulating the room.



Selecting a student from teacher's smart device.



Selecting student's PC screen



Projecting the student's work onto the screen

The teacher can also select the next student easily on a smart device without reconnecting with the student's PC.

### For Discussions



The ability to select the screens you want to show on the spot and project them immediately saves the time and effort required to consolidate materials on the teacher's PC each time a new solution is presented.

## During Class

### PC & Projector Remote



Remote control of the PC and projector by smartphone or tablet enables teachers to project the screens they want to show from anywhere in the classroom. This enables them to coordinate their lessons directly with students' input and needs.

\* Compatible models: XJ-S400UN / S400WN

### PC Remote

Teachers can switch among teaching materials and turn pages while walking around the classroom, without returning to the podium each time.

\* Installation of the C-Connection network projection app in the PC and the MirrorOp Receiver app in the smartphone or tablet is required.

### Projector Remote

When a document camera, DVD player or other device is connected to the projector, remote switching among input terminals can be conducted as appropriate.

## End of Class

### Auto Projection OFF



Stops the app.

Projection screen turns off

Next teacher clicks icons of app. to restart projection.

Pressing the stop button on the C-Connection network projection app when the class ends removes the projected image from the screen while maintaining the network connection status. One Click Connection is all it takes to start the next class immediately. Because there is no need to turn the power ON/OFF before and after every class, preparation and tidying up are trouble free.

\* A new projection session can be started using the same signal within 20 minutes of Auto Projection OFF.  
\* Wired use is also possible by plugging in and unplugging a cable.

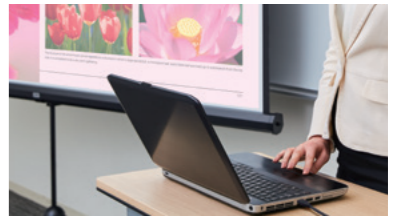
### Auto Power OFF After 20 Minutes [for IT Managers]



After 20 minutes in the Auto Projection OFF mode, the projector's main power supply is turned off automatically. This prevents it from being left on accidentally, and reduces the pressure on IT managers to confirm the projector status after school.

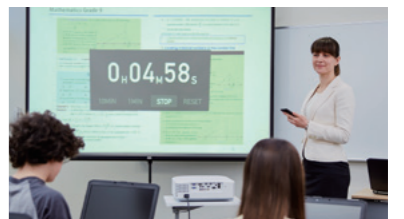
## Other Features

### Auto Input Search



When the power is turned ON after the cable is connected, the projector searches for the input signal and initiates projection automatically.

### Countdown Timer



The ability to display a large timer in the center of the screen comes in handy for various classroom activities, such as informing students of assignment and examination time limits.

### Templates



Nine built-in templates comprising frequently used borders and grids are available for use in class. Original images can also be registered.

\* Original image registration is restricted to Network models.

### Mirror Mode



Images can be rotated horizontally, a useful capability for studying movement and form.