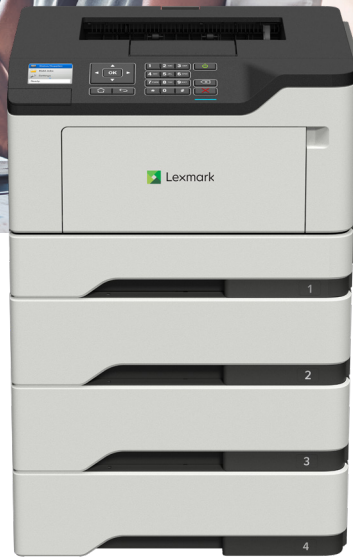




B2546dw

Productivity. Reliability. Value.



B2546dw with optional trays



We back this product with a guarantee that covers repair actions including the cost of spare parts in the first four years.* The guarantee also offers you free 24-hour self-help online support and access to technical support by phone during working hours.



*Offer applies if the product is registered within 90 days from the date of purchase. Supplies and/or consumable parts, such as fuser or transfer unit, are excluded. Please refer to the detailed terms and conditions available at lexmark.com/myguarantee.

Lexmark B2546dw

A dual-core processor, 512 MB of memory and a print speed of up to 44 pages per minute*, means the Lexmark B2546dw delivers solid performance. An Input of 350 sheets expands to 2,000 sheets, whilst superior print quality, enhanced security and built-in durability are just part of what makes it such a great value.



Get more done

- ▶ Tackle your printing workload with the power of a 1-GHz dual-core processor and 512 MB of memory.
- ▶ Get up to 44-page-per-minute printing.
- ▶ Easily configure and monitor vital system information via the 6 cm colour LCD.
- ▶ Use media sizes from A6 to legal via the paper tray, plus smaller media and envelopes via the 100-sheet multipurpose feeder.

Ready when you are

- ▶ Long-life fuser and imaging components extend uptime.
- ▶ Unison™ Toner replacement cartridges deliver up to 10,000 pages** of high-quality printing.
- ▶ A maximum input capacity of 2,000 pages means fewer interruptions.
- ▶ The durable metal frame is designed for longevity.

Robust, built-in security

- ▶ Lexmark's full-spectrum security architecture helps keep your information safe - on the document, the device, over the network, and everywhere in between.
- ▶ A range of embedded features harden the device against attacks.
- ▶ Standard Confidential Print feature helps ensure output security via simple PIN.
- ▶ Keypoint Intelligence - Buyers Lab honoured Lexmark with a prestigious BLI PaceSetter award for Document Imaging Security***.



Built for planet earth

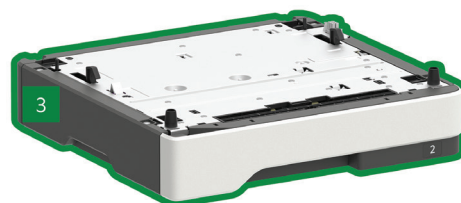
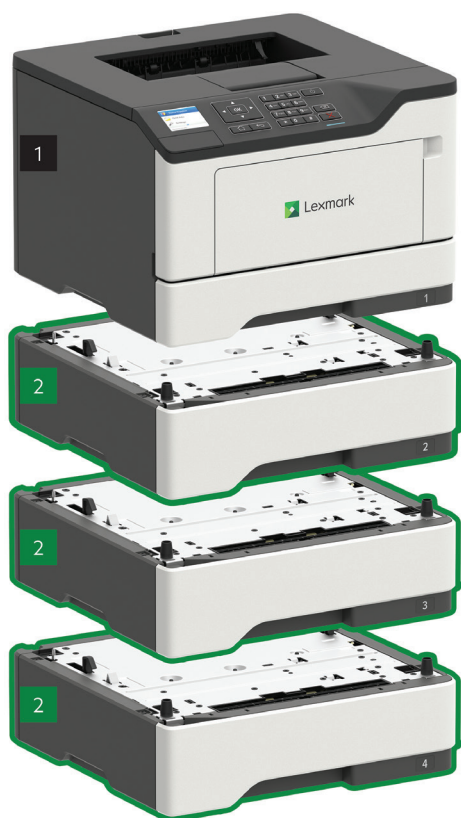
- ▶ Energy management features reduce power consumption in active use or sleep mode.
- ▶ Standard two-sided printing saves paper.
- ▶ Use of post-consumer recycled content in manufacturing saves natural resources.
- ▶ Device is rated EPEAT® Silver and ENERGY STAR® certified.
- ▶ Recycle cartridges through the award-winning Lexmark Cartridge Collection Programme (LCCP).

*Print and copy speeds measured in accordance with ISO/IEC 24734 and ISO/IEC 24735 respectively (ESAT). For more information see: www.lexmark.com/ISOspeeds.

**Average standard page yield value declared in accordance with ISO/IEC 19752.

***Award based on Western Europe data

Lexmark B2546dw



- 1 B2546dw with 6 cm colour display
10.2 x 15.7 x 14.7 inches
260 x 399 x 374 mm
- 2 550-sheet tray
5 x 15.7 x 14.7 inches
126 x 389 x 374 mm

- 3 250-sheet tray
3.7 x 15.7 x 14.7 inches
95 x 389 x 374 mm

-  Standard
-  Optional

Supports up to three optional trays.

© 2018 Lexmark. All rights reserved.

Lexmark, the Lexmark logo and Unison are trademarks of Lexmark International, Inc., registered in the United States and/or other countries. AirPrint and the AirPrint Logo are trademarks of Apple, Inc. ENERGY STAR® is a U.S. registered mark. EPEAT® is a trademark of EPEAT, Inc. in the United States and other countries. Google Cloud Print is a trademark of Google, Inc. MOPRIA®, the Mopria® Logo™ and the Mopria® Alliance logos are trademarks, service marks, and certification marks of Mopria Alliance, Inc. in the United States and other countries. All other trademarks are the property of their respective owners.

This product includes software developed by the OpenSSL Project for use in the Open SSL Toolkit (<http://www.openssl.org/>).

Product specifications

Lexmark B2546dw

Printing

| | |
|--|--|
| Display | 6 cm (2.4-inch) Colour LCD display |
| Print Speed: Up to ⁶ | Black: 44 ppm |
| Time to First Page: As fast as | Black: 6.0 seconds |
| Print Resolution | Black: 1200 Image Quality, 1200 x 1200 dpi, 2400 Image Quality, 300 x 300 dpi, 600 x 600 dpi |
| Memory | standard: 512 MB / maximum: 512 MB |
| Hard Disk | Not Available |
| Recommended Monthly Page Volume ² | 2,000 - 15,000 Pages |
| Maximum Monthly Duty Cycle: Up to ³ | 120,000 pages per month |

Supplies⁷

| | |
|---|---|
| Laser Cartridge Yields (up to) ¹ | 3,000-page Cartridge, 6,000-page High Yield Cartridge, 10,000-page Extra High Yield Cartridge |
| Imaging Unit Estimated Yield: Up to | 60,000 pages, based on 3 average letter/A4-size pages per print job and ~ 5% coverage |
| Cartridge(s) Shipping with Product ¹ | 3,000-page Starter Return Programme Toner Cartridge |

Paper Handling

| | |
|------------------------------|---|
| Included Paper Handling | 250-Sheet Input, 100-Sheet Multipurpose Feeder, 150-Sheet Output Bin, Integrated Duplex |
| Optional Paper Handling | 250-Sheet Tray, 550-Sheet Tray, 550-Sheet Lockable Tray |
| Paper Input Capacity: Up to | Standard: 350 pages 75 gsm bond / Maximum: 2,000 pages 75 gsm bond |
| Paper Output Capacity: Up to | Standard: 150 pages 75 gsm bond / Maximum: 150 pages 75 gsm bond |
| Media Types Supported | Card Stock, Envelopes, Paper Labels, Plain Paper, Transparencies, Refer to the Paper & Speciality Media Guide |
| Media Sizes Supported | 10 Envelope, 7 3/4 Envelope, 9 Envelope, A4, A5, DL Envelope, Executive, Folio, JIS-B5, Legal, Letter, Statement, Universal, Oficio, A6 |

General Information⁴

| | |
|---------------------------------|--|
| Standard Ports | USB 2.0 Specification Hi-Speed Certified (Type B), Gigabit Ethernet (10/100/1000), 802.11b/g/n Wireless |
| Noise Level: Operating | Print: 56 dBA |
| Specified Operating Environment | Temperature: 16 to 32°C (60 to 90°F), Humidity: 8 to 80% Relative Humidity, Altitude: 0 - 5,000 Metres (16,404 Feet) |
| Product Guarantee ⁸ | 4-year guarantee (upon registration) |
| Size (mm - H x W x D) / Weight | 260 x 399 x 374 mm / 14.1 kg |
| Part Number | 36SC549 |

All information in this brochure is subject to change without notice. Lexmark is not liable for any errors or omissions.

¹Average standard page yield value declared in accordance with ISO/IEC 19752. ²"Recommended Monthly Page Volume" is a range of pages that helps customers evaluate Lexmark's product offerings based on the average number of pages customers plan to print on the device each month. Lexmark recommends that the number of pages per month be within the stated range for optimum device performance, based on factors including: supplies replacement intervals, paper loading intervals, speed, and typical customer usage. ³"Maximum Monthly Duty Cycle" is defined as the maximum number of pages a device could deliver in a month using a multishift operation. This metric provides a comparison of robustness in relation to other Lexmark printers and MFPs. ⁴Printers are sold subject to certain license/agreement conditions. See www.lexmark.com/printerlicense for details. ⁵Actual Yield may vary based on other factors such as device speed, paper size and feed orientation, toner coverage, tray source, percentage of black-only printing and average print job complexity. ⁶Print and copy speeds measured in accordance with ISO/IEC 24734 and ISO/IEC 24735 respectively (ESAT). For more information see: www.lexmark.com/ISOspeeds. ⁷Product functions only with replacement cartridges designed for use in a specific geographical region. See www.lexmark.com/regions for more details. ⁸Offer applies if the product is registered within 90 days from the date of purchase. Supplies and/or consumable parts, such as fuser or transfer unit, are excluded. Please refer to the detailed terms and conditions available at lexmark.com/myguarantee.