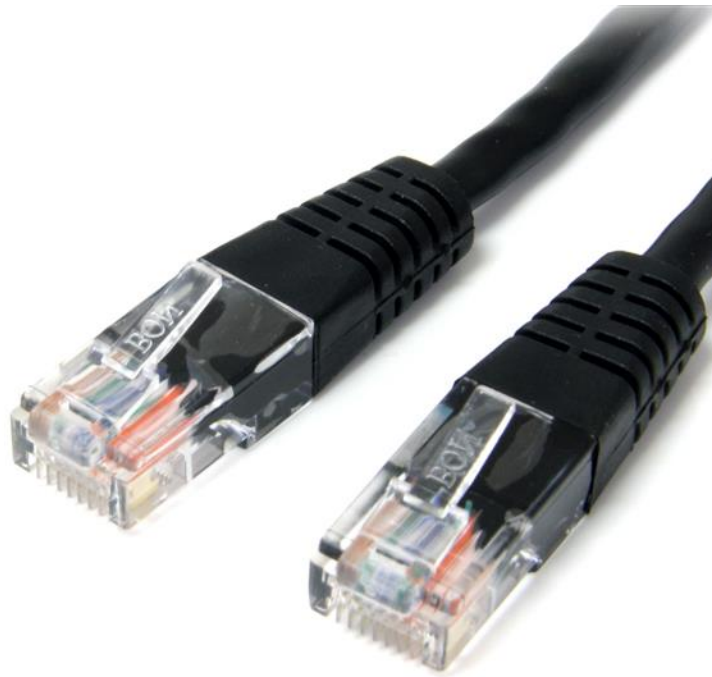


15 ft Cat5e Black Molded RJ45 UTP Cat 5e Patch Cable - 15ft Patch Cord

Product ID: M45PATCH15BK



The M45PAT15BK Cat5e Patch Cable (15 ft) meets or exceeds all Cat 5e specifications to ensure reliable Ethernet network connections, and features a durable black PVC jacket that enables you to color code your network cable runs as needed.

To ensure long-lasting performance, this high quality Cat5e patch cable features molded PVC strain relief that prevents the RJ45 connector termination points from bending at sharp angles - reducing the risk of cable damage, which could decrease network performance.

Constructed of only top quality materials, this Cat5e Patch Cord delivers reliable performance and is backed by our Lifetime Warranty.

100% Copper - a better value

StarTech.com Cat5e cables are manufactured using high-quality copper conductors. While many cable manufacturers offer a "cheaper" cable, based on a copper-coated aluminum core, we make no compromises on quality to ensure you receive top value and performance for your network cable investment.

24 AWG Wire

This Cat 5e cable is constructed with 24 gauge copper wire, to support a broad range of Ethernet applications such as Power over Ethernet (PoE). Because we use a high quality copper wire, our cables easily sustain the power required for Power over Ethernet applications, whereas the inferior quality offered by copper-coated aluminum cables may be subject to insufficient power delivery, heat buildup, equipment damage and potentially, fire.

50-micron Gold Connectors

This molded patch cable offers high quality connectors comprised of 50-micron gold, to deliver optimum conductivity while eliminating signal loss due to oxidation or corrosion.

Certifications, Reports and Compatibility



Applications

- Designed for use with Fast Ethernet networks
- Patches from hub to distribution panel
- Connects workstation to wall outlet
- Extend the reach of your Ethernet network devices by 15 ft

Features

- Molded RJ45 connectors
- Carefully constructed and tested, to keep Near End Crosstalk (NEXT) well within acceptable limits
- Colored hoods for departmental color coding
- Constructed with top quality components
- High quality 24 AWG copper wire

Hardware	Warranty	Lifetime
	Cable Jacket Type	PVC - Polyvinyl Chloride
	Cable Type	Molded
	Fire Rating	CMG Rated (General Purpose)
	Number of Conductors	4 Pair UTP
	Wiring Standard	TIA/EIA-568-B.1-2001 T568B
Performance	Cable Rating	CAT5e - 350 MHz
Connector(s)	Connector A	1 - RJ-45 Male
	Connector B	1 - RJ-45 Male
Physical Characteristics	Cable Length	15 ft [4.6 m]
	Color	Black
	Conductor Type	Stranded Copper
	Product Length	15 ft [4.6 m]
	Weight of Product	5.6 oz [158 g]
	Wire Gauge	24 AWG
Packaging Information	Package Height	1.2 in [30 mm]
	Package Length	9.1 in [23 cm]
	Package Width	9.1 in [23 cm]
	Shipping (Package) Weight	6.4 oz [182 g]
What's in the Box	Included in Package	1 - 15 Ft Black Molded Cat5 Patch Cable

Product appearance and specifications are subject to change without notice.