

# Mission: digital transformation

The starting point for  
document capture

FUJITSU Image Scanner fi-7030

The fi-7030, like its siblings, offers much more than pure, high quality scanning technology that delivers speed and versatility for single purpose scanning. The fi-7030 opens up the opportunity for enterprises and public administration offices to start the journey to digital transformation and presents a professional entry point to information capture.

## Technology – quality – solution

- Instant document capture
- Compact & robust
- Reliable durability
- Fast processing: 27 ppm / 54 ipm full speed

Based on industry leading scanning technology, the fi-7030 defines a complete capture solution that is centred around how the user will want to:

- Easily digitise paper documents
- Classify and verify content
- Validate files
- Release to defined target systems and processes

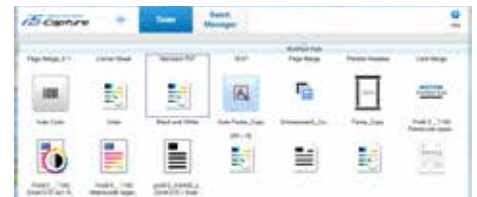
Using the fi-7030 solution all of this can be accomplished in an integrated but interruptible logical workflow routine that allows for collecting several documents into a single case file on different occasions. For more instant document capture, these routines can even be triggered from the scanner's front panel, capturing documents and placing them in pre-defined locations without any interruption.



## PaperStream Capture 1.5

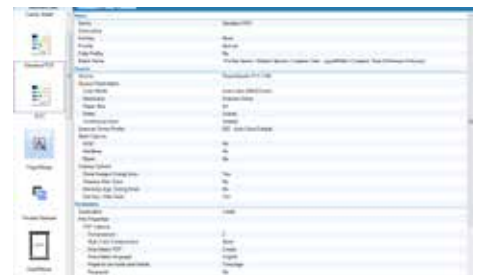
On screen, the user interface is provided by PaperStream Capture 1.5, a newly developed high performance document capture application that enables the fi-7030 to serve as an out-of-the-box document capture solution. As is typical for any Fujitsu fi-Series solution, the users or the admin staff stay in full control of how much of the hardware and software technology should be made available.

PaperStream Capture is easy to operate because it features a simplified user interface similar to those of mobile apps optimised for touch screens. First time users will appreciate its intuitiveness.



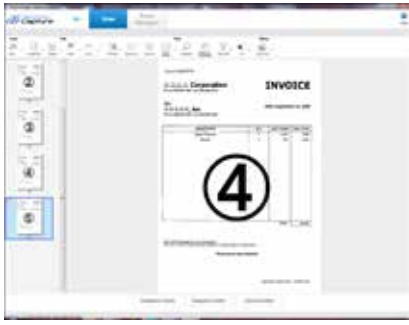
PaperStream Capture is based on the concept of "One Click Capture", reducing the required number of screen touches or clicks. It effectively streamlines repetitive operations, preventing operational errors.

Where business critical document related processes require a higher level of user interaction, PaperStream Capture 1.5 conveniently provides information listings and step-by-step workflows.

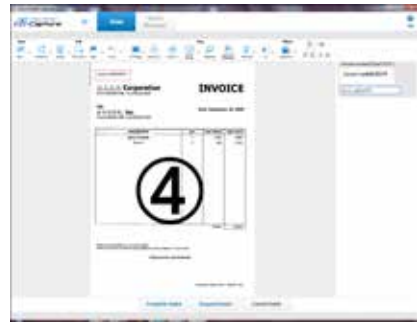


shaping tomorrow with you

'Browse View' clearly shows the captured content:



'Page View' reveals any additionally extracted information, such as invoice numbers, in an editable field:



Creating and maintaining PaperStream profiles and capturing routines directly within PaperStream Capture 1.5 is intuitively easy:



Capture jobs in progress are displayed in a sorted list for higher visibility of processing status:



# Specifications

Model		fi-7030
Supported operating systems		See <a href="http://emea.fujitsu.com/fiscannerfaqs/">http://emea.fujitsu.com/fiscannerfaqs/</a> for further information
Scanner type		Automatic Document Feeder (ADF)
Scanning modes		Simplex / Duplex, Colour / Greyscale / Mono
Image sensor type		Colour CIS (Contact Image Sensor) x 2 (front x 1, back x 1)
Light source		3 Colour LED (Red / Green / Blue) x 2 (front x 1, back x 1)
Multifeed detection		Ultrasonic multifeed detection sensor x 1, Paper detection sensor x 1
Document size	Maximum	216 x 355.6 mm
	Minimum	50.8 x 50.8 mm
	Long page scanning <sup>1</sup>	216 x 5,588 mm
Recommended paper weight		40 to 209 g/m <sup>2</sup> / supports 127 to 209 g/m <sup>2</sup> for A8 size ID card types, Embossed card 0.76 mm or less
Scanning speed (A4 Portrait) <sup>2</sup>		Simplex: 27 ppm (200/300 dpi), Duplex: 54 ipm (200/300 dpi)
	Colour <sup>3</sup> / Greyscale <sup>3</sup> / Mono <sup>4</sup>	
Paper chute capacity (A4 Portrait) <sup>5</sup>		50 sheets (A4: 80 g/m <sup>2</sup> )
Background colours		White
Optical resolution		600 dpi
Output resolution <sup>6</sup>	Colour / Greyscale / Mono	50 to 600 dpi (adjustable by 1 dpi increments), 1,200 dpi (driver) <sup>7</sup>
Output format		Colour: 24 bit, Greyscale: 8 bit, Mono: 1 bit
Internal video processing		1,024 levels (10-bit)
Interface / Connector shape		USB 2.0 / USB 1.1 / B type
Image processing functions		Deskew, Cropping, Image emphasis, Error diffusion, Dither, Black & White Method, Dynamic threshold (iDTC), Static threshold, Advanced DTC, SDTC, De-Screen, Dropout colour (Red / Green / Blue / White / None / Saturation / Custom), Automatic colour detection, Multi image output, Blank page detection, sRGB output, Split image, Front/Back Merging
Power requirements		AC 100 to 240 V ±10%
Power consumption		Operating mode: 17 W or less / Sleep mode: 1.1 W or less / Auto standby (off) mode: 0.15 W or less
Operating environment		Temperature: 5 to 35°C / Relative humidity: 20 to 80% (Non-condensing)
Dimensions (W x D x H) <sup>8</sup> / Weight		290 x 146 x 130 mm / 2.9 kg
Included software / drivers		PaperStream IP (TWAIN / TWAIN x64 / ISIS), PaperStream Capture, Software Operation Panel, Error Recovery Guide, ScanSnap Manager for fi Series <sup>9</sup> , Scan to Microsoft SharePoint <sup>9</sup> , ABBYY FineReader for ScanSnap <sup>TM9</sup> , Scanner Central Admin Agent
Environmental compliance		ENERGY STAR <sup>®</sup> and RoHS <sup>10</sup>
Included items		ADF paper chute, AC cable, AC adapter, USB cable, Setup DVD-ROM

<sup>1</sup> The fi-7030 is capable of scanning documents that exceed A4 in length: Documents up to 5,588 mm in length can be scanned at resolutions up to 200 dpi.  
<sup>2</sup> Actual scanning speeds are affected by data transmission and software processing times.  
<sup>3</sup> JPEG compressed figures.  
<sup>4</sup> TIFF G4 compressed figures.  
<sup>5</sup> Maximum capacity varies, depending upon paper weight.  
<sup>6</sup> Maximum output resolutions may vary, depending upon the size of the area being scanned and whether the scanner is scanning in simple or duplex.  
<sup>7</sup> Scanning limitations due to scanning mode, document size and available memory may occur when scanning at high resolutions (600 dpi or higher).  
<sup>8</sup> Excluding the ADF paper chute and Stacker.  
<sup>9</sup> The software can be downloaded from the website designated in the Setup DVD-ROM.  
<sup>10</sup> PFU LIMITED, a Fujitsu company, has determined that this product meets RoHS requirements (2011/65/EU)



All names, manufacturer names, brand and product designations are subject to special trademark rights and are manufacturer's trademarks and/or registered brands of their respective owners. All indications are non-binding. Technical data is subject to change without prior notification.



**PFU (EMEA) Limited**  
 Hayes Park Central  
 Hayes End Road, Hayes  
 Middlesex UB4 8FE  
 United Kingdom  
 Tel: +44 (0)20 8573 4444

**PFU (EMEA) Limited**  
 Frankfurter Ring 211  
 80807 Munich  
 Germany  
 Tel: +49 (0)89 32378 0

**PFU (EMEA) Limited**  
 Viale Monza, 259  
 20126 Milano (MI)  
 Italy  
 Tel: +39 02 26294 1

**PFU (EMEA) Limited**  
 Camino Cerro de los Gamos, 1  
 28224 Pozuelo de Alarcón  
 Madrid  
 Spain  
 Tel: +34 91 784 90 00

<http://emea.fujitsu.com/scanners>

