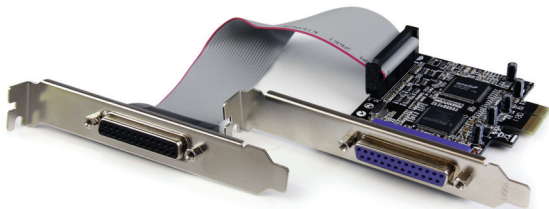


2 Port PCI Express Parallel Adapter Card - SPP/EPP/ECP/PS2

PEX2PECP2



*actual product may vary from photos

DE: Bedienungsanleitung - de.startech.com

FR: Guide de l'utilisateur - fr.startech.com

ES: Guía del usuario - es.startech.com

IT: Guida per l'uso - it.startech.com

NL: Gebruiksaanwijzing - nl.startech.com

PT: Guia do usuário - pt.startech.com

For the most up-to-date information, please visit: www.startech.com

FCC Compliance Statement

This equipment has been tested and found to comply with the limits for a Class B digital device, pursuant to part 15 of the FCC Rules. These limits are designed to provide reasonable protection against harmful interference in a residential installation. This equipment generates, uses and can radiate radio frequency energy and, if not installed and used in accordance with the instructions, may cause harmful interference to radio communications. However, there is no guarantee that interference will not occur in a particular installation. If this equipment does cause harmful interference to radio or television reception, which can be determined by turning the equipment off and on, the user is encouraged to try to correct the interference by one or more of the following measures:

- Reorient or relocate the receiving antenna.
- Increase the separation between the equipment and receiver.
- Connect the equipment into an outlet on a circuit different from that to which the receiver is connected.
- Consult the dealer or an experienced radio/TV technician for help.

Use of Trademarks, Registered Trademarks, and other Protected Names and Symbols

This manual may make reference to trademarks, registered trademarks, and other protected names and/or symbols of third-party companies not related in any way to StarTech.com. Where they occur these references are for illustrative purposes only and do not represent an endorsement of a product or service by StarTech.com, or an endorsement of the product(s) to which this manual applies by the third-party company in question. Regardless of any direct acknowledgement elsewhere in the body of this document, StarTech.com hereby acknowledges that all trademarks, registered trademarks, service marks, and other protected names and/or symbols contained in this manual and related documents are the property of their respective holders.

Table of Contents

Introduction	1
Package Contents	1
System Requirements	1
Installation	2
Hardware Installation	2
Software Installation	2
Specifications	3
Technical Support	4
Warranty Information	4

Introduction

The PEX2PECP2 2 Port PCI Express Parallel Adapter Card - EPP/ECP/SPP/PS2 parallel card adds two IEEE 1284 parallel ports to your PC, with support for parallel data communication at speeds of up to 1.5 Mbps.

This high performance 2 Port PCI Express parallel card adds 2 DB25 parallel ports, perfect for connecting printers, scanners, memory card readers, bar code scanners and more. With the added convenience of plug-and-play capability, installing the parallel adapter card is hassle-free. The PCIe Parallel card also includes both standard and half-height/low profile mounting brackets for compatibility with almost any system form factor.

Backed by a StarTech.com Lifetime Warranty and free lifetime technical support.

Package Contents

- 1 x PCI Express Parallel Card
- 2 x Low profile brackets
- 1 x Driver CD
- 1 x Instruction Manual

System Requirements

- Windows® 8 (32/64), 7 (32/64), Vista(32/64), XP(32/64), 2000, Sever 2008 R2, 2003 (32/64) or Linux
- PC with an available PCI Express slot

Installation

WARNING! PCI Express cards, like all computer equipment, can be severely damaged by static electricity. Be sure that you are properly grounded before opening your computer case or touching your card. StarTech.com recommends that you wear an anti-static strap when installing any computer component. If an anti-static strap is unavailable, discharge yourself of any static electricity build-up by touching a large grounded metal surface (such as the computer case) for several seconds. Also be careful to handle the card by its edges and not the gold connectors.

Hardware Installation

1. Remove the computer cover. For more detailed instruction on how to perform this step, please refer to the documentation that was included with your computer at the time of purchase.
2. Locate an empty PCI Express slot, removing the metal bracket covering the accompanying empty port/socket.
3. Position the card above the open PCI Express slot, ensuring that the card is properly aligned with the slot. Insert the card firmly into the slot, distributing force evenly across the length of the board. Once inserted, secure the card into the adjoining socket (previously covered by metal bracket), using the correct size screw.
4. Replace the computer cover and re-connect all power to the computer.

Software Installation

For Windows® 2000

1. Insert the Driver CD into the CD-ROM drive.
2. When the Found New Hardware Wizard appears, click Next.
3. Select Search for a suitable driver for my device (recommended), and click Next.
4. Select CD-ROM drives, but uncheck the other boxes, then click Next.
5. Click Next.
6. Click Finish to complete the driver installation.

For Windows® XP/Server 2003

1. Insert the Driver CD into the CD-ROM drive.
2. At the Found New Hardware Wizard, select Install the software automatically (Recommended), then click Next.
3. If a Hardware Installation warning pops up indicating that the driver software has not been digitally signed, click Continue Anyway, then click Finish to complete the driver installation.

For Windows® 8, 7, Vista

1. Insert the Driver CD into the CD-ROM drive.
2. At the Found New Hardware Wizard, select Locate and install driver software (recommended).
3. Click Next to continue to setup.
4. The Add New Hardware Wizard will now ask you Would you like to install this device software?. Click Install to continue.
5. Click Close once driver installation is complete.

To Verify Windows® Driver Installation

To verify that the necessary software has been installed, Click on the Device Manager tab in System Properties, which you can be accessed through the Control Panel or by following these steps:

1. Right-click on My Computer and select Manage.
2. In the left pane of the Computer Management window, click on Device Manager.

You should see one PCI Express ECP Parallel Port ... installed under Ports (COM & LPT) item.

Specifications

Product Dimensions	121 mm (4.76 in) x 19 mm (0.75 in) x 67 mm (2.64 in)
Bus Type	PCI-Express x1
Chipset	ASIX/MosChip - MCS9865
Maximum Data Transfer Rate	Up to 1.5 Mbps
OS Support	Windows® 8 (32/64), 7 (32/64), Vista(32/64), XP(32/64), 2000, Sever 2008 R2, 2003 (32/64) and Linux

Technical Support

StarTech.com's lifetime technical support is an integral part of our commitment to provide industry-leading solutions. If you ever need help with your product, visit www.startech.com/support and access our comprehensive selection of online tools, documentation, and downloads.

For the latest drivers/software, please visit www.startech.com/downloads

Warranty Information

This product is backed by a lifetime year warranty.

In addition, StarTech.com warrants its products against defects in materials and workmanship for the periods noted, following the initial date of purchase. During this period, the products may be returned for repair, or replacement with equivalent products at our discretion. The warranty covers parts and labor costs only. StarTech.com does not warrant its products from defects or damages arising from misuse, abuse, alteration, or normal wear and tear.

Limitation of Liability

In no event shall the liability of StarTech.com Ltd. and StarTech.com USA LLP (or their officers, directors, employees or agents) for any damages (whether direct or indirect, special, punitive, incidental, consequential, or otherwise), loss of profits, loss of business, or any pecuniary loss, arising out of or related to the use of the product exceed the actual price paid for the product. Some states do not allow the exclusion or limitation of incidental or consequential damages. If such laws apply, the limitations or exclusions contained in this statement may not apply to you.

Hard-to-find made easy. At StarTech.com, that isn't a slogan. It's a promise.

StarTech.com is your one-stop source for every connectivity part you need. From the latest technology to legacy products — and all the parts that bridge the old and new — we can help you find the parts that connect your solutions.

We make it easy to locate the parts, and we quickly deliver them wherever they need to go. Just talk to one of our tech advisors or visit our website. You'll be connected to the products you need in no time.

Visit www.startech.com for complete information on all StarTech.com products and to access exclusive resources and time-saving tools.

StarTech.com is an ISO 9001 Registered manufacturer of connectivity and technology parts. StarTech.com was founded in 1985 and has operations in the United States, Canada, the United Kingdom and Taiwan servicing a worldwide market.