

Nestlé Aero Hot Choc 1kg



EAN

7613035264465

Target market(s)

GB, IE

Components

Ingredients

Fat Reduced Drinking Chocolate (42%) (Sugar, Fat Reduced Cocoa Powder, contains Cocoa Solids 25% minimum)

Skimmed Milk Powder

Glucose Syrup

Sugar

Coconut Oil

Lactose

Thickeners (E466, E415)

Natural Flavouring

Salt [Sodium Chloride, Anti-Caking Agent (E535)]

Acidity Regulator (E340)

Stabilisers (E331, E452)

Nutrition

	Per 100g	Per 100ml	Per mug (24g + 200ml of water)	% RI*
Energy	1718 kJ	169 kJ	414 kJ	
	407 kcal	40 kcal	98 kcal	5%
Fat	7.4g	0.7g	1.8g	3%
of which: saturates	6.4g	0.6g	1.5g	8%
Carbohydrate	74.4g	7.4g	17.9g	7%
of which: sugars	59.9g	5.9g	14.4g	16%
Fibre	4.4g	0.4g	1.1g	-
Protein	8.5g	0.8g	2.0g	4%
Salt	1.23g	0.12g	0.30g	5%

*Reference Intake of an average adult (8400 kJ/2000 kcal)

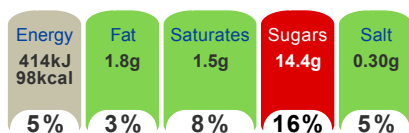
Calculated Nutrition

	per 100g	Per 100ml	Per mug (24g + 200ml of water)
Energy (kJ)	1718	169	414
Energy (kcal)	407	40	98
Fat (g)	7.4	0.7	1.8
of which saturates (g)	6.4	0.6	1.5
Carbohydrate (g)	74.4	7.4	17.9
of which sugars (g)	59.9	5.9	14.4
Fibre (g)	4.4	0.4	1.1
Protein (g)	8.5	0.8	2
Salt (g)	1.23	0.12	0.3

Front of Pack Nutrition

Per Portion

Each mug contains



of an adult's Reference Intake (RI)*

Energy per 100ml: 169kJ / 40kcal

*Reference Intake of an average adult (8400 kJ/2000 kcal)

Product Description

Brand

Aero

Manufacturer Brand

Brand - Nestlé

Features

Feel the bubbles
Low fat as prepared
98 calories per mug
No added colours or artificial flavours
No hydrogenated vegetable oil
Suitable for vegetarians

Standardised Brand

Brand - Aero

Regulated Product Name

Instant Hot Chocolate Drink Mix

Marketing

Product Marketing

The way the bubbles melt on your tongue creates a deliciously smooth hot chocolate sensation - go on, indulge yourself.

Trademark Information

Nutritional Compass®
® Reg. Trademark of Société des Produits Nestlé S.A.

Nutritional Claims

Low fat as prepared

Health & Lifestyle

Lifestyle

- Suitable for Vegetarians

Allergy Advice

Milk - Contains

Additives Other Text

No added colours or artificial flavours

Storage & Usage

Storage Type

Type

Ambient

Preparation and Usage

Place 4 heaped teaspoons in a mug..
Fill with 200ml hot, but not boiling water. Stir well to release the bubbles..
Watch the bubbles grow and enjoy your deliciously bubbly Hot Choc drink.

Storage

Store in a cool, dry place.
Best Before End: See Base

Brandbank Captured Pack Data

Pack Size

1kg e

Numeric Size

Numeric Size - 1

Recycling Info

Can - Recyclable

Lid - Plastic - Widely Recycled

Dimension

Shelf Height (mm)	Shelf Width (mm)	Shelf Depth (mm)
134	159	159

([GS1 package measurement rules](#))

Pack Type

Type - Can

Weight

Gross Weight - 1141

Unit Merchandising

Height - 134

Width - 159

Depth - 159

Recycling Other Text

Care for the environment

Recycle the main body of this can as steel

Recycle the lid as plastic

Please see underside of lid for details

Usage Count

Number of uses - Servings

41

Usage Other Text

This tin makes approx. 41 mugs

Customer Services

Return To

Contact our professionals

Tel. 0800 742 842 (UK)

00800 6378 5385 (ROI)

www.NestleProfessional.co.uk

PO Box 207,

York,

YO91 1XY,

UK.

Telephone Helpline

0800 742 842 (UK)

00800 6378 5385 (ROI)

Web Address

www.NestleProfessional.co.uk

Extended Data

Languages On Pack

- English

Description Breakdown

Functional Name - Hot Choc

